



SZABO SCANDIC

Part of Europa Biosite

Produktinformation



Forschungsprodukte & Biochemikalien



Zellkultur & Verbrauchsmaterial



Diagnostik & molekulare Diagnostik



Laborgeräte & Service

Weitere Information auf den folgenden Seiten!
See the following pages for more information!



Lieferung & Zahlungsart

siehe unsere [Liefer- und Versandbedingungen](#)

Zuschläge

- Mindermengenzuschlag
- Trockeneiszuschlag
- Gefahrgutzuschlag
- Expressversand

SZABO-SCANDIC HandelsgmbH

Quellenstraße 110, A-1100 Wien

T. +43(0)1 489 3961-0

F. +43(0)1 489 3961-7

mail@szabo-scandic.com

www.szabo-scandic.com

[linkedin.com/company/szaboscandic](https://www.linkedin.com/company/szaboscandic) 



PSMD9 purified MaxPab rabbit polyclonal antibody (D01P) MaxPab®

Catalog # : H00005715-D01P

規格 : [100 ug]

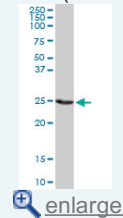
[List All](#)

Specification

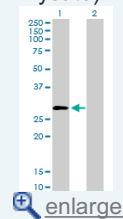
Product Description:	Rabbit polyclonal antibody raised against a full-length human PSMD9 protein.
Immunogen:	PSMD9 (NP_002804.2, 1 a.a. ~ 223 a.a) full-length human protein.
Sequence:	MSDEEARQSGGSSQAGVVTVSDVQELMRRKEEIEAQIKANYDVLESQK GIGMNEPLVDCEGYPRSDVDLYQVRTARHNIICLQNDHKAVMKQVEEALH QLHARDKEKQARDMAEAHKEAMSRKLGQSESQGPPRAFAKVNISIPGS PASIAGLQVDDEIVEFGSVNTQNFQSLHNIGSVVQHSEGGKPLNVTVIRRGE KHQLRLVPTRWAGKGLLGCNIIPLQR
Host:	Rabbit
Reactivity:	Human, Mouse
Quality Control Testing:	Antibody reactive against mammalian transfected lysate.
Storage Buffer:	In 1x PBS, pH 7.4
Storage Instruction:	Store at -20°C or lower. Aliquot to avoid repeated freezing and thawing.
MSDS:	 Download
Datasheet:	 Download

Application Image

Western Blot (Tissue lysate)

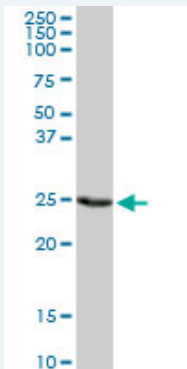


Western Blot (Transfected lysate)



Applications

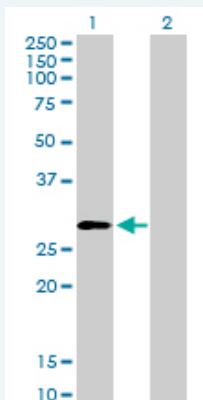
Western Blot (Tissue lysate)



PSMD9 MaxPab rabbit polyclonal antibody. Western Blot analysis of PSMD9 expression in mouse spleen.

 [Protocol Download](#)

Western Blot (Transfected lysate)



Western Blot analysis of PSMD9 expression in transfected 293T cell line (H00005715-T01) by PSMD9 MaxPab polyclonal antibody.

Lane 1: PSMD9 transfected lysate(24.70 KDa).
Lane 2: Non-transfected lysate.

 [Protocol Download](#)

Gene Information

Entrez GeneID: [5715](#)

GeneBank Accession#: [NM_002813.4](#)

Protein Accession#: [NP_002804.2](#)

Gene Name: PSMD9

Gene Alias: MGC8644,Rpn4,p27

Gene Description: proteasome (prosome, macropain) 26S subunit, non-ATPase, 9

Omim ID: [603146](#)

Gene Ontology: [Hyperlink](#)

Gene Summary: The 26S proteasome is a multicatalytic proteinase complex with a highly ordered structure composed of 2 complexes, a 20S core and a 19S regulator. The 20S core is composed of 4 rings of 28 non-identical subunits; 2 rings are composed of 7 alpha subunits and 2 rings are composed of 7 beta subunits. The 19S regulator is composed of a base, which contains 6 ATPase subunits and 2 non-ATPase subunits, and a lid, which contains up to 10 non-ATPase subunits. Proteasomes are distributed throughout eukaryotic cells at a high concentration and cleave peptides in an ATP/ubiquitin-dependent process in a non-lysosomal pathway. An essential function of a modified proteasome, the immunoproteasome, is the processing of class I MHC peptides. This gene encodes a non-ATPase subunit of the 19S regulator. [provided by RefSeq]

Other Designations: 26S proteasome regulatory subunit p27, homolog of rat Bridge 1, proteasome 26S non-ATPase regulatory subunit 9, proteasome 26S non-ATPase subunit 9

Related Disease

[Depressive Disorder](#), [Major Diabetes Mellitus](#), [Type 2 Genetic Predisposition to Disease Inflammation](#)

