



SZABO SCANDIC

Part of Europa Biosite

Produktinformation



Forschungsprodukte & Biochemikalien



Zellkultur & Verbrauchsmaterial



Diagnostik & molekulare Diagnostik



Laborgeräte & Service

Weitere Information auf den folgenden Seiten!
See the following pages for more information!



Lieferung & Zahlungsart

siehe unsere [Liefer- und Versandbedingungen](#)

Zuschläge

- Mindermengenzuschlag
- Trockeneiszuschlag
- Gefahrgutzuschlag
- Expressversand

SZABO-SCANDIC HandelsgmbH

Quellenstraße 110, A-1100 Wien

T. +43(0)1 489 3961-0

F. +43(0)1 489 3961-7

mail@szabo-scandic.com

www.szabo-scandic.com

[linkedin.com/company/szaboscandic](https://www.linkedin.com/company/szaboscandic) 

PSMD9 monoclonal antibody (M01), clone 3A4

產品編號 #: H00005715-M01

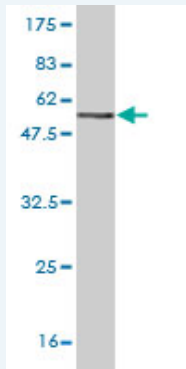
規格 : [100 ug]

[List All](#)

Specification

Product Description:	Mouse monoclonal antibody raised against a full length recombinant PSMD9.
Immunogen:	PSMD9 (AAH02383, 1 a.a. ~ 223 a.a) full-length recombinant protein with GST tag. MW of the GST tag alone is 26 KDa.
Sequence:	MSDEEARQSGGSSQAGWTVSDVQELMRRKEEIEAIKANYDVLESQK GIGMNEPLVDCEGYPRSDVDLYQVRTARHNIICLQNDHKAVMKQVEEALH QLHARDKEKQARDMAEAHKEAMSRKLGQSESQGPPRAFVNSISPGS PASIAGLQVDDEIVEFGSVNTQNFQSLHNIGSVVQHSEGKPLNVTVIRRGE KHQLRLVPTRWAGKLLGCNIPLQR
Host:	Mouse
Reactivity:	Human
Isotype:	IgG1 Kappa

Quality Control Testing: Antibody Reactive Against Recombinant Protein.



Western Blot detection against Immunogen (50.27 KDa) .

Storage Buffer: In 1x PBS, pH 7.4

Storage Instruction: Store at -20°C or lower. Aliquot to avoid repeated freezing and thawing.

MSDS: [Download](#)

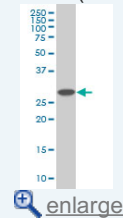
Datasheet: [Download](#)

Applications

Western Blot (Cell lysate)

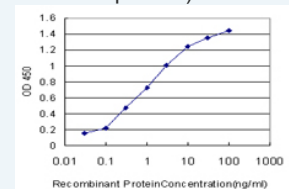
Application Image

Western Blot (Cell lysate)

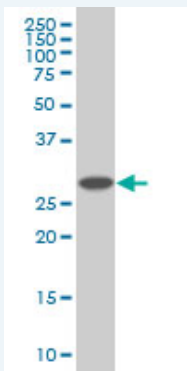


Western Blot (Recombinant protein)

Sandwich ELISA (Recombinant protein)



ELISA



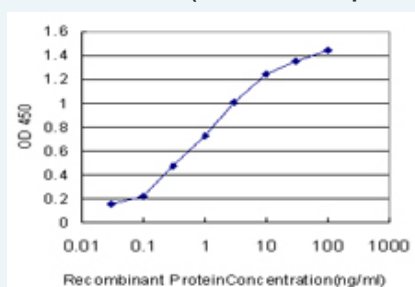
PSMD9 monoclonal antibody (M01), clone 3A4 Western Blot analysis of PSMD9 expression in HepG2 (Cat # L019V1).

[Protocol Download](#)

Western Blot (Recombinant protein)

[Protocol Download](#)

Sandwich ELISA (Recombinant protein)



Detection limit for recombinant GST tagged PSMD9 is approximately 0.03ng/ml as a capture antibody.

[Protocol Download](#)

ELISA

Gene Information

Entrez GeneID: [5715](#)

GeneBank [BC002383](#)

Accession#:

Protein [AAH02383](#)

Accession#:

Gene Name: PSMD9

Gene Alias: MGC8644,Rpn4,p27

Gene Description: proteasome (prosome, macropain) 26S subunit, non-ATPase, 9

Omim ID: [603146](#)

Gene Ontology: [Hyperlink](#)

Gene Summary: The 26S proteasome is a multicatalytic proteinase complex with a highly ordered structure composed of 2 complexes, a 20S core and a 19S regulator. The 20S core is composed of 4 rings of 28 non-identical subunits; 2 rings are composed of 7 alpha subunits and 2 rings are composed of 7 beta subunits. The 19S regulator is composed of a base, which contains 6 ATPase subunits and 2 non-ATPase subunits, and a lid, which contains up to 10 non-ATPase subunits. Proteasomes are distributed throughout eukaryotic cells at a high concentration and cleave peptides in an ATP/ubiquitin-dependent process in a non-

lysosomal pathway. An essential function of a modified proteasome, the immunoproteasome, is the processing of class I MHC peptides. This gene encodes a non-ATPase subunit of the 19S regulator. [provided by RefSeq]

Other Designations: 26S proteasome regulatory subunit p27, homolog of rat Bridge 1, proteasome 26S non-ATPase regulatory subunit 9, proteasome 26S non-ATPase subunit 9

Related Disease

[Depressive Disorder, Major](#) [Diabetes Mellitus, Type 2](#) [Genetic Predisposition to Disease Inflammation](#)

[服務條款](#) | [隱私權政策](#) | [著作及商標](#) | [網站地圖](#)

©2016 亞諾法生技股份有限公司 Abnova Corporation. 版權所有.