



# SZABO SCANDIC

Part of Europa Biosite

## Produktinformation



Forschungsprodukte & Biochemikalien



Zellkultur & Verbrauchsmaterial



Diagnostik & molekulare Diagnostik



Laborgeräte & Service

Weitere Information auf den folgenden Seiten!  
See the following pages for more information!



### Lieferung & Zahlungsart

siehe unsere [Liefer- und Versandbedingungen](#)

### Zuschläge

- Mindermengenzuschlag
- Trockeneiszuschlag
- Gefahrgutzuschlag
- Expressversand

### SZABO-SCANDIC HandelsgmbH

Quellenstraße 110, A-1100 Wien

T. +43(0)1 489 3961-0

F. +43(0)1 489 3961-7

[mail@szabo-scandic.com](mailto:mail@szabo-scandic.com)

[www.szabo-scandic.com](http://www.szabo-scandic.com)

[linkedin.com/company/szaboscandic](https://www.linkedin.com/company/szaboscandic) 

**PSMD10 MaxPab mouse polyclonal antibody (B01)** MaxPab®

Catalog # : H00005716-B01

規格 : [ 50 uL ]

[List All](#)

**Specification**

**Product Description:** Mouse polyclonal antibody raised against a full-length human PSMD10 protein.

**Immunogen:** PSMD10 (NP\_002805, 1 a.a. ~ 226 a.a) full-length human protein.

**Sequence:**  
 MEGCVSNLMVCNLAYSGKLEELKESILADKSLATRTDQDSRTALHWACS  
 AGHTEIVEFLLQLGVPVNDKDDAGWSPLHIAASAGRDEIVKALLGKGAQV  
 NAVNQNGCTPLHYAASKNRHEIAVMLLEGGANPDAKDHYEATAMHRAAA  
 KGNLKMIIHILLYKASTNIQDTEGNTPLHLACDEERVEEAKLLVSQGASIYI  
 ENKEEKTPLQVAKGGLGLILKRMVEG

**Host:** Mouse

**Reactivity:** Human

**Quality Control Testing:** Antibody reactive against mammalian transfected lysate.

**Storage Buffer:** No additive

**Storage Instruction:** Store at -20°C or lower. Aliquot to avoid repeated freezing and thawing.

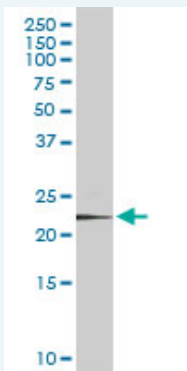
**Note:** For IHC and IF applications, antibody purification with Protein A will be needed prior to use.

**MSDS:**  [Download](#)

**Datasheet:**  [Download](#)

**Applications**

**Western Blot (Cell lysate)**



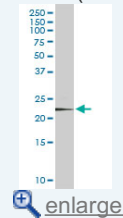
PSMD10 MaxPab polyclonal antibody. Western Blot analysis of PSMD10 expression in K-562.

 [Protocol Download](#)

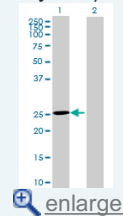
**Western Blot (Transfected lysate)**

**Application Image**

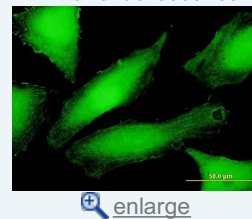
**Western Blot (Cell lysate)**

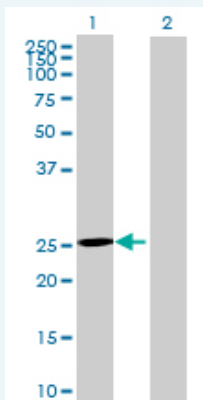


**Western Blot (Transfected lysate)**



**Immunofluorescence**



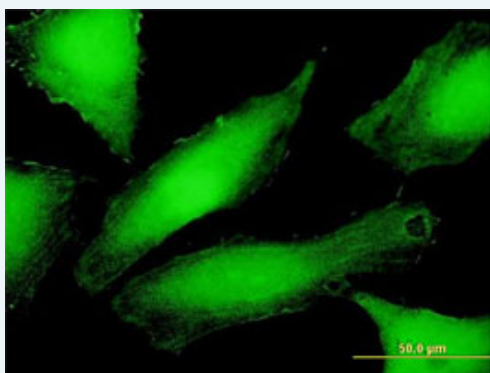


Western Blot analysis of PSMD10 expression in transfected 293T cell line ([H00005716-T01](#)) by PSMD10 MaxPab polyclonal antibody.

Lane 1: PSMD10 transfected lysate(24.86 KDa).  
Lane 2: Non-transfected lysate.

[Protocol Download](#)

### Immunofluorescence



enlarge this image

Immunofluorescence of purified MaxPab antibody to PSMD10 on HeLa cell. [antibody concentration 10 ug/ml]

[Protocol Download](#)

### Gene Information

Entrez GeneID: [5716](#)

GeneBank [NM\\_002814](#)  
Accession#:

Protein [NP\\_002805](#)  
Accession#:

Gene Name: PSMD10

Gene Alias: dJ889N15.2,p28

Gene Description: proteasome (prosome, macropain) 26S subunit, non-ATPase, 10

Omim ID: [603480](#)

Gene Ontology: [Hyperlink](#)

**Gene Summary:** The 26S proteasome is a multicatalytic proteinase complex with a highly ordered structure composed of 2 complexes, a 20S core and a 19S regulator. The 20S core is composed of 4 rings of 28 non-identical subunits; 2 rings are composed of 7 alpha subunits and 2 rings are composed of 7 beta subunits. The 19S regulator is composed of a base, which contains 6 ATPase subunits and 2 non-ATPase subunits, and a lid, which contains up to 10 non-ATPase subunits. Proteasomes are distributed throughout eukaryotic cells at a high concentration and

cleave peptides in an ATP/ubiquitin-dependent process in a non-lysosomal pathway. An essential function of a modified proteasome, the immunoproteasome, is the processing of class I MHC peptides. This gene encodes a non-ATPase subunit of the 19S regulator. Two transcripts encoding different isoforms have been described. Pseudogenes have been identified on chromosomes 3 and 20. [provided by RefSeq]

**Other Designations:** 26S proteasome non-ATPase regulatory subunit 10, 26S proteasome regulatory subunit p28, OTTHUMP00000023827, OTTHUMP00000023828, ankyrin repeat protein, gankyrin, hepatocellular carcinoma-associated protein p28-II, proteasome 26S non-ATPase subunit 10

[服務條款](#) | [隱私權政策](#) | [著作及商標](#) | [網站地圖](#)

©2016 亞諾法生技股份有限公司 Abnova Corporation. 版權所有.