



SZABO SCANDIC

Part of Europa Biosite

Produktinformation



Forschungsprodukte & Biochemikalien



Zellkultur & Verbrauchsmaterial



Diagnostik & molekulare Diagnostik



Laborgeräte & Service

Weitere Information auf den folgenden Seiten!
See the following pages for more information!



Lieferung & Zahlungsart

siehe unsere [Liefer- und Versandbedingungen](#)

Zuschläge

- Mindermengenzuschlag
- Trockeneiszuschlag
- Gefahrgutzuschlag
- Expressversand

SZABO-SCANDIC HandelsgmbH

Quellenstraße 110, A-1100 Wien

T. +43(0)1 489 3961-0

F. +43(0)1 489 3961-7

mail@szabo-scandic.com

www.szabo-scandic.com

[linkedin.com/company/szaboscandic](https://www.linkedin.com/company/szaboscandic) 

PSMD10 purified MaxPab mouse polyclonal antibody (B01P) MaxPab®

Catalog # : H00005716-B01P

規格 : [50 ug]

[List All](#)

Specification

Product Description: Mouse polyclonal antibody raised against a full-length human PSMD10 protein.

Immunogen: PSMD10 (NP_002805.1, 1 a.a. ~ 226 a.a) full-length human protein.

Sequence:
 MEGCVSNLMVCNLAYSGKLEELKESILADKSLATRTDQDSRTALHWACS
 AGHTEIVEFLLQLGVPVNDKDDAGWSPLHIAASAGRDEIVKALLGKGAQV
 NAVNQNGCTPLHYAASKNRHEIAVMLLEGGANPDAKDHYEATAMHRAAA
 KGNLKMIIHILLYKASTNIQDTEGNTPLHLACDEERVEEAKLLVSQGASIYI
 ENKEEKTPLQVAKGGLGLILKRMVEG

Host: Mouse

Reactivity: Human

Quality Control Testing: Antibody reactive against mammalian transfected lysate.

Storage Buffer: In 1x PBS, pH 7.4

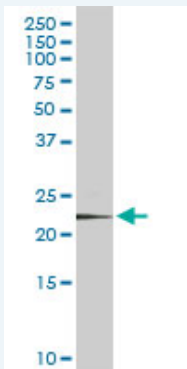
Storage Instruction: Store at -20°C or lower. Aliquot to avoid repeated freezing and thawing.

MSDS:  [Download](#)

Datasheet:  [Download](#)

Applications

Western Blot (Cell lysate)



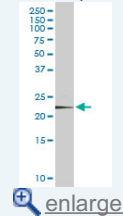
PSMD10 MaxPab polyclonal antibody. Western Blot analysis of PSMD10 expression in K-562.

 [Protocol Download](#)

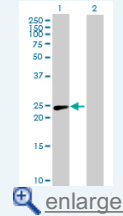
Western Blot (Transfected lysate)

Application Image

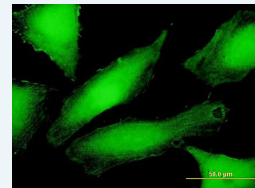
Western Blot (Cell lysate)

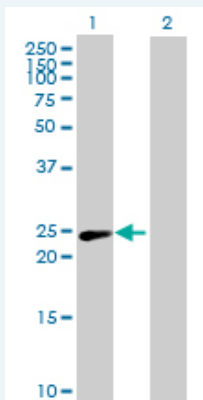


Western Blot (Transfected lysate)



Immunofluorescence



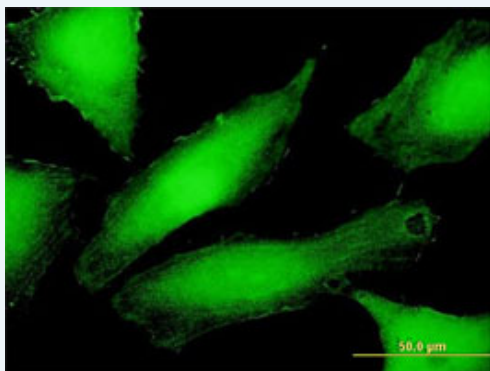


Western Blot analysis of PSMD10 expression in transfected 293T cell line ([H00005716-T02](#)) by PSMD10 MaxPab polyclonal antibody.

Lane 1: PSMD10 transfected lysate(24.86 KDa).
Lane 2: Non-transfected lysate.

[Protocol Download](#)

Immunofluorescence



enlarge this image

Immunofluorescence of purified MaxPab antibody to PSMD10 on HeLa cell. [antibody concentration 10 ug/ml]

[Protocol Download](#)

Gene Information

Entrez GeneID: [5716](#)

GeneBank [NM_002814](#)
Accession#:

Protein [NP_002805.1](#)
Accession#:

Gene Name: PSMD10

Gene Alias: dJ889N15.2,p28

Gene Description: proteasome (prosome, macropain) 26S subunit, non-ATPase, 10

Omim ID: [603480](#)

Gene Ontology: [Hyperlink](#)

Gene Summary: The 26S proteasome is a multicatalytic proteinase complex with a highly ordered structure composed of 2 complexes, a 20S core and a 19S regulator. The 20S core is composed of 4 rings of 28 non-identical subunits; 2 rings are composed of 7 alpha subunits and 2 rings are composed of 7 beta subunits. The 19S regulator is composed of a base, which contains 6 ATPase subunits and 2 non-ATPase subunits, and a lid, which contains up to 10 non-ATPase subunits. Proteasomes are distributed throughout eukaryotic cells at a high concentration and

cleave peptides in an ATP/ubiquitin-dependent process in a non-lysosomal pathway. An essential function of a modified proteasome, the immunoproteasome, is the processing of class I MHC peptides. This gene encodes a non-ATPase subunit of the 19S regulator. Two transcripts encoding different isoforms have been described. Pseudogenes have been identified on chromosomes 3 and 20. [provided by RefSeq]

Other Designations: 26S proteasome non-ATPase regulatory subunit 10, 26S proteasome regulatory subunit p28, OTTHUMP00000023827, OTTHUMP00000023828, ankyrin repeat protein, gankyrin, hepatocellular carcinoma-associated protein p28-II, proteasome 26S non-ATPase subunit 10

[服務條款](#) | [隱私權政策](#) | [著作及商標](#) | [網站地圖](#)

©2016 亞諾法生技股份有限公司 Abnova Corporation. 版權所有.