



SZABO SCANDIC

Part of Europa Biosite

Produktinformation



Forschungsprodukte & Biochemikalien



Zellkultur & Verbrauchsmaterial



Diagnostik & molekulare Diagnostik



Laborgeräte & Service

Weitere Information auf den folgenden Seiten!
See the following pages for more information!



Lieferung & Zahlungsart

siehe unsere [Liefer- und Versandbedingungen](#)

Zuschläge

- Mindermengenzuschlag
- Trockeneiszuschlag
- Gefahrgutzuschlag
- Expressversand

SZABO-SCANDIC HandelsgmbH

Quellenstraße 110, A-1100 Wien

T. +43(0)1 489 3961-0

F. +43(0)1 489 3961-7

mail@szabo-scandic.com

www.szabo-scandic.com

[linkedin.com/company/szaboscandic](https://www.linkedin.com/company/szaboscandic) 

PSMD13 purified MaxPab mouse polyclonal antibody (B02P) MaxPab®

Catalog # : H00005719-B02P

規格 : [50 ug]

[List All](#)

Specification

Product Description: Mouse polyclonal antibody raised against a full-length human PSMD13 protein.

Immunogen: PSMD13 (NP_002808, 1 a.a. ~ 376 a.a) full-length human protein.

Sequence:
 MKDVPGFLQQSQSSGPGQPAVWHRLEELYTKKLWHQLTLQVLDFVQD
 PCFAQGDGLIKLYENFISEFEHRVNPLSLVEIILHVVRQMTDPNVALTFLEK
 TREKVKSSDEAVILCKTAIGALKLNIGDLQVTKETIEDVEEMLNLPVSV
 HSRFYDLSSKYQTIQNHASYKDALRFLGCVDIKDLPVSEQQERAFITLG
 LAGLLGEGVFNFGELLMHPVLESLRNTDRQWLIDTLAYFNSGMVERFQT
 LKTAWGQQPDLAANEQQLLRKIQLLCLMEMTFTRPANHRQLTFEEIAKS
 AKITVNEVELLVMKALSVGLVKGSDIEVDKRVHMTWVQPRVLDLQQIKGM
 KDRLEFWCTDVKSMEMLVHQAHDLT

Host: Mouse

Reactivity: Human

Quality Control Testing: Antibody reactive against mammalian transfected lysate.

Storage Buffer: In 1x PBS, pH 7.4

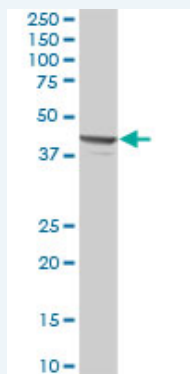
Storage Instruction: Store at -20°C or lower. Aliquot to avoid repeated freezing and thawing.

MSDS: [Download](#)

Datasheet: [Download](#)

Applications

Western Blot (Tissue lysate)



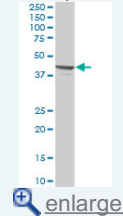
PSMD13 MaxPab polyclonal antibody. Western Blot analysis of PSMD13 expression in human liver.

[Protocol Download](#)

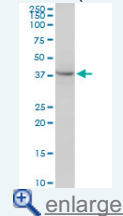
Western Blot (Cell lysate)

Application Image

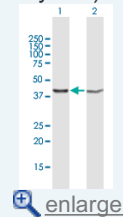
Western Blot (Tissue lysate)

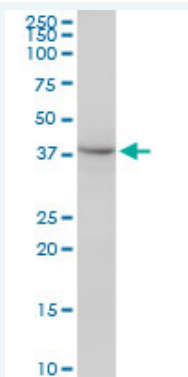


Western Blot (Cell lysate)



Western Blot (Transfected lysate)

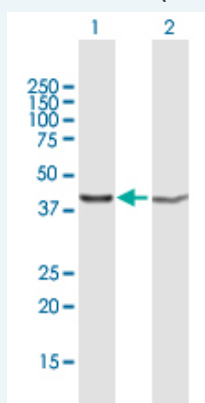




PSMD13 MaxPab polyclonal antibody. Western Blot analysis of PSMD13 expression in HeLa.

 [Protocol Download](#)


Western Blot (Transfected lysate)



Western Blot analysis of PSMD13 expression in transfected 293T cell line ([H00005719-T04](#)) by PSMD13 MaxPab polyclonal antibody.

Lane 1: PSMD13 transfected lysate(41.36 kDa).

Lane 2: Non-transfected lysate.

 [Protocol Download](#)

Gene Information

Entrez GeneID: [5719](#)

GeneBank [NM_002817](#)

Accession#:

Protein [NP_002808](#)

Accession#:

Gene Name: PSMD13

Gene Alias: HSPC027,Rpn9,S11,p40.5

Gene Description: proteasome (prosome, macropain) 26S subunit, non-ATPase, 13

Omim ID: [603481](#)

Gene Ontology: [Hyperlink](#)

Gene Summary: The 26S proteasome is a multicatalytic proteinase complex with a highly ordered structure composed of 2 complexes, a 20S core and a 19S regulator. The 20S core is composed of 4 rings of 28 non-identical subunits; 2 rings are composed of 7 alpha subunits and 2 rings are composed of 7 beta subunits. The 19S regulator is composed of a base, which contains 6 ATPase subunits and 2 non-ATPase subunits, and a lid, which contains up to 10 non-ATPase subunits. Proteasomes are distributed throughout eukaryotic cells at a high concentration and

cleave peptides in an ATP/ubiquitin-dependent process in a non-lysosomal pathway. An essential function of a modified proteasome, the immunoproteasome, is the processing of class I MHC peptides. This gene encodes a non-ATPase subunit of the 19S regulator. Two transcripts encoding different isoforms have been described. [provided by RefSeq]

Other 26S proteasome regulatory subunit S11,26S proteasome subunit
Designations: p40.5,proteasome 26S non-ATPase subunit 13

Gene Pathway

Proteasome

[服務條款](#) | [隱私權政策](#) | [著作及商標](#) | [網站地圖](#)

©2016 亞諾法生技股份有限公司 Abnova Corporation. 版權所有.