



# SZABO SCANDIC

Part of Europa Biosite

## Produktinformation



Forschungsprodukte & Biochemikalien



Zellkultur & Verbrauchsmaterial



Diagnostik & molekulare Diagnostik



Laborgeräte & Service

Weitere Information auf den folgenden Seiten!  
See the following pages for more information!



### Lieferung & Zahlungsart

siehe unsere [Liefer- und Versandbedingungen](#)

### Zuschläge

- Mindermengenzuschlag
- Trockeneiszuschlag
- Gefahrgutzuschlag
- Expressversand

### SZABO-SCANDIC HandelsgmbH

Quellenstraße 110, A-1100 Wien

T. +43(0)1 489 3961-0

F. +43(0)1 489 3961-7

[mail@szabo-scandic.com](mailto:mail@szabo-scandic.com)

[www.szabo-scandic.com](http://www.szabo-scandic.com)

[linkedin.com/company/szaboscandic](https://www.linkedin.com/company/szaboscandic) 

## PSME2 monoclonal antibody (M01), clone 3F11-1A3

Catalog # : H00005721-M01

規格 : [ 100 ug ]

[List All](#)

### Specification

**Product Description:** Mouse monoclonal antibody raised against a full length recombinant PSME2.

**Immunogen:** PSME2 (AAH19885, 1 a.a. ~ 239 a.a) full-length recombinant protein with GST tag. MW of the GST tag alone is 26 KDa.

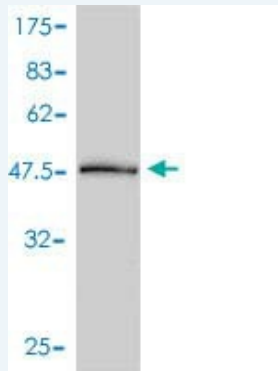
**Sequence:** MAKPCGVRLSGEARKQVEVFRQNLFQEAEEFLYRFLPQKIIYLNQLLQE  
 DSLNVADLTSLRAPLDIIPDPPPDDDEMETDKQEKKVPGCGFLPGNEK  
 VLSLLALVKPEVWTLKEKCILVITWIQHLIPKIEDGNDFGVAIQEKVLERVNA  
 VKTKVEAFQTTISKYFSEKGDVAKASKETHVMDYRALVHERDEAAYGE  
 LRAMVLDLRAFYAELYHISSNLEKIVNPKGEEKPSMY

**Host:** Mouse

**Reactivity:** Human

**Isotype:** IgG1 kappa

**Quality Control Testing:** Antibody Reactive Against Recombinant Protein.



Western Blot detection against Immunogen (52.03 KDa) .

**Storage Buffer:** In 1x PBS, pH 7.4

**Storage Instruction:** Store at -20°C or lower. Aliquot to avoid repeated freezing and thawing.

**MSDS:** [Download](#)

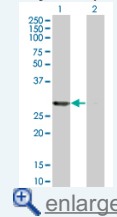
**Datasheet:** [Download](#)

### Applications

**Western Blot (Transfected lysate)**

### Application Image

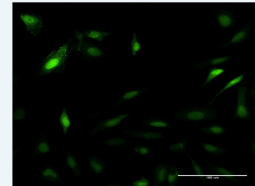
Western Blot (Transfected lysate)



[enlarge](#)

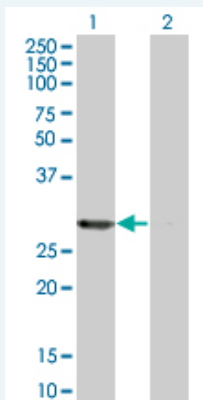
Western Blot (Recombinant protein)

Immunofluorescence



[enlarge](#)

ELISA



Western Blot analysis of PSME2 expression in transfected 293T cell line by PSME2 monoclonal antibody (M01), clone 3F11-1A3.

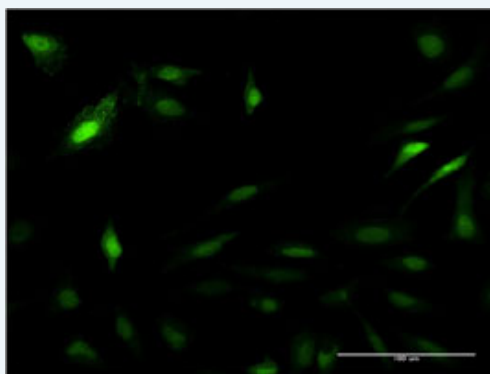
Lane 1: PSME2 transfected lysate(27.4 KDa).  
Lane 2: Non-transfected lysate.

[Protocol Download](#)

### Western Blot (Recombinant protein)

[Protocol Download](#)

### Immunofluorescence



[enlarge this image](#)

Immunofluorescence of monoclonal antibody to PSME2 on HeLa cell . [antibody concentration 10 ug/ml]

[Protocol Download](#)

### ELISA

### Gene Information

Entrez GeneID: [5721](#)

GeneBank [BC019885](#)  
Accession#:

Protein [AAH19885](#)  
Accession#:

Gene Name: PSME2

Gene Alias: PA28B,PA28beta,REGbeta

Gene Description: proteasome (prosome, macropain) activator subunit 2 (PA28 beta)

Omim ID: [602161](#)

Gene Ontology: [Hyperlink](#)

Gene Summary: The 26S proteasome is a multicatalytic proteinase complex with a highly ordered structure composed of 2 complexes, a 20S core and a 19S

regulator. The 20S core is composed of 4 rings of 28 non-identical subunits; 2 rings are composed of 7 alpha subunits and 2 rings are composed of 7 beta subunits. The 19S regulator is composed of a base, which contains 6 ATPase subunits and 2 non-ATPase subunits, and a lid, which contains up to 10 non-ATPase subunits. Proteasomes are distributed throughout eukaryotic cells at a high concentration and cleave peptides in an ATP/ubiquitin-dependent process in a non-lysosomal pathway. An essential function of a modified proteasome, the immunoproteasome, is the processing of class I MHC peptides. The immunoproteasome contains an alternate regulator, referred to as the 11S regulator or PA28, that replaces the 19S regulator. Three subunits (alpha, beta and gamma) of the 11S regulator have been identified. This gene encodes the beta subunit of the 11S regulator, one of the two 11S subunits that is induced by gamma-interferon. Three beta and three alpha subunits combine to form a heterohexameric ring. Six pseudogenes have been identified on chromosomes 4, 5, 8, 10 and 13. [provided by RefSeq]

---

**Other** 11S regulator complex beta subunit, MCP activator, 31-kD  
**Designations:** subunit, activator of multicatalytic protease subunit 2, cell migration-inducing protein 22, proteasome activator 28-beta, proteasome activator hPA28 subunit beta, proteasome activator subunit 2

---

### Gene Pathway

[Antigen processing and presentation](#) [Proteasome](#)

### Related Disease

[Disease Progression](#) [Disease Susceptibility](#) [HIV Infections](#)

---

[服務條款](#) | [隱私權政策](#) | [著作及商標](#) | [網站地圖](#)

©2016 亞諾法生技股份有限公司 Abnova Corporation. 版權所有.