



# SZABO SCANDIC

Part of Europa Biosite

## Produktinformation



Forschungsprodukte & Biochemikalien



Zellkultur & Verbrauchsmaterial



Diagnostik & molekulare Diagnostik



Laborgeräte & Service

Weitere Information auf den folgenden Seiten!  
See the following pages for more information!



### Lieferung & Zahlungsart

siehe unsere [Liefer- und Versandbedingungen](#)

### Zuschläge

- Mindermengenzuschlag
- Trockeneiszuschlag
- Gefahrgutzuschlag
- Expressversand

### SZABO-SCANDIC HandelsgmbH

Quellenstraße 110, A-1100 Wien

T. +43(0)1 489 3961-0

F. +43(0)1 489 3961-7

[mail@szabo-scandic.com](mailto:mail@szabo-scandic.com)

[www.szabo-scandic.com](http://www.szabo-scandic.com)

[linkedin.com/company/szaboscandic](https://www.linkedin.com/company/szaboscandic) 



**PSPH purified MaxPab rabbit polyclonal antibody (D01P)** MaxPab®

Catalog # : H00005723-D01P

規格 : [ 100 ug ]

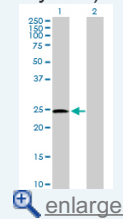
[List All](#)

**Specification**

<b>Product Description:</b>	Rabbit polyclonal antibody raised against a full-length human PSPH protein.
<b>Immunogen:</b>	PSPH (NP_004568.2, 1 a.a. ~ 225 a.a) full-length human protein.
<b>Sequence:</b>	MVSHSELRKLFFYSADAVCFDVDSTVIREEGIDELAKICGVEDAVSEMTRR AMGGAVPFKAALTERLALIQPSREQVQRLIAEQPPHLTPGIRELVSRLQE RNVQVFLISGGFRSIVEHVASKLNIPATNVFANRLKFYFNGEYAGFDETQP TAESGGKGVIKLLKEKFHFKKIIMIGDGATDMEACPPADAFIGFGGNVIR QQVKDNAKWYITDFVELLGELEE
<b>Host:</b>	Rabbit
<b>Reactivity:</b>	Human
<b>Quality Control Testing:</b>	Antibody reactive against mammalian transfected lysate.
<b>Storage Buffer:</b>	In 1x PBS, pH 7.4
<b>Storage Instruction:</b>	Store at -20°C or lower. Aliquot to avoid repeated freezing and thawing.
<b>MSDS:</b>	 <a href="#">Download</a>
<b>Datasheet:</b>	 <a href="#">Download</a>

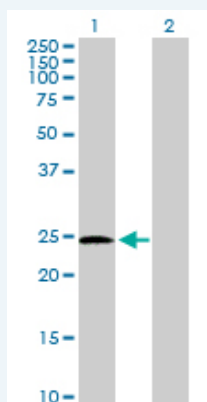
**Application Image**

Western Blot (Transfected lysate)



**Applications**

Western Blot (Transfected lysate)



Western Blot analysis of PSPH expression in transfected 293T cell line ([H00005723-T01](#)) by PSPH MaxPab polyclonal antibody.

Lane 1: PSPH transfected lysate(25.00 KDa).  
Lane 2: Non-transfected lysate.

 [Protocol Download](#)

**Gene Information**

Entrez GeneID: [5723](#)

GeneBank Accession#: [NM\\_004577.3](#)

Protein Accession#: [NP\\_004568.2](#)

Gene Name: PSPH

Gene Alias: PSP

Gene Description: phosphoserine phosphatase

Omim ID: [172480](#)

Gene Ontology: [Hyperlink](#)

**Gene Summary:** The protein encoded by this gene belongs to a subfamily of the phosphotransferases. This encoded enzyme is responsible for the third and last step in L-serine formation. It catalyzes magnesium-dependent hydrolysis of L-phosphoserine and is also involved in an exchange reaction between L-serine and L-phosphoserine. Deficiency of this protein is thought to be linked to Williams syndrome. [provided by RefSeq]

**Other Designations:** L-3-phosphoserine phosphatase,O-phosphoserine phosphohydrolase,OTTHUMP00000025059,PSPase

#### Gene Pathway

[Glycine, serine and threonine metabolism](#) [Metabolic pathways](#)

[服務條款](#) | [隱私權政策](#) | [著作及商標](#) | [網站地圖](#)

©2016 亞諾法生技股份有限公司 Abnova Corporation. 版權所有.