



# SZABO SCANDIC

Part of Europa Biosite

## Produktinformation



Forschungsprodukte & Biochemikalien



Zellkultur & Verbrauchsmaterial



Diagnostik & molekulare Diagnostik



Laborgeräte & Service

Weitere Information auf den folgenden Seiten!  
See the following pages for more information!



### Lieferung & Zahlungsart

siehe unsere [Liefer- und Versandbedingungen](#)

### Zuschläge

- Mindermengenzuschlag
- Trockeneiszuschlag
- Gefahrgutzuschlag
- Expressversand

### SZABO-SCANDIC HandelsgmbH

Quellenstraße 110, A-1100 Wien

T. +43(0)1 489 3961-0

F. +43(0)1 489 3961-7

[mail@szabo-scandic.com](mailto:mail@szabo-scandic.com)

[www.szabo-scandic.com](http://www.szabo-scandic.com)

[linkedin.com/company/szaboscandic](https://www.linkedin.com/company/szaboscandic) 

## PSPH monoclonal antibody (M01), clone 3A5

Catalog # : H00005723-M01

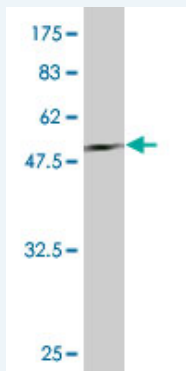
規格 : [ 50 ug ]

[List All](#)

### Specification

<b>Product Description:</b>	Mouse monoclonal antibody raised against a full length recombinant PSPH.
<b>Immunogen:</b>	PSPH (AAH63614, 1 a.a. ~ 225 a.a) full-length recombinant protein with GST tag. MW of the GST tag alone is 26 KDa.
<b>Sequence:</b>	MVSHSELRKL FYSADAVCFD VDDSTVIREEGIDELAKICGVEDAVSEMTRR AMGGAVPFKAAL TERLALIQPSREQVQRLIAEQPHLTPGIRELVSRLQE RNVQVFLISGGFRSIVEH VASKLNIPATNVFANRLKFYFNGEYAGFDETQP TAESGGKGVKIKLLKEKFHFKKIIMIGDGATDMEACPPADAFIGFGGNVIR QQVKDNAKWYITDFVELLGELEE
<b>Host:</b>	Mouse
<b>Reactivity:</b>	Human
<b>Isotype:</b>	IgG2b Kappa

**Quality Control Testing:** Antibody Reactive Against Recombinant Protein.



Western Blot detection against Immunogen (50.49 KDa) .

**Storage Buffer:** In 1x PBS, pH 7.4

**Storage Instruction:** Store at -20°C or lower. Aliquot to avoid repeated freezing and thawing.

**MSDS:** [Download](#)

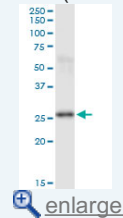
**Datasheet:** [Download](#)

### Applications

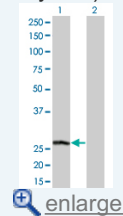
**Western Blot (Tissue lysate)**

### Application Image

Western Blot (Tissue lysate)

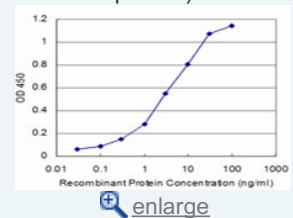


Western Blot (Transfected lysate)

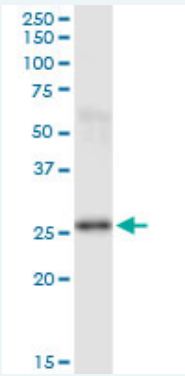


Western Blot (Recombinant protein)

Sandwich ELISA (Recombinant protein)



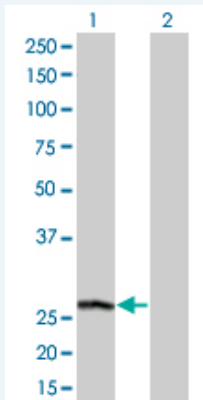
ELISA



PSPH monoclonal antibody (M01), clone 3A5. Western Blot analysis of PSPH expression in human placenta.

[Protocol Download](#)

#### Western Blot (Transfected lysate)



Western Blot analysis of PSPH expression in transfected 293T cell line by PSPH monoclonal antibody (M01), clone 3A5.

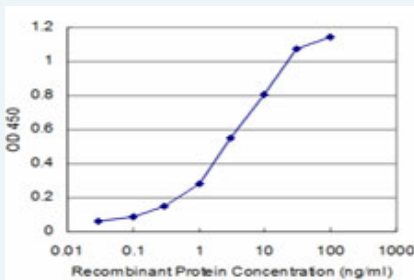
Lane 1: PSPH transfected lysate(25 KDa).  
Lane 2: Non-transfected lysate.

[Protocol Download](#)

#### Western Blot (Recombinant protein)

[Protocol Download](#)

#### Sandwich ELISA (Recombinant protein)



Detection limit for recombinant GST tagged PSPH is approximately 0.3ng/ml as a capture antibody.

[Protocol Download](#)

#### ELISA

#### Gene Information

Entrez GeneID: [5723](#)

GeneBank [BC063614](#)  
Accession#:

Protein [AAH63614](#)  
Accession#:

**Gene Name:** PSPH

**Gene Alias:** PSP

**Gene Description:** phosphoserine phosphatase

**Omim ID:** [172480](#)

**Gene Ontology:** [Hyperlink](#)

**Gene Summary:** The protein encoded by this gene belongs to a subfamily of the phosphotransferases. This encoded enzyme is responsible for the third and last step in L-serine formation. It catalyzes magnesium-dependent hydrolysis of L-phosphoserine and is also involved in an exchange reaction between L-serine and L-phosphoserine. Deficiency of this protein is thought to be linked to Williams syndrome. [provided by RefSeq]

**Other Designations:** L-3-phosphoserine phosphatase,O-phosphoserine phosphohydrolase,OTTHUMP00000025059,PSPase

### Gene Pathway

[Glycine, serine and threonine metabolism](#) [Metabolic pathways](#)

[服務條款](#) | [隱私權政策](#) | [著作及商標](#) | [網站地圖](#)

©2016 亞諾法生技股份有限公司 Abnova Corporation. 版權所有.