



SZABO SCANDIC

Part of Europa Biosite

Produktinformation



Forschungsprodukte & Biochemikalien



Zellkultur & Verbrauchsmaterial



Diagnostik & molekulare Diagnostik



Laborgeräte & Service

Weitere Information auf den folgenden Seiten!
See the following pages for more information!



Lieferung & Zahlungsart

siehe unsere [Liefer- und Versandbedingungen](#)

Zuschläge

- Mindermengenzuschlag
- Trockeneiszuschlag
- Gefahrgutzuschlag
- Expressversand

SZABO-SCANDIC HandelsgmbH

Quellenstraße 110, A-1100 Wien

T. +43(0)1 489 3961-0

F. +43(0)1 489 3961-7

mail@szabo-scandic.com

www.szabo-scandic.com

[linkedin.com/company/szaboscandic](https://www.linkedin.com/company/szaboscandic) 

PSPH monoclonal antibody (M02), clone 2G9

Catalog # : H00005723-M02

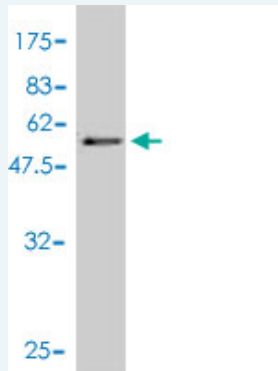
規格 : [100 ug]

[List All](#)

Specification

Product Description:	Mouse monoclonal antibody raised against a full length recombinant PSPH.
Immunogen:	PSPH (AAH63614, 1 a.a. ~ 225 a.a) full-length recombinant protein with GST tag. MW of the GST tag alone is 26 KDa.
Sequence:	MVSHSELRKL FYSADAVCFD VVDSTVIREEGIDELAKICGVEDAVSEMTRR AMGGAVPFKAALTERLALIQPSREQVQRLLAEQPPHLTPGIRELVSRLQE RNVQVFLISGGFRSIVEH VASKLNIPATNVFANRLKFYFNGEYAGFDETQP TAESGGKGVKIKLLKEKFHFKKIIMIGDGATDMEACPPADAFIGFGGNVIR QQVKDNAKWYITDFVELLGELEE
Host:	Mouse
Reactivity:	Human
Isotype:	IgG1 kappa

Quality Control Testing: Antibody Reactive Against Recombinant Protein.



Western Blot detection against Immunogen (50.49 KDa) .

Storage Buffer: In 1x PBS, pH 7.4

Storage Instruction: Store at -20°C or lower. Aliquot to avoid repeated freezing and thawing.

MSDS: [Download](#)

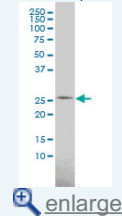
Datasheet: [Download](#)

Applications

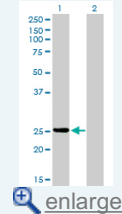
Western Blot (Cell lysate)

Application Image

Western Blot (Cell lysate)

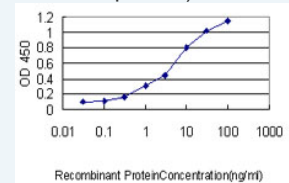


Western Blot (Transfected lysate)



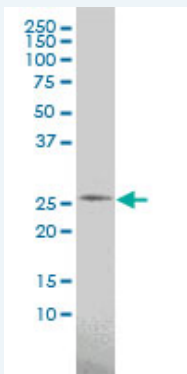
Western Blot (Recombinant protein)

Sandwich ELISA (Recombinant protein)



[enlarge](#)

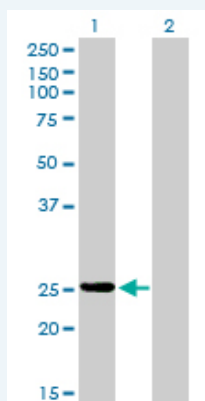
ELISA



PSPH monoclonal antibody (M02), clone 2G9 Western Blot analysis of PSPH expression in K-562 (Cat # L009V1).

[Protocol Download](#)

Western Blot (Transfected lysate)



Western Blot analysis of PSPH expression in transfected 293T cell line by PSPH monoclonal antibody (M02), clone 2G9.

Lane 1: PSPH transfected lysate(25 KDa).

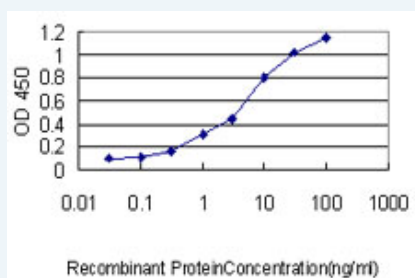
Lane 2: Non-transfected lysate.

[Protocol Download](#)

Western Blot (Recombinant protein)

[Protocol Download](#)

Sandwich ELISA (Recombinant protein)



Detection limit for recombinant GST tagged PSPH is approximately 0.1ng/ml as a capture antibody.

[Protocol Download](#)

ELISA

Gene Information

Entrez GeneID: [5723](#)

GeneBank [BC063614](#)
Accession#:

Protein [AAH63614](#)
Accession#:

Gene Name: PSPH

Gene Alias: PSP

Gene Description: phosphoserine phosphatase

Omim ID: [172480](#)

Gene Ontology: [Hyperlink](#)

Gene Summary: The protein encoded by this gene belongs to a subfamily of the phosphotransferases. This encoded enzyme is responsible for the third and last step in L-serine formation. It catalyzes magnesium-dependent hydrolysis of L-phosphoserine and is also involved in an exchange reaction between L-serine and L-phosphoserine. Deficiency of this protein is thought to be linked to Williams syndrome. [provided by RefSeq]

Other Designations: L-3-phosphoserine phosphatase,O-phosphoserine phosphohydrolase,OTTHUMP00000025059,PSPase

Gene Pathway

[Glycine, serine and threonine metabolism](#) [Metabolic pathways](#)

[服務條款](#) | [隱私權政策](#) | [著作及商標](#) | [網站地圖](#)

©2016 亞諾法生技股份有限公司 Abnova Corporation. 版權所有.