



SZABO SCANDIC

Part of Europa Biosite

Produktinformation



Forschungsprodukte & Biochemikalien



Zellkultur & Verbrauchsmaterial



Diagnostik & molekulare Diagnostik



Laborgeräte & Service

Weitere Information auf den folgenden Seiten!
See the following pages for more information!



Lieferung & Zahlungsart

siehe unsere [Liefer- und Versandbedingungen](#)

Zuschläge

- Mindermengenzuschlag
- Trockeneiszuschlag
- Gefahrgutzuschlag
- Expressversand

SZABO-SCANDIC HandelsgmbH

Quellenstraße 110, A-1100 Wien

T. +43(0)1 489 3961-0

F. +43(0)1 489 3961-7

mail@szabo-scandic.com

www.szabo-scandic.com

[linkedin.com/company/szaboscandic](https://www.linkedin.com/company/szaboscandic) 

PTCH monoclonal antibody (M10), clone 3B3

Catalog # : H00005727-M10

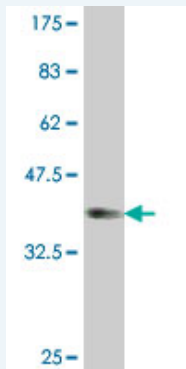
規格 : [100 ug]

[List All](#)

Specification

Product Description:	Mouse monoclonal antibody raised against a full length recombinant PTCH.
Immunogen:	PTCH (NP_000255, 651 a.a. ~ 750 a.a) full length recombinant protein with GST tag. MW of the GST tag alone is 26 KDa.
Sequence:	AHETQITMQSTVQLRTEYDPHTHVYYTTAEP RSEISVQPVTVTQDTLSC QSP ETSSTRDLLSQFSDSSLHCLEPPCTKWLSSFAEKHYAPFLLKPK AK*
Host:	Mouse
Reactivity:	Human
Isotype:	IgG2a Kappa

Quality Control Testing: Antibody Reactive Against Recombinant Protein.



Western Blot detection against Immunogen (37.11 KDa) .

Storage Buffer: In 1x PBS, pH 7.4

Storage Instruction: Store at -20°C or lower. Aliquot to avoid repeated freezing and thawing.

MSDS: [Download](#)

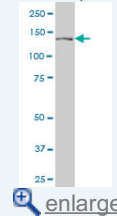
Datasheet: [Download](#)

Applications

Western Blot (Cell lysate)

Application Image

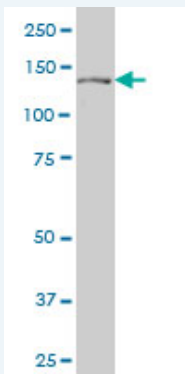
Western Blot (Cell lysate)



[enlarge](#)

Western Blot (Recombinant protein)

ELISA



PTCH monoclonal antibody (M10), clone 3B3 Western Blot analysis of PTCH expression in Y-79 (Cat # L042V1).

 [Protocol Download](#)

Western Blot (Recombinant protein)

 [Protocol Download](#)

ELISA

Gene Information

Entrez GeneID: [5727](#)

GeneBank [NM_000264](#)

Accession#:

Protein [NP_000255](#)

Accession#:

Gene Name: PTCH1

Gene Alias: BCNS,FLJ26746,FLJ42602,HPE7,NBCCS,PTC,PTC1,PTCH,PTCH11

Gene patched homolog 1 (Drosophila)

Description:

Omim ID: [109400](#), [155255](#), [601309](#), [605462](#), [610828](#)

Gene Ontology: [Hyperlink](#)

Gene Summary: This gene encodes a member of the patched gene family. The encoded protein is the receptor for sonic hedgehog, a secreted molecule implicated in the formation of embryonic structures and in tumorigenesis, as well as the desert hedgehog and indian hedgehog proteins. This gene functions as a tumor suppressor. Mutations of this gene have been associated with basal cell nevus syndrome, esophageal squamous cell carcinoma, trichoepitheliomas, transitional cell carcinomas of the bladder, as well as holoprosencephaly. Alternative splicing results in multiple transcript variants encoding different isoforms. Additional splice variants have been described, but their full length sequences and biological validity cannot be determined currently. [provided by RefSeq]

Other OTTHUMP00000021709,OTTHUMP00000021710,PTCH protein

Designations: +12b,PTCH protein +4',PTCH protein -10,patched

Gene Pathway

[Basal cell carcinoma Hedgehog signaling pathway Pathways in cancer](#)

Related Disease

[Basal Cell Nevus Syndrome](#) [Breast cancer](#) [Breast Neoplasms](#) [Carcinoma, Basal Cell](#) [Carcinoma, Ductal, Breast](#) [Carcinoma, Hepatocellular](#) [Carcinoma, Lobular](#)

[Carcinoma, Squamous Cell](#) [Cardiovascular Diseases](#) [Cleft Lip](#) [Cleft Palate](#)
[Diabetes Mellitus, Type 2](#) [Disease Susceptibility](#) [Edema](#) [Genetic Predisposition to Disease](#)
[Jaw Neoplasms](#) [Liver Neoplasms](#) [Lung Diseases](#) [Odontogenic Cysts](#)

... see more

[服務條款](#) | [隱私權政策](#) | [著作及商標](#) | [網站地圖](#)

©2016 亞諾法生技股份有限公司 Abnova Corporation. 版權所有.