



# SZABO SCANDIC

Part of Europa Biosite

## Produktinformation



Forschungsprodukte & Biochemikalien



Zellkultur & Verbrauchsmaterial



Diagnostik & molekulare Diagnostik



Laborgeräte & Service

Weitere Information auf den folgenden Seiten!  
See the following pages for more information!



### Lieferung & Zahlungsart

siehe unsere [Liefer- und Versandbedingungen](#)

### Zuschläge

- Mindermengenzuschlag
- Trockeneiszuschlag
- Gefahrgutzuschlag
- Expressversand

### SZABO-SCANDIC HandelsgmbH

Quellenstraße 110, A-1100 Wien

T. +43(0)1 489 3961-0

F. +43(0)1 489 3961-7

[mail@szabo-scandic.com](mailto:mail@szabo-scandic.com)

[www.szabo-scandic.com](http://www.szabo-scandic.com)

[linkedin.com/company/szaboscandic](https://www.linkedin.com/company/szaboscandic) 



**PTEN purified MaxPab mouse polyclonal antibody (B01P)** MaxPab®

Catalog # : H00005728-B01P

規格 : [ 50 ug ]

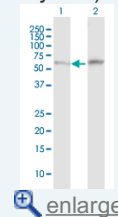
[List All](#)


**Specification**

<b>Product Description:</b>	Mouse polyclonal antibody raised against a full-length human PTEN protein.
<b>Immunogen:</b>	PTEN (AAH05821, 1 a.a. ~ 403 a.a) full-length human protein.
<b>Sequence:</b>	MTAIIKEVSRNKRRYQEDGFDLDTIYYPNIIAMGFPAERLEGVYRNIDD VVRFLDSKHKHNYKIYNLCAERHYDTAKFNCRVAQYPFEDHNPPQLELIK PFCEDLDQWLSEDDNHVAIIHCKAGKGRGTGVMICAYLLHRGKFLKAQEA LDFYGEVTRDCKKGVTPSQRRYVYYSYLLKNHLDYRPVALLFHKMMF ETIPMFSGGT CNPQFVVCQLKVKIYSSNSGPTRRREDKFMFEFPQPLPV CGDIKVEFFHKQNKMLKKDKMFHFVWNTFFIPGPEETSEKVENGSLCDQ EIDSICSIERADNDKEYLVLT LTKNDLKDANKDKANRYFSPNFVKVLYFTKT VEEPSNPEASSSTSVTPDVSDNEPDHYRSDTTDSDPENEPFDEDQHTQ ITKV
<b>Host:</b>	Mouse
<b>Reactivity:</b>	Human
<b>Quality Control Testing:</b>	Antibody reactive against mammalian transfected lysate.
<b>Storage Buffer:</b>	In 1x PBS, pH 7.4
<b>Storage Instruction:</b>	Store at -20°C or lower. Aliquot to avoid repeated freezing and thawing.
<b>MSDS:</b>	 <a href="#">Download</a>
<b>Datasheet:</b>	 <a href="#">Download</a>

**Application Image**

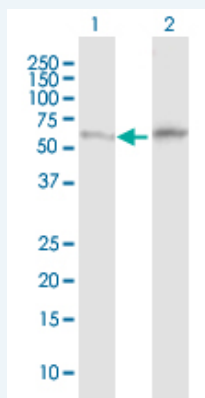
Western Blot (Transfected lysate)



 [enlarge](#)

**Applications**

**Western Blot (Transfected lysate)**



Western Blot analysis of PTEN expression in transfected 293T cell line (H00005728-T03) by PTEN MaxPab polyclonal antibody.

Lane 1: PTEN transfected lysate(44.33 KDa).  
Lane 2: Non-transfected lysate.

## Gene Information

**Entrez GeneID:** [5728](#)

**GeneBank Accession#:** [BC005821](#)

**Protein Accession#:** [AAH05821](#)

**Gene Name:** PTEN

**Gene Alias:** 10q23del,BZS,MGC11227,MHAM,MMAC1,PTEN1,TEP1

**Gene Description:** phosphatase and tensin homolog

**Omim ID:** [137800](#), [153480](#), [158350](#), [174900](#), [176807](#), [176920](#), [188470](#), [276950](#), [601728](#), [605309](#), [607174](#)

**Gene Ontology:** [Hyperlink](#)

**Gene Summary:** This gene was identified as a tumor suppressor that is mutated in a large number of cancers at high frequency. The protein encoded this gene is a phosphatidylinositol-3,4,5-trisphosphate 3-phosphatase. It contains a tensin like domain as well as a catalytic domain similar to that of the dual specificity protein tyrosine phosphatases. Unlike most of the protein tyrosine phosphatases, this protein preferentially dephosphorylates phosphoinositide substrates. It negatively regulates intracellular levels of phosphatidylinositol-3,4,5-trisphosphate in cells and functions as a tumor suppressor by negatively regulating AKT/PKB signaling pathway. [provided by RefSeq]

**Other Designations:** MMAC1 phosphatase and tensin homolog deleted on chromosome 10,OTTHUMP00000020032,mutated in multiple advanced cancers 1

## Gene Pathway

[Endometrial cancer](#) [Focal adhesion](#) [Glioma](#) [Inositol phosphate metabolism](#) [Melanoma](#) [p53 signaling pathway](#) [Pathways in cancer](#) [Phosphatidylinositol signaling system](#) [Prostate cancer](#) [Small cell lung cancer](#) [Tight junction](#)

## Related Disease

[Abnormalities, Multiple](#) [Adenocarcinoma](#) [Adenocarcinoma, Papillary](#) [Alzheimer Disease](#) [Alzheimer disease](#) [Astrocytoma](#) [Autistic Disorder](#) [Brain Neoplasms](#) [Breast cancer](#) [Breast Neoplasms](#) [Carcinoma, Endometrioid](#) [Carcinoma, Squamous Cell](#) [Cardiovascular Diseases](#) [Cleft Lip](#) [Cleft Palate](#) [Colon cancer](#) [Colonic Neoplasms](#) [Colorectal Neoplasms](#) [Craniofacial Abnormalities](#)

... see more