



SZABO SCANDIC

Part of Europa Biosite

Produktinformation



Forschungsprodukte & Biochemikalien



Zellkultur & Verbrauchsmaterial



Diagnostik & molekulare Diagnostik



Laborgeräte & Service

Weitere Information auf den folgenden Seiten!
See the following pages for more information!



Lieferung & Zahlungsart

siehe unsere [Liefer- und Versandbedingungen](#)

Zuschläge

- Mindermengenzuschlag
- Trockeneiszuschlag
- Gefahrgutzuschlag
- Expressversand

SZABO-SCANDIC HandelsgmbH

Quellenstraße 110, A-1100 Wien

T. +43(0)1 489 3961-0

F. +43(0)1 489 3961-7

mail@szabo-scandic.com

www.szabo-scandic.com

[linkedin.com/company/szaboscandic](https://www.linkedin.com/company/szaboscandic) 

PTEN monoclonal antibody (M01), clone 2G9

Catalog # : H00005728-M01

規格 : [100 ug]

[List All](#)

Specification

Product Description: Mouse monoclonal antibody raised against a partial recombinant PTEN.

Immunogen: PTEN (AAH05821, 221 a.a. ~ 320 a.a) partial recombinant protein with GST tag. MW of the GST tag alone is 26 KDa.

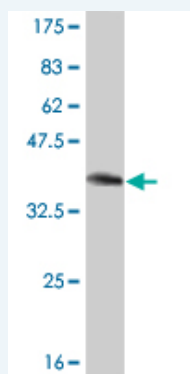
Sequence: KVKIYSSNSGPTRRREDKFMFYEFPPQPLPVCGLDIKVEFFHKQNKMLKKDK MFHFWVNTFFIPGPEETSEKVENGSLCDQEIDSICSIERADNDKEYLVLT

Host: Mouse

Reactivity: Human

Isotype: IgG2a Kappa

Quality Control Testing: Antibody Reactive Against Recombinant Protein.



Western Blot detection against Immunogen (36.63 KDa) .

Storage Buffer: In 1x PBS, pH 7.4

Storage Instruction: Store at -20°C or lower. Aliquot to avoid repeated freezing and thawing.

MSDS: [Download](#)

Datasheet: [Download](#)

Applications

Western Blot (Recombinant protein)

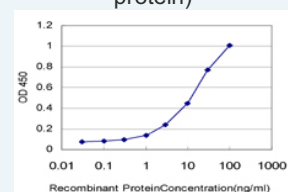
[Protocol Download](#)

Sandwich ELISA (Recombinant protein)

Application Image

Western Blot (Recombinant protein)

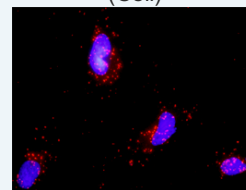
Sandwich ELISA (Recombinant protein)



[enlarge](#)

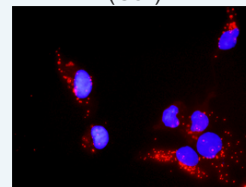
ELISA

In situ Proximity Ligation Assay (Cell)

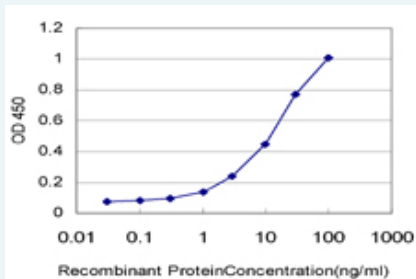


[enlarge](#)

In situ Proximity Ligation Assay (Cell)



[enlarge](#)

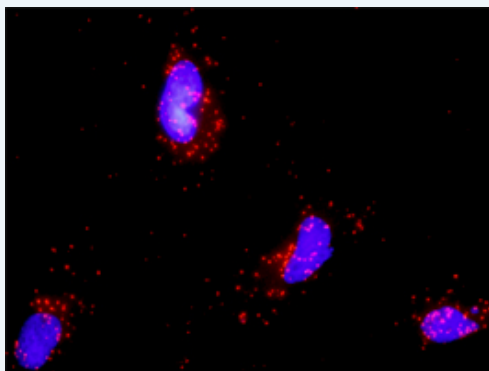


Detection limit for recombinant GST tagged PTEN is approximately 0.3ng/ml as a capture antibody.

Protocol Download

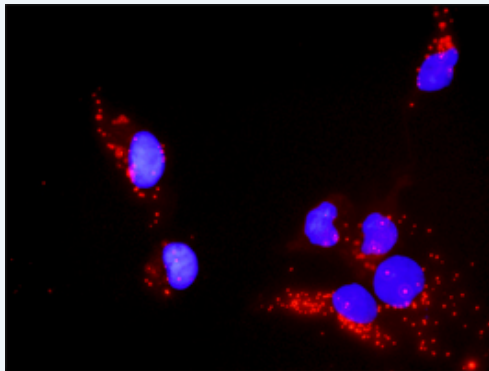
ELISA

In situ Proximity Ligation Assay (Cell)



Proximity Ligation Analysis of protein-protein interactions between PDGFRB and PTEN. HeLa cells were stained with anti-PDGFRB rabbit purified polyclonal 1:1200 and anti-PTEN mouse monoclonal antibody 1:50. Each red dot represents the detection of protein-protein interaction complex, and nuclei were counterstained with DAPI (blue).

In situ Proximity Ligation Assay (Cell)



Proximity Ligation Analysis of protein-protein interactions between PXN and PTEN. Mahlavu cells were stained with anti-PXN rabbit purified polyclonal 1:1200 and anti-PTEN mouse monoclonal antibody 1:50. Each red dot represents the detection of protein-protein interaction complex, and nuclei were counterstained with DAPI (blue).

Gene Information

Entrez GeneID: [5728](#)

GeneBank [BC005821](#)
Accession#:

Protein [AAH05821](#)
Accession#:

Gene Name: PTEN

Gene Alias: 10q23del,BZS,MGC11227,MHAM,MMAC1,PTEN1,TEP1

Gene phosphatase and tensin homolog

Description:

Omim ID: [137800](#), [153480](#), [158350](#), [174900](#), [176807](#), [176920](#), [188470](#), [276950](#), [601728](#), [605309](#), [607174](#)

Gene Ontology: [Hyperlink](#)

Gene Summary: This gene was identified as a tumor suppressor that is mutated in a large number of cancers at high frequency. The protein encoded this gene is a phosphatidylinositol-3,4,5-trisphosphate 3-phosphatase. It contains a tensin like domain as well as a catalytic domain similar to that of the dual specificity protein tyrosine phosphatases. Unlike most of the protein tyrosine phosphatases, this protein preferentially dephosphorylates phosphoinositide substrates. It negatively regulates intracellular levels of phosphatidylinositol-3,4,5-trisphosphate in cells and functions as a tumor suppressor by negatively regulating AKT/PKB signaling pathway. [provided by RefSeq]

Other Designations: MMAC1 phosphatase and tensin homolog deleted on chromosome 10, OTTHUMP00000020032, mutated in multiple advanced cancers 1

Gene Pathway

[Endometrial cancer](#) [Focal adhesion](#) [Glioma](#) [Inositol phosphate metabolism](#) [Melanoma](#) [p53 signaling pathway](#) [Pathways in cancer](#) [Phosphatidylinositol signaling system](#) [Prostate cancer](#) [Small cell lung cancer](#) [Tight junction](#)

Related Disease

[Abnormalities, Multiple](#) [Adenocarcinoma](#) [Adenocarcinoma, Papillary](#) [Alzheimer Disease](#) [Alzheimer disease](#) [Astrocytoma](#) [Autistic Disorder](#) [Brain Neoplasms](#) [Breast cancer](#) [Breast Neoplasms](#) [Carcinoma](#) [Endometrioid](#) [Carcinoma, Squamous Cell](#) [Cardiovascular Diseases](#) [Cleft Lip](#) [Cleft Palate](#) [Colon cancer](#) [Colonic Neoplasms](#) [Colorectal Neoplasms](#) [Craniofacial Abnormalities](#)

... see more