



# SZABO SCANDIC

Part of Europa Biosite

## Produktinformation



Forschungsprodukte & Biochemikalien



Zellkultur & Verbrauchsmaterial



Diagnostik & molekulare Diagnostik



Laborgeräte & Service

Weitere Information auf den folgenden Seiten!  
See the following pages for more information!



### Lieferung & Zahlungsart

siehe unsere [Liefer- und Versandbedingungen](#)

### Zuschläge

- Mindermengenzuschlag
- Trockeneiszuschlag
- Gefahrgutzuschlag
- Expressversand

### SZABO-SCANDIC HandelsgmbH

Quellenstraße 110, A-1100 Wien

T. +43(0)1 489 3961-0

F. +43(0)1 489 3961-7

[mail@szabo-scandic.com](mailto:mail@szabo-scandic.com)

[www.szabo-scandic.com](http://www.szabo-scandic.com)

[linkedin.com/company/szaboscandic](https://www.linkedin.com/company/szaboscandic) 

## PTGER3 293T Cell Transient Overexpression Lysate(Denatured)

Catalog # : H00005733-T02

規格 : [ 100 uL ]

[List All](#)

### Specification

**Transfected Cell Line:** 293T

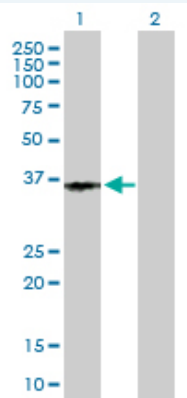
**Plasmid:** pCMV-PTGER3 full-length

**Host:** Human

**Theoretical MW (kDa):** 42.7

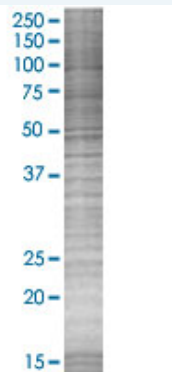
**Quality Control Testing:** Transient overexpression cell lysate was tested with Anti-PTGER3 antibody ([H00005733-B01P](#)) by Western Blots.

#### Western Blot



Lane 1: PTGER3 transfected lysate ( 42.7 KDa)  
Lane 2: Non-transfected lysate.

#### SDS-PAGE Gel



PTGER3 transfected lysate.

**Storage Buffer:** 1X Sample Buffer (50 mM Tris-HCl, 2% SDS, 10% glycerol, 300 mM 2-mercaptoethanol, 0.01% Bromophenol blue)

**Storage Instruction:** Store at -80°C. Aliquot to avoid repeated freezing and thawing.

**MSDS:**  [Download](#)

### Applications

### Application Image

Western Blot

## Western Blot

### Gene Information

Entrez GeneID: [5733](#)

GeneBank Accession#: [NM\\_198715](#)

Protein Accession#: [NP\\_942008.1](#)

Gene Name: PTGER3

Gene Alias: EP3,EP3-I,EP3-II,EP3-III,EP3-IV,EP3e,MGC141828,MGC141829,MGC27302

Gene Description: prostaglandin E receptor 3 (subtype EP3)

Omim ID: [176806](#)

Gene Ontology: [Hyperlink](#)

**Gene Summary:** The protein encoded by this gene is a member of the G-protein coupled receptor family. This protein is one of four receptors identified for prostaglandin E2 (PGE2). This receptor may have many biological functions, which involve digestion, nervous system, kidney reabsorption, and uterine contraction activities. Studies of the mouse counterpart suggest that this receptor may also mediate adrenocorticotrophic hormone response as well as fever generation in response to exogenous and endogenous stimuli. Multiple transcript variants encoding different isoforms have been found for this gene. [provided by RefSeq]

**Other Designations:** OTTHUMP00000011033,OTTHUMP00000011034,OTTHUMP00000011035,PGE receptor, EP3 subtype,prostaglandin E receptor EP3 subtype 3 isoform,prostaglandin E receptor 3, subtype EP3,prostaglandin E2 receptor,prostaglandin receptor (PGE-2),prostanoid EP3 receptor

### Gene Pathway

[Calcium signaling pathway](#) [Neuroactive ligand-receptor interaction](#)

### Related Disease

[Alzheimer Disease](#) [Alzheimer disease](#) [Asthma](#) [Asthma](#) [Cardiovascular Diseases](#) [Chorioamnionitis](#) [Connective Tissue Diseases](#) [Diabetes Complications](#) [Diabetes Mellitus, Type 2](#) [Edema](#) [Fetal Diseases](#) [Fetal Membranes, Premature Rupture](#) [Genetic Predisposition to Disease](#) [Infection](#) [Inflammation](#) [Kidney Failure, Chronic](#) [Metabolic Syndrome X](#) [Musculoskeletal Diseases](#) [Neoplasms](#)

... see more