



SZABO SCANDIC

Part of Europa Biosite

Produktinformation



Forschungsprodukte & Biochemikalien



Zellkultur & Verbrauchsmaterial



Diagnostik & molekulare Diagnostik



Laborgeräte & Service

Weitere Information auf den folgenden Seiten!
See the following pages for more information!



Lieferung & Zahlungsart

siehe unsere [Liefer- und Versandbedingungen](#)

Zuschläge

- Mindermengenzuschlag
- Trockeneiszuschlag
- Gefahrgutzuschlag
- Expressversand

SZABO-SCANDIC HandelsgmbH

Quellenstraße 110, A-1100 Wien

T. +43(0)1 489 3961-0

F. +43(0)1 489 3961-7

mail@szabo-scandic.com

www.szabo-scandic.com

[linkedin.com/company/szaboscandic](https://www.linkedin.com/company/szaboscandic) 



PTGER4 purified MaxPab rabbit polyclonal antibody (D01P) MaxPab®

Catalog # : H00005734-D01P

規格 : [100 ug]

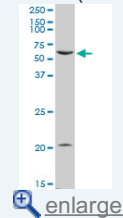
List All

Specification

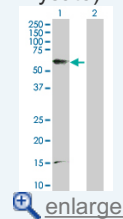
Product Description:	Rabbit polyclonal antibody raised against a full-length human PTGER4 protein.
Immunogen:	PTGER4 (NP_000949.1, 1 a.a. ~ 488 a.a) full-length human protein.
Sequence:	MSTPGVNSSASLSPDRLNSPVTIPAVMFIGVVGNLVAIVLCKSRKEQKE TTFYTLVCGLAVTDLLGTLVSPVTIATYMKGQWPGGQPLCEYSTFILLF FLSGLSIIICAMSVERYLAINHAYFYSHYVDKRLAGLTLFAVYASNVLCAL PNMGLGSSRLQYPDTWCFIDWTTNVTAAHAAYS MYAGFSSFLILATVLC NVLVCGALLRMHRQFMRRTSLGTEQHHAAAAASVASRGHPAASPALPR LSDFRRRRSFRRIAGAEIQMVILLIATSLVVLICSIPLVVRVFNQLYQPSLE REVSKNPDQLAIRIASVNPILDPIWYILLRKTVLSKAIEKIKCLFCRIGGSRRE RSGQHCSDSQRTSSAMSGHSRSFISRELKEISSTSQTLLPDLPLDSEN GLGGRNLLPGVPGMGLAQEDTTLRRTLRISETSDSSQGQDSESVLLVD EAGGSGRAGPAPKGSLLQVTFPSETLNLSEKCI
Host:	Rabbit
Reactivity:	Human
Quality Control Testing:	Antibody reactive against mammalian transfected lysate.
Storage Buffer:	In 1x PBS, pH 7.4
Storage Instruction:	Store at -20°C or lower. Aliquot to avoid repeated freezing and thawing.
MSDS:	 Download
Datasheet:	 Download

Application Image

Western Blot (Cell lysate)



Western Blot (Transfected lysate)

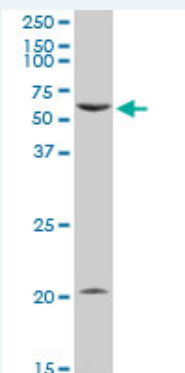


Publication Reference


1. [Abnormalities of neurotransmitter and neuropeptide systems in human neuroepithelioma cells infected by three Toxoplasma strains.](#)
 Xiao J, Li Y, Jones-Brando L, Yolken RHJ Neural Transm. 2013 Jul 3.

Applications

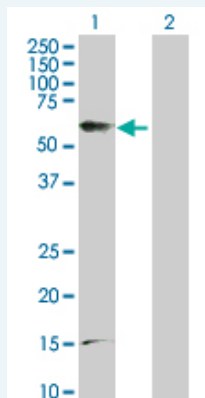
Western Blot (Cell lysate)



PTGER4 MaxPab rabbit polyclonal antibody. Western Blot analysis of PTGER4 expression in Jurkat.

 [Protocol Download](#)

Western Blot (Transfected lysate)



Western Blot analysis of PTGER4 expression in transfected 293T cell line ([H00005734-T04](#)) by PTGER4 MaxPab polyclonal antibody.

Lane 1: PTGER4 transfected lysate(53.10 KDa).

Lane 2: Non-transfected lysate.

 [Protocol Download](#)

Gene Information

Entrez GeneID: [5734](#)

GeneBank [NM_000958](#)

Accession#:

Protein [NP_000949.1](#)

Accession#:

Gene Name: PTGER4

Gene Alias: EP4,EP4R,MGC126583

Gene Description: prostaglandin E receptor 4 (subtype EP4)

Omim ID: [601586](#)

Gene Ontology: [Hyperlink](#)

Gene Summary: The protein encoded by this gene is a member of the G-protein coupled receptor family. This protein is one of four receptors identified for prostaglandin E2 (PGE2). This receptor can activate T-cell factor signaling. It has been shown to mediate PGE2 induced expression of early growth response 1 (EGR1), regulate the level and stability of cyclooxygenase-2 mRNA, and lead to the phosphorylation of glycogen synthase kinase-3. Knockout studies in mice suggest that this receptor may be involved in the neonatal adaptation of circulatory system, osteoporosis, as well as initiation of skin immune responses. [provided by RefSeq]

Other Designations: PGE receptor, EP4 subtype, prostaglandin E receptor 4, subtype

EP4, prostaglandin E2 receptor

Gene Pathway

[Neuroactive ligand-receptor interaction](#)

Related Disease

[Adenoma](#) [Alzheimer Disease](#) [Alzheimer disease](#) [Arthritis, Rheumatoid](#) [Asthma](#) [Asthma](#)
[Bipolar Disorder](#) [Cardiovascular Diseases](#) [Chorioamnionitis](#) [Colorectal Neoplasms](#)
[Coronary Artery Disease](#) [Crohn Disease](#) [Diabetes Complications](#) [Diabetes Mellitus, Type 1](#)
[Diabetes Mellitus, Type 2](#) [Ductus Arteriosus, Patent](#) [Edema](#)
[Fetal Membranes, Premature Rupture](#) [Genetic Predisposition to Disease](#)

... see more

[服務條款](#) | [隱私權政策](#) | [著作及商標](#) | [網站地圖](#)

©2016 亞諾法生技股份有限公司 Abnova Corporation. 版權所有.