



# SZABO SCANDIC

Part of Europa Biosite

## Produktinformation



Forschungsprodukte & Biochemikalien



Zellkultur & Verbrauchsmaterial



Diagnostik & molekulare Diagnostik



Laborgeräte & Service

Weitere Information auf den folgenden Seiten!  
See the following pages for more information!



### Lieferung & Zahlungsart

siehe unsere [Liefer- und Versandbedingungen](#)

### Zuschläge

- Mindermengenzuschlag
- Trockeneiszuschlag
- Gefahrgutzuschlag
- Expressversand

### SZABO-SCANDIC HandelsgmbH

Quellenstraße 110, A-1100 Wien

T. +43(0)1 489 3961-0

F. +43(0)1 489 3961-7

[mail@szabo-scandic.com](mailto:mail@szabo-scandic.com)

[www.szabo-scandic.com](http://www.szabo-scandic.com)

[linkedin.com/company/szaboscandic](https://www.linkedin.com/company/szaboscandic) 

## PTGER4 293T Cell Transient Overexpression Lysate(Denatured)

Catalog # : H00005734-T04

規格 : [ 100 uL ]

[List All](#)

### Specification

**Transfected Cell Line:** 293T

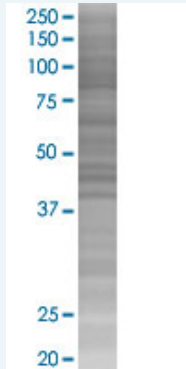
**Plasmid:** pCMV-PTGER4 full-length

**Host:** Human

**Theoretical MW (kDa):** 53.1

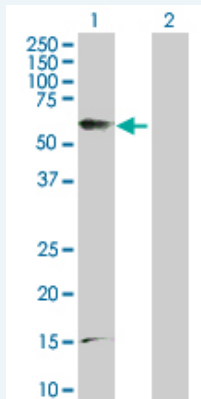
**Quality Control Testing:** Transient overexpression cell lysate was tested with Anti-PTGER4 antibody ([H00005734-D01P](#)) by Western Blots.

#### SDS-PAGE Gel



PTGER4 transfected lysate.

#### Western Blot



Lane 1: PTGER4 transfected lysate ( 53.10 KDa)

Lane 2: Non-transfected lysate.

**Storage Buffer:** 1X Sample Buffer (50 mM Tris-HCl, 2% SDS, 10% glycerol, 300 mM 2-mercaptoethanol, 0.01% Bromophenol blue)

**Storage Instruction:** Store at -80°C. Aliquot to avoid repeated freezing and thawing.

**MSDS:**  [Download](#)

### Applications

### Application Image

Western Blot

## Western Blot

### Gene Information

Entrez GeneID: [5734](#)

GeneBank Accession#: [NM\\_000958](#)

Protein Accession#: [NP\\_000949.1](#)

Gene Name: PTGER4

Gene Alias: EP4,EP4R,MGC126583

Gene Description: prostaglandin E receptor 4 (subtype EP4)

Omim ID: [601586](#)

Gene Ontology: [Hyperlink](#)

**Gene Summary:** The protein encoded by this gene is a member of the G-protein coupled receptor family. This protein is one of four receptors identified for prostaglandin E2 (PGE2). This receptor can activate T-cell factor signaling. It has been shown to mediate PGE2 induced expression of early growth response 1 (EGR1), regulate the level and stability of cyclooxygenase-2 mRNA, and lead to the phosphorylation of glycogen synthase kinase-3. Knockout studies in mice suggest that this receptor may be involved in the neonatal adaptation of circulatory system, osteoporosis, as well as initiation of skin immune responses. [provided by RefSeq]

Other Designations: PGE receptor, EP4 subtype, prostaglandin E receptor 4, subtype EP4, prostaglandin E2 receptor

### Gene Pathway

[Neuroactive ligand-receptor interaction](#)

### Related Disease

[Adenoma](#) [Alzheimer Disease](#) [Alzheimer disease](#) [Arthritis](#), [Rheumatoid](#) [Asthma](#) [Asthma](#) [Bipolar Disorder](#) [Cardiovascular Diseases](#) [Chorioamnionitis](#) [Colorectal Neoplasms](#) [Coronary Artery Disease](#) [Crohn Disease](#) [Diabetes Complications](#) [Diabetes Mellitus, Type 1](#) [Diabetes Mellitus, Type 2](#) [Ductus Arteriosus](#), [Patent](#) [Edema](#) [Fetal Membranes](#), [Premature Rupture](#) [Genetic Predisposition to Disease](#)

... see more