



# SZABO SCANDIC

Part of Europa Biosite

## Produktinformation



Forschungsprodukte & Biochemikalien



Zellkultur & Verbrauchsmaterial



Diagnostik & molekulare Diagnostik



Laborgeräte & Service

Weitere Information auf den folgenden Seiten!  
See the following pages for more information!



### Lieferung & Zahlungsart

siehe unsere [Liefer- und Versandbedingungen](#)

### Zuschläge

- Mindermengenzuschlag
- Trockeneiszuschlag
- Gefahrgutzuschlag
- Expressversand

### SZABO-SCANDIC HandelsgmbH

Quellenstraße 110, A-1100 Wien

T. +43(0)1 489 3961-0

F. +43(0)1 489 3961-7

[mail@szabo-scandic.com](mailto:mail@szabo-scandic.com)

[www.szabo-scandic.com](http://www.szabo-scandic.com)

[linkedin.com/company/szaboscandic](https://www.linkedin.com/company/szaboscandic) 



**PTGIS purified MaxPab mouse polyclonal antibody (B01P)** MaxPab®

Catalog # : H00005740-B01P

規格 : [ 50 ug ]

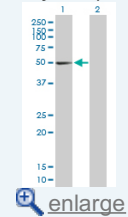
[List All](#)

**Specification**

<b>Product Description:</b>	Mouse polyclonal antibody raised against a full-length human PTGIS protein.
<b>Immunogen:</b>	PTGIS (NP_000952.1, 1 a.a. ~ 500 a.a) full-length human protein.
<b>Sequence:</b>	MAWAALLGLLAALLLLLLLRRRTRRPGEPLDLGSIPWLGALDFGKD AASFLTRMKEKHGDIFTILVGGRYVTLLDPHSYDAVWEPRTLDFHAY AIFLMERIFDVQLPHYSPSDEKARMKLTLLHRELQALTEAMYTNLHAVLLG DATEAGSGWHEMGLLDFSYSFLLRAGYLTLYGIEALPRTHESQAQDRVH SADVFHTFRQLDRLLPKLARGSLSVGDKDHMCVKSRLWKLLSPARLA RRAHRSKWLESYLLHLEEMGVSEEMQARALVLQLWATQGNMGPAAFW LLLFLKNPEALAAVRGELESILWQAEQPVSTTTLPQKVL DSTPVLDSV LSESLRLTAAPFITREVVDLAMPADGREFNLRGDRLLFPFLSPQR DPEIYTDPEVFKYNRFLNPDGSEKDFYKDGKRLKNYNMPWGAGHNHCL GRSYAVNSIKQFVFLVLVHLDLELINADVEIPEFDLSRYGFGMLMQPEHDVP VRYRIRP
<b>Host:</b>	Mouse
<b>Reactivity:</b>	Human
<b>Quality Control Testing:</b>	Antibody reactive against mammalian transfected lysate.
<b>Storage Buffer:</b>	In 1x PBS, pH 7.4
<b>Storage Instruction:</b>	Store at -20°C or lower. Aliquot to avoid repeated freezing and thawing.
<b>MSDS:</b>	 <a href="#">Download</a>
<b>Datasheet:</b>	 <a href="#">Download</a>

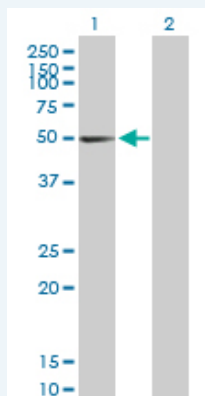
**Application Image**

Western Blot (Transfected lysate)



**Applications**

Western Blot (Transfected lysate)



Western Blot analysis of PTGIS expression in transfected 293T cell line (H00005740-T01) by PTGIS MaxPab polyclonal antibody.

Lane1:PTGIS transfected lysate(55 KDa).

## Gene Information

**Entrez GeneID:** [5740](#)

**GeneBank Accession#:** [NM\\_000961.3](#)

**Protein Accession#:** [NP\\_000952.1](#)

**Gene Name:** PTGIS

**Gene Alias:** CYP8,CYP8A1,MGC126858,MGC126860,PGIS,PTGI

**Gene Description:** prostaglandin I2 (prostacyclin) synthase

**Omim ID:** [145500](#), [601699](#)

**Gene Ontology:** [Hyperlink](#)

**Gene Summary:** This gene encodes a member of the cytochrome P450 superfamily of enzymes. The cytochrome P450 proteins are monooxygenases which catalyze many reactions involved in drug metabolism and synthesis of cholesterol, steroids and other lipids. However, this protein is considered a member of the cytochrome P450 superfamily on the basis of sequence similarity rather than functional similarity. This endoplasmic reticulum membrane protein catalyzes the conversion of prostglandin H2 to prostacyclin (prostaglandin I2), a potent vasodilator and inhibitor of platelet aggregation. An imbalance of prostacyclin and its physiological antagonist thromboxane A2 contribute to the development of myocardial infarction, stroke, and atherosclerosis. [provided by RefSeq]

**Other Designations:** OTTHUMP00000031777,cytochrome P450, family 8, subfamily A, polypeptide 1

## Gene Pathway

[Arachidonic acid metabolism](#) [Metabolic pathways](#)

## Related Disease

[Adenocarcinoma](#) [Adenomatous Polyps](#) [Alzheimer Disease](#) [Alzheimer disease](#)  
[Atherosclerosis](#) [Brain Ischemia](#) [Breast cancer](#) [Breast Neoplasms](#) [Cardiovascular Diseases](#)  
[Cerebral Infarction](#) [Chronic Disease](#) [Colon cancer](#) [Colorectal Neoplasms](#)  
[Diabetes Complications](#) [Diabetes Mellitus, Type 2](#) [Ductus Arteriosus, Patent](#) [Edema](#)  
[Esophageal Neoplasms](#) [Genetic Predisposition to Disease](#)

... see more