



# SZABO SCANDIC

Part of Europa Biosite

## Produktinformation



Forschungsprodukte & Biochemikalien



Zellkultur & Verbrauchsmaterial



Diagnostik & molekulare Diagnostik



Laborgeräte & Service

Weitere Information auf den folgenden Seiten!  
See the following pages for more information!



### Lieferung & Zahlungsart

siehe unsere [Liefer- und Versandbedingungen](#)

### Zuschläge

- Mindermengenzuschlag
- Trockeneiszuschlag
- Gefahrgutzuschlag
- Expressversand

### SZABO-SCANDIC HandelsgmbH

Quellenstraße 110, A-1100 Wien

T. +43(0)1 489 3961-0

F. +43(0)1 489 3961-7

[mail@szabo-scandic.com](mailto:mail@szabo-scandic.com)

[www.szabo-scandic.com](http://www.szabo-scandic.com)

[linkedin.com/company/szaboscandic](https://www.linkedin.com/company/szaboscandic) 

## PTGIS monoclonal antibody (M02), clone 3B11

Catalog # : H00005740-M02

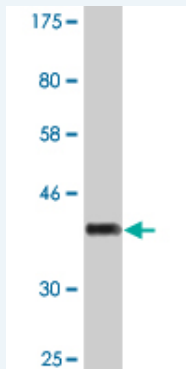
規格 : [ 100 ug ]

[List All](#)

### Specification

<b>Product Description:</b>	Mouse monoclonal antibody raised against a partial recombinant PTGIS.
<b>Immunogen:</b>	PTGIS (NP_000952, 391 a.a. ~ 500 a.a) partial recombinant protein with GST tag. MW of the GST tag alone is 26 KDa.
<b>Sequence:</b>	PQRDPEIYTDPEVFKYNRFLNPDGSEKKDFYKDGKRLKNYNMPWGAGH NHCLGRSYAVNSIKQFVFLVLVHLDLELINADVEIPEFDLSRYGFGLMQPE HDVPRYRIRP
<b>Host:</b>	Mouse
<b>Reactivity:</b>	Human
<b>Isotype:</b>	IgG1 Kappa

**Quality Control Testing:** Antibody Reactive Against Recombinant Protein.



Western Blot detection against Immunogen (37.84 KDa) .

**Storage Buffer:** In 1x PBS, pH 7.4

**Storage Instruction:** Store at -20°C or lower. Aliquot to avoid repeated freezing and thawing.

**MSDS:** [Download](#)

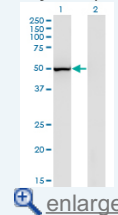
**Datasheet:** [Download](#)

### Applications

Western Blot (Transfected lysate)

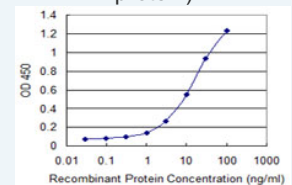
### Application Image

Western Blot (Transfected lysate)



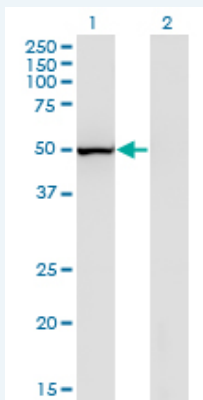
Western Blot (Recombinant protein)

Sandwich ELISA (Recombinant protein)



[enlarge](#)

ELISA



Western Blot analysis of PTGIS expression in transfected 293T cell line by PTGIS monoclonal antibody (M02), clone 3B11.

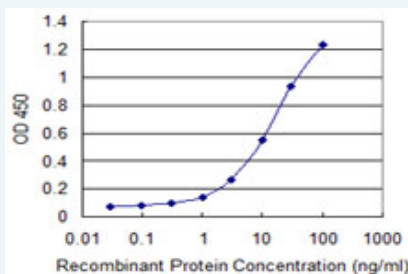
Lane 1: PTGIS transfected lysate (Predicted MW: 57.1 KDa).  
Lane 2: Non-transfected lysate.

[Protocol Download](#)

#### Western Blot (Recombinant protein)

[Protocol Download](#)

#### Sandwich ELISA (Recombinant protein)



Detection limit for recombinant GST tagged PTGIS is 0.3 ng/ml as a capture antibody.

[Protocol Download](#)

#### ELISA

#### Gene Information

Entrez GeneID: [5740](#)

GeneBank [NM\\_000961](#)

Accession#:

Protein [NP\\_000952](#)

Accession#:

Gene Name: PTGIS

Gene Alias: CYP8,CYP8A1,MGC126858,MGC126860,PGIS,PTGI

Gene Description: prostaglandin I2 (prostacyclin) synthase

Description:

Omim ID: [145500](#), [601699](#)

Gene Ontology: [Hyperlink](#)

**Gene Summary:** This gene encodes a member of the cytochrome P450 superfamily of enzymes. The cytochrome P450 proteins are monooxygenases which catalyze many reactions involved in drug metabolism and synthesis of cholesterol, steroids and other lipids. However, this protein is considered a member of the cytochrome P450 superfamily on the basis of sequence similarity rather than functional similarity. This endoplasmic

reticulum membrane protein catalyzes the conversion of prostglandin H2 to prostacyclin (prostaglandin I2), a potent vasodilator and inhibitor of platelet aggregation. An imbalance of prostacyclin and its physiological antagonist thromboxane A2 contribute to the development of myocardial infarction, stroke, and atherosclerosis. [provided by RefSeq

---

**Other** OTTHUMP00000031777,cytochrome P450, family 8, subfamily A,  
**Designations:** polypeptide 1

---

### Gene Pathway

---

[Arachidonic acid metabolism](#) [Metabolic pathways](#)

### Related Disease

---

[Adenocarcinoma](#) [Adenomatous Polyps](#) [Alzheimer Disease](#) [Alzheimer disease](#)  
[Atherosclerosis](#) [Brain Ischemia](#) [Breast cancer](#) [Breast Neoplasms](#) [Cardiovascular Diseases](#)  
[Cerebral Infarction](#) [Chronic Disease](#) [Colon cancer](#) [Colorectal Neoplasms](#)  
[Diabetes Complications](#) [Diabetes Mellitus, Type 2](#) [Ductus Arteriosus, Patent](#) [Edema](#)  
[Esophageal Neoplasms](#) [Genetic Predisposition to Disease](#)

... see more

---

[服務條款](#) | [隱私權政策](#) | [著作及商標](#) | [網站地圖](#)

©2016 亞諾法生技股份有限公司 Abnova Corporation. 版權所有.