



SZABO SCANDIC

Part of Europa Biosite

Produktinformation



Forschungsprodukte & Biochemikalien



Zellkultur & Verbrauchsmaterial



Diagnostik & molekulare Diagnostik



Laborgeräte & Service

Weitere Information auf den folgenden Seiten!
See the following pages for more information!



Lieferung & Zahlungsart

siehe unsere [Liefer- und Versandbedingungen](#)

Zuschläge

- Mindermengenzuschlag
- Trockeneiszuschlag
- Gefahrgutzuschlag
- Expressversand

SZABO-SCANDIC HandelsgmbH

Quellenstraße 110, A-1100 Wien

T. +43(0)1 489 3961-0

F. +43(0)1 489 3961-7

mail@szabo-scandic.com

www.szabo-scandic.com

[linkedin.com/company/szaboscandic](https://www.linkedin.com/company/szaboscandic) 

PTGIS (Human) IP-WB Antibody Pair

Catalog # : H00005740-PW1

規格 : [1 Set]

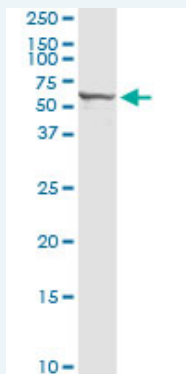
List All

Specification

Product Description: This IP-WB antibody pair set comes with one antibody for immunoprecipitation and another to detect the precipitated protein in western blot.

Reactivity: Human

Quality Control Testing: Immunoprecipitation-Western Blot (IP-WB)



Immunoprecipitation of PTGIS transfected lysate using rabbit polyclonal anti-PTGIS and Protein A Magnetic Bead (U000Z), and immunoblotted with mouse purified polyclonal anti-PTGIS.

Supplied Product: Antibody pair set content:
1. Antibody pair for IP: rabbit polyclonal anti-PTGIS (300 ul)
2. Antibody pair for WB: mouse purified polyclonal anti-PTGIS (50 ug)

Storage Instruction: Store reagents of the antibody pair set at -20°C or lower. Please aliquot to avoid repeated freeze thaw cycle. Reagents should be returned to -20°C storage immediately after use.

MSDS:  [Download](#)

Applications

Immunoprecipitation-Western Blot

 [Protocol Download](#)

Gene Information

Entrez GeneID: [5740](#)

Gene Name: PTGIS

Gene Alias: CYP8,CYP8A1,MGC126858,MGC126860,PGIS,PTGI

Gene Description: prostaglandin I2 (prostacyclin) synthase

Omim ID: [145500](#), [601699](#)

Gene Ontology: [Hyperlink](#)

Application Image

Immunoprecipitation-Western Blot

Gene Summary: This gene encodes a member of the cytochrome P450 superfamily of enzymes. The cytochrome P450 proteins are monooxygenases which catalyze many reactions involved in drug metabolism and synthesis of cholesterol, steroids and other lipids. However, this protein is considered a member of the cytochrome P450 superfamily on the basis of sequence similarity rather than functional similarity. This endoplasmic reticulum membrane protein catalyzes the conversion of prostglandin H2 to prostacyclin (prostaglandin I2), a potent vasodilator and inhibitor of platelet aggregation. An imbalance of prostacyclin and its physiological antagonist thromboxane A2 contribute to the development of myocardial infarction, stroke, and atherosclerosis. [provided by RefSeq]

Other OTTHUMP00000031777,cytochrome P450, family 8, subfamily A,
Designations: polypeptide 1

Gene Pathway

[Arachidonic acid metabolism](#) [Metabolic pathways](#)

Related Disease

[Adenocarcinoma](#) [Adenomatous Polyps](#) [Alzheimer Disease](#) [Alzheimer disease](#)
[Atherosclerosis](#) [Brain Ischemia](#) [Breast cancer](#) [Breast Neoplasms](#) [Cardiovascular Diseases](#)
[Cerebral Infarction](#) [Chronic Disease](#) [Colon cancer](#) [Colorectal Neoplasms](#)
[Diabetes Complications](#) [Diabetes Mellitus, Type 2](#) [Ductus Arteriosus, Patent](#) [Edema](#)
[Esophageal Neoplasms](#) [Genetic Predisposition to Disease](#)

... see more

[服務條款](#) | [隱私權政策](#) | [著作及商標](#) | [網站地圖](#)

©2016 亞諾法生技股份有限公司 Abnova Corporation. 版權所有.