



# SZABO SCANDIC

Part of Europa Biosite

## Produktinformation



Forschungsprodukte & Biochemikalien



Zellkultur & Verbrauchsmaterial



Diagnostik & molekulare Diagnostik



Laborgeräte & Service

Weitere Information auf den folgenden Seiten!  
See the following pages for more information!



### Lieferung & Zahlungsart

siehe unsere [Liefer- und Versandbedingungen](#)

### Zuschläge

- Mindermengenzuschlag
- Trockeneiszuschlag
- Gefahrgutzuschlag
- Expressversand

### SZABO-SCANDIC HandelsgmbH

Quellenstraße 110, A-1100 Wien

T. +43(0)1 489 3961-0

F. +43(0)1 489 3961-7

[mail@szabo-scandic.com](mailto:mail@szabo-scandic.com)

[www.szabo-scandic.com](http://www.szabo-scandic.com)

[linkedin.com/company/szaboscandic](https://www.linkedin.com/company/szaboscandic) 

## PTH monoclonal antibody (M15), clone 3C5

Catalog # : H00005741-M15

規格 : [ 100 ug ]

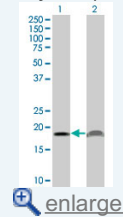
List All

### Specification

<b>Product Description:</b>	Mouse monoclonal antibody raised against a full-length recombinant PTH.
<b>Immunogen:</b>	PTH (NP_000306, 32 a.a.-115 a.a.) full-length recombinant protein.
<b>Sequence:</b>	SVSEIQLMHNLGKHLNSMERVEWLRKKLQDVHNFVALGAPLAPRDAGSQ RPRKKEDNVLVESHEKSLGEADKADVNLTKAKSQ
<b>Host:</b>	Mouse
<b>Reactivity:</b>	Human
<b>Isotype:</b>	IgG1 Kappa
<b>Quality Control Testing:</b>	Antibody Reactive Against Recombinant Protein.
<b>Storage Buffer:</b>	In 1x PBS, pH 7.4
<b>Storage Instruction:</b>	Store at -20°C or lower. Aliquot to avoid repeated freezing and thawing.
<b>MSDS:</b>	<a href="#">Download</a>
<b>Datasheet:</b>	<a href="#">Download</a>

### Application Image

Western Blot (Transfected lysate)

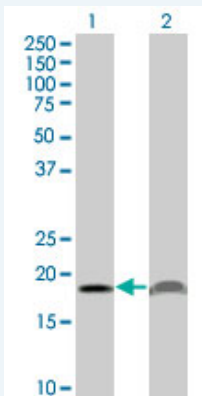


[enlarge](#)

ELISA

### Applications

#### Western Blot (Transfected lysate)



Western Blot analysis of PTH expression in transfected 293T cell line by PTH monoclonal antibody (M15), clone 3C5.

Lane 1: PTH transfected lysate(12.9 KDa).

Lane 2: Non-transfected lysate.

[Protocol Download](#)

ELISA

## Gene Information

Entrez GeneID: [5741](#)

GeneBank  
Accession#: [N/A](#)

Protein  
Accession#: =

Gene Name: PTH

Gene Alias: PTH1

Gene  
Description: parathyroid hormone

Omim ID: [146200](#), [168450](#)

Gene Ontology: [Hyperlink](#)

**Gene Summary:** The protein encoded by this gene is a hormone secreted by parathyroid cells. This hormone elevates blood Ca<sup>2+</sup> level by dissolving the salts in bone and preventing their renal excretion. Defects in this gene are a cause of familial isolated hypoparathyroidism (FIH). [provided by RefSeq]

**Other  
Designations:** parathormone, parathyrin, parathyroid hormone 1

## Gene Pathway

[Neuroactive ligand-receptor interaction](#)

## Related Disease

[Alzheimer Disease](#) [Alzheimer disease](#) [Aortic Valve Stenosis](#) [Body Weight](#)  
[Cardiovascular Diseases](#) [Diabetes Complications](#) [Diabetes Mellitus, Type 2](#) [Edema](#)  
[Fractures, Bone](#) [Genetic Predisposition to Disease](#) [Hip Fractures](#)  
[Hyperparathyroidism](#), [Secondary Kidney Failure](#), [Chronic Lung Neoplasms](#)  
[Metabolic Syndrome X Neoplasms](#) [Ossification of Posterior Longitudinal Ligament](#)  
[Osteonecrosis](#) [Osteoporosis](#)

... see more

[服務條款](#) | [隱私權政策](#) | [著作及商標](#) | [網站地圖](#)

©2016 亞諾法生技股份有限公司 Abnova Corporation. 版權所有.