



SZABO SCANDIC

Part of Europa Biosite

Produktinformation



Forschungsprodukte & Biochemikalien



Zellkultur & Verbrauchsmaterial



Diagnostik & molekulare Diagnostik



Laborgeräte & Service

Weitere Information auf den folgenden Seiten!
See the following pages for more information!



Lieferung & Zahlungsart

siehe unsere [Liefer- und Versandbedingungen](#)

Zuschläge

- Mindermengenzuschlag
- Trockeneiszuschlag
- Gefahrgutzuschlag
- Expressversand

SZABO-SCANDIC HandelsgmbH

Quellenstraße 110, A-1100 Wien

T. +43(0)1 489 3961-0

F. +43(0)1 489 3961-7

mail@szabo-scandic.com

www.szabo-scandic.com

[linkedin.com/company/szaboscandic](https://www.linkedin.com/company/szaboscandic) 

PTH (Human) IP-WB Antibody Pair

Catalog # : H00005741-PW4

規格 : [1 Set]

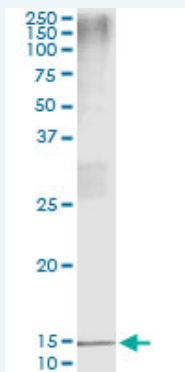
List All

Specification

Product Description: This IP-WB antibody pair set comes with one antibody for immunoprecipitation and another to detect the precipitated protein in western blot.

Reactivity: Human

Quality Control Testing: Immunoprecipitation-Western Blot (IP-WB)



Immunoprecipitation of PTH transfected lysate using mouse monoclonal anti-PTH and Protein A Magnetic Bead ([U0007](#)), and immunoblotted with rabbit polyclonal anti-PTH.

Supplied Product: Antibody pair set content:
1. Antibody pair for IP: mouse monoclonal anti-PTH (300 ug)
2. Antibody pair for WB: rabbit polyclonal anti-PTH (50 ul)

Storage Instruction: Store reagents of the antibody pair set at -20°C or lower. Please aliquot to avoid repeated freeze thaw cycle. Reagents should be returned to -20°C storage immediately after use.

MSDS:  [Download](#)

Applications

Immunoprecipitation-Western Blot

 [Protocol Download](#)

Gene Information

Entrez GeneID: [5741](#)

Gene Name: PTH

Gene Alias: PTH1

Gene Description: parathyroid hormone

Omim ID: [146200](#), [168450](#)

Gene Ontology: [Hyperlink](#)

Application Image

Immunoprecipitation-Western Blot

Gene Summary: The protein encoded by this gene is a hormone secreted by parathyroid cells. This hormone elevates blood Ca²⁺ level by dissolving the salts in bone and preventing their renal excretion. Defects in this gene are a cause of familial isolated hypoparathyroidism (FIH). [provided by RefSeq]

Other parathormone,parathyrin,parathyroid hormone 1
Designations:

Gene Pathway

[Neuroactive ligand-receptor interaction](#)

Related Disease

[Alzheimer Disease](#) [Alzheimer disease](#) [Aortic Valve Stenosis](#) [Body Weight](#)
[Cardiovascular Diseases](#) [Diabetes Complications](#) [Diabetes Mellitus, Type 2](#) [Edema](#)
[Fractures, Bone](#) [Genetic Predisposition to Disease](#) [Hip Fractures](#)
[Hyperparathyroidism](#) [Secondary Kidney Failure](#) [Chronic Lung Neoplasms](#)
[Metabolic Syndrome X Neoplasms](#) [Ossification of Posterior Longitudinal Ligament](#)
[Osteonecrosis](#) [Osteoporosis](#)

... see more

[服務條款](#) | [隱私權政策](#) | [著作及商標](#) | [網站地圖](#)

©2016 亞諾法生技股份有限公司 Abnova Corporation. 版權所有.