



SZABO SCANDIC

Part of Europa Biosite

Produktinformation



Forschungsprodukte & Biochemikalien



Zellkultur & Verbrauchsmaterial



Diagnostik & molekulare Diagnostik



Laborgeräte & Service

Weitere Information auf den folgenden Seiten!
See the following pages for more information!



Lieferung & Zahlungsart

siehe unsere [Liefer- und Versandbedingungen](#)

Zuschläge

- Mindermengenzuschlag
- Trockeneiszuschlag
- Gefahrgutzuschlag
- Expressversand

SZABO-SCANDIC HandelsgmbH

Quellenstraße 110, A-1100 Wien

T. +43(0)1 489 3961-0

F. +43(0)1 489 3961-7

mail@szabo-scandic.com

www.szabo-scandic.com

[linkedin.com/company/szaboscandic](https://www.linkedin.com/company/szaboscandic) 



PTHLH purified MaxPab mouse polyclonal antibody (B01P) MaxPab®

Catalog # : H00005744-B01P

規格 : [50 ug]

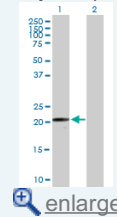
[List All](#)

Specification

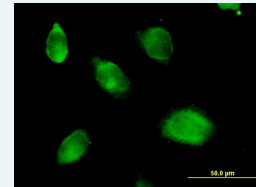
Product Description:	Mouse polyclonal antibody raised against a full-length human PTHLH protein.
Immunogen:	PTHLH (NP_945316.1, 1 a.a. ~ 177 a.a) full-length human protein.
Sequence:	MQRRLVQQWSVAVFLLSYAVPSCGRSVEGLSRRLKRAVSEHQLLHDKG KSIQDLRRRFFLHHLIAEIHAEIRATSEVSPNSKPSNTKNHPVRFGSDDE GRYLTQETNKVETYKEQPLKTPGKKKKGKPGKRKEQEKKRRTSAWL DSGVTGSGLEGDHLSDTSTTSLELDSRRH
Host:	Mouse
Reactivity:	Human
Quality Control Testing:	Antibody reactive against mammalian transfected lysate.
Storage Buffer:	In 1x PBS, pH 7.4
Storage Instruction:	Store at -20°C or lower. Aliquot to avoid repeated freezing and thawing.
MSDS:	 Download
Datasheet:	 Download

Application Image

Western Blot (Transfected lysate)

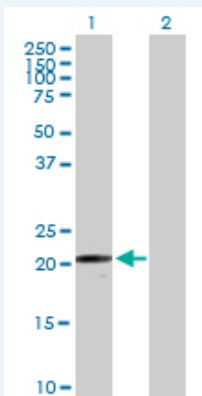


Immunofluorescence



Applications

Western Blot (Transfected lysate)

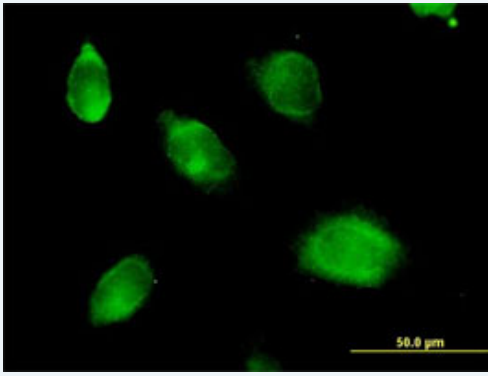


Western Blot analysis of PTHLH expression in transfected 293T cell line ([H00005744-T01](#)) by PTHLH MaxPab polyclonal antibody.

Lane 1: PTHLH transfected lysate(19.47 KDa).
Lane 2: Non-transfected lysate.

 [Protocol Download](#)

Immunofluorescence



[enlarge this image](#)

Immunofluorescence of purified MaxPab antibody to PTHLH on HeLa cell. [antibody concentration 10 ug/ml]

 [Protocol Download](#)

Gene Information

Entrez GeneID: [5744](#)

GeneBank Accession#: [NM_198965](#)

Protein Accession#: [NP_945316.1](#)

Gene Name: PTHLH

Gene Alias: HHM,MGC14611,PLP,PTHR,PTHRP

Gene Description: parathyroid hormone-like hormone

Omim ID: [168470](#)

Gene Ontology: [Hyperlink](#)

Gene Summary: The protein encoded by this gene is a member of the parathyroid hormone family. This hormone regulates endochondral bone development and epithelial-mesenchymal interactions during the formation of the mammary glands and teeth. This hormone is involved in lactation possibly by regulating the mobilization and transfer of calcium to the milk. The receptor of this hormone, PTHR1, is responsible for most cases of humoral hypercalcemia of malignancy. Four alternatively spliced transcript variants encoding two distinct isoforms have been observed. There is also evidence for alternative translation initiation from non-AUG (CUG and GUG) start sites, in-frame and downstream of the initiator AUG codon, to give rise to nuclear forms of this hormone. [provided by RefSeq]

Other Designations: PTH-related protein,humoral hypercalcemia of malignancy,osteostatin,parathyroid hormone-like protein,parathyroid hormone-like related protein,parathyroid hormone-related protein,parathyroid-like protein

Related Disease

[Breast cancer](#) [Breast Neoplasms](#) [Cardiovascular Diseases](#) [Celiac Disease](#) [Diabetes Mellitus, Type 2](#) [Edema](#) [Fractures, Bone](#) [Genetic Predisposition to Disease](#) [Osteoporosis](#) [Ovarian cancer](#) [Ovarian Neoplasms](#) [Thyroid Neoplasms](#)