



SZABO SCANDIC

Part of Europa Biosite

Produktinformation



Forschungsprodukte & Biochemikalien



Zellkultur & Verbrauchsmaterial



Diagnostik & molekulare Diagnostik



Laborgeräte & Service

Weitere Information auf den folgenden Seiten!
See the following pages for more information!



Lieferung & Zahlungsart

siehe unsere [Liefer- und Versandbedingungen](#)

Zuschläge

- Mindermengenzuschlag
- Trockeneiszuschlag
- Gefahrgutzuschlag
- Expressversand

SZABO-SCANDIC HandelsgmbH

Quellenstraße 110, A-1100 Wien

T. +43(0)1 489 3961-0

F. +43(0)1 489 3961-7

mail@szabo-scandic.com

www.szabo-scandic.com

[linkedin.com/company/szaboscandic](https://www.linkedin.com/company/szaboscandic) 

PTHLH 293T Cell Transient Overexpression Lysate(Denatured)

Catalog # : H00005744-T01

規格 : [100 uL]

List All

Specification

Transfected Cell Line: 293T

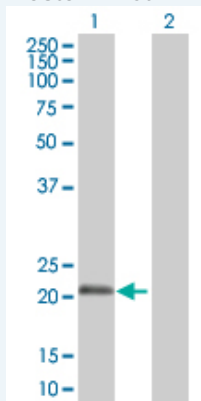
Plasmid: pCMV-PTHLH full-length

Host: Human

Theoretical MW (kDa): 19.58

Quality Control Testing: Transient overexpression cell lysate was tested with Anti-PTHLH antibody ([H00005744-B01](#)) by Western Blots.

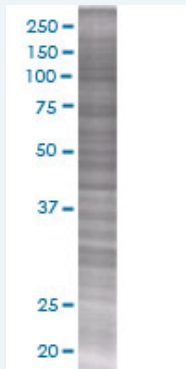
Western Blot



Lane 1: PTHLH transfected lysate (20.2 KDa)

Lane 2: Non-transfected lysate.

SDS-PAGE Gel



PTHLH transfected lysate.

Storage Buffer: 1X Sample Buffer (50 mM Tris-HCl, 2% SDS, 10% glycerol, 300 mM 2-mercaptoethanol, 0.01% Bromophenol blue)

Storage Instruction: Store at -80°C. Aliquot to avoid repeated freezing and thawing.

MSDS:  [Download](#)

Applications

Application Image

Western Blot

Western Blot

Gene Information

Entrez GeneID: [5744](#)

GeneBank Accession#: [NM_198965](#)

Protein Accession#: [NP_945316](#)

Gene Name: PTHLH

Gene Alias: HHM,MGC14611,PLP,PTHR,PTHRP

Gene Description: parathyroid hormone-like hormone

Omim ID: [168470](#)

Gene Ontology: [Hyperlink](#)

Gene Summary: The protein encoded by this gene is a member of the parathyroid hormone family. This hormone regulates endochondral bone development and epithelial-mesenchymal interactions during the formation of the mammary glands and teeth. This hormone is involved in lactation possibly by regulating the mobilization and transfer of calcium to the milk. The receptor of this hormone, PTHR1, is responsible for most cases of humoral hypercalcemia of malignancy. Four alternatively spliced transcript variants encoding two distinct isoforms have been observed. There is also evidence for alternative translation initiation from non-AUG (CUG and GUG) start sites, in-frame and downstream of the initiator AUG codon, to give rise to nuclear forms of this hormone. [provided by RefSeq]

Other Designations: PTH-related protein,humoral hypercalcemia of malignancy,osteostatin,parathyroid hormone-like protein,parathyroid hormone-like related protein,parathyroid hormone-related protein,parathyroid-like protein

Related Disease

[Breast cancer](#) [Breast Neoplasms](#) [Cardiovascular Diseases](#) [Celiac Disease](#)
[Diabetes Mellitus, Type 2](#) [Edema](#) [Fractures, Bone](#) [Genetic Predisposition to Disease](#)
[Osteoporosis](#) [Ovarian cancer](#) [Ovarian Neoplasms](#) [Thyroid Neoplasms](#)