



SZABO SCANDIC

Part of Europa Biosite

Produktinformation



Forschungsprodukte & Biochemikalien



Zellkultur & Verbrauchsmaterial



Diagnostik & molekulare Diagnostik



Laborgeräte & Service

Weitere Information auf den folgenden Seiten!
See the following pages for more information!



Lieferung & Zahlungsart

siehe unsere [Liefer- und Versandbedingungen](#)

Zuschläge

- Mindermengenzuschlag
- Trockeneiszuschlag
- Gefahrgutzuschlag
- Expressversand

SZABO-SCANDIC HandelsgmbH

Quellenstraße 110, A-1100 Wien

T. +43(0)1 489 3961-0

F. +43(0)1 489 3961-7

mail@szabo-scandic.com

www.szabo-scandic.com

[linkedin.com/company/szaboscandic](https://www.linkedin.com/company/szaboscandic) 

PTHR1 polyclonal antibody (A02)

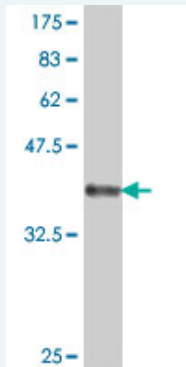
Catalog # : H00005745-A02

規格 : [50 uL]

[List All](#)

Specification

Product Description:	Mouse polyclonal antibody raised against a partial recombinant PTHR1.
Immunogen:	PTHR1 (NP_000307, 27 a.a. ~ 134 a.a) partial recombinant protein with GST tag.
Sequence:	DADDVMTKEEQIFLLHRAQAQCEKRLKEVLQRPASIMESDKGWTSASTS GKPRKDKASGKLYPESEEDKEAPTGSRYRGRPCLPEWDHILCWPLGAP GEVVAVPCPDY
Host:	Mouse
Reactivity:	Human
Quality Control Testing:	Antibody Reactive Against Recombinant Protein.



Western Blot detection against Immunogen (37.99 KDa) .

Storage Buffer: 50 % glycerol

Storage Instruction: Store at -20°C or lower. Aliquot to avoid repeated freezing and thawing.

MSDS: [Download](#)

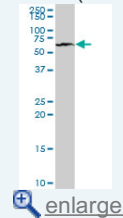
Datasheet: [Download](#)

Applications

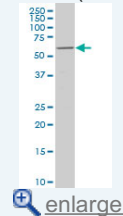
Western Blot (Cell lysate)

Application Image

Western Blot (Cell lysate)

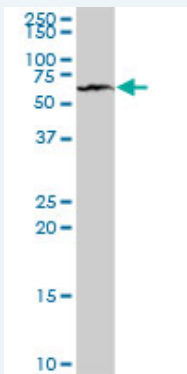


Western Blot (Cell lysate)



Western Blot (Recombinant protein)

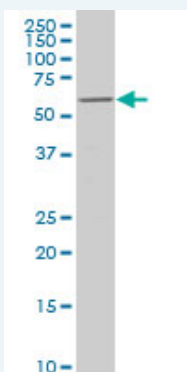
ELISA




PTHR1 polyclonal antibody (A02), Lot # 060807QCS1. Western Blot analysis of PTHR1 expression in HeLa.

 [Protocol Download](#)

Western Blot (Cell lysate)



PTHR1 polyclonal antibody (A02), Lot # 051207JC01 Western Blot analysis of PTHR1 expression in MCF-7 (Cat # L046V1).

 [Protocol Download](#)

Western Blot (Recombinant protein)

 [Protocol Download](#)

ELISA

Gene Information

Entrez GeneID: [5745](#)

GeneBank [NM_000316](#)

Accession#:

Protein [NP_000307](#)

Accession#:

Gene Name: PTH1R

Gene Alias: MGC138426,MGC138452,PTHR,PTHR1

Gene Description: parathyroid hormone 1 receptor

Omim ID: [156400](#), [166000](#), [168468](#)

Gene Ontology: [Hyperlink](#)

Gene Summary: The protein encoded by this gene is a member of the G-protein coupled receptor family 2. This protein is a receptor for parathyroid hormone (PTH) and for parathyroid hormone-like hormone (PTH LH). The activity of this receptor is mediated by G proteins which activate adenylyl cyclase and also a phosphatidylinositol-calcium second messenger system. Defects in this receptor are known to be the cause of Jansen's

metaphyseal chondrodysplasia (JMC), chondrodysplasia Blomstrand type (BOCD), as well as enchondromatosis. [provided by RefSeq]

Other Designations: PTH/PTHr receptor, PTH/PTHrP type I receptor, parathyroid hormone receptor 1, parathyroid hormone/parathyroid hormone-related peptide receptor, parathyroid hormone/parathyroid hormone-related protein receptor, seven transmembrane helix receptor

Gene Pathway

[Neuroactive ligand-receptor interaction](#)

Related Disease

[Alzheimer Disease](#) [Alzheimer disease](#) [Bone Resorption](#) [Cardiovascular Diseases](#) [Diabetes Complications](#) [Diabetes Mellitus, Type 2](#) [Edema](#) [Fractures, Bone](#) [Genetic Predisposition to Disease](#) [Hyperparathyroidism, Secondary](#) [Metabolic Syndrome X](#) [Neoplasms](#) [Obesity](#) [Osteonecrosis](#) [Osteoporosis](#) [Ovarian Failure, Premature](#) [Polycystic Ovary Syndrome](#) [Puberty, Delayed](#) [Puberty, Precocious](#)

... see more

[服務條款](#) | [隱私權政策](#) | [著作及商標](#) | [網站地圖](#)

©2016 亞諾法生技股份有限公司 Abnova Corporation. 版權所有.