



SZABO SCANDIC

Part of Europa Biosite

Produktinformation



Forschungsprodukte & Biochemikalien



Zellkultur & Verbrauchsmaterial



Diagnostik & molekulare Diagnostik



Laborgeräte & Service

Weitere Information auf den folgenden Seiten!
See the following pages for more information!



Lieferung & Zahlungsart

siehe unsere [Liefer- und Versandbedingungen](#)

Zuschläge

- Mindermengenzuschlag
- Trockeneiszuschlag
- Gefahrgutzuschlag
- Expressversand

SZABO-SCANDIC HandelsgmbH

Quellenstraße 110, A-1100 Wien

T. +43(0)1 489 3961-0

F. +43(0)1 489 3961-7

mail@szabo-scandic.com

www.szabo-scandic.com

[linkedin.com/company/szaboscandic](https://www.linkedin.com/company/szaboscandic) 



PTK2 purified MaxPab rabbit polyclonal antibody (D01P) MaxPab®

Catalog # : H00005747-D01P

規格 : [100 ug]

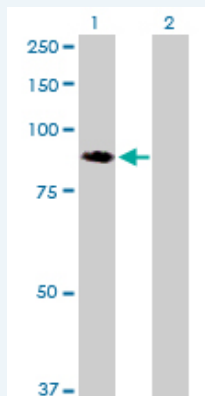
[List All](#)

Specification

Product Description:	Rabbit polyclonal antibody raised against a full-length human PTK2 protein.
Immunogen:	PTK2 (AAH28733.1, 1 a.a. ~ 680 a.a) full-length human protein.
Sequence:	MKYQEVRLTSFNISVSFPAETDDYAEIIDEEDTYTMPSTRDYEQRRERIE LGRCIGEGQFGDVHQGIYMSPENPALAVAIAKTCNKCTSDSVREKFLQEAL TMRQFDHPHIVKLGIVITENPVWIIMELCTLGELRSFLQVRKYSLDLASELILY AYQLSTALAYLESKRFFVHRDIAARNVLVSSNDCVKLGDFGLSRYMEDST YYKASKGKLPKWMAPESINFRFRFTSASDVWMFVCMWEILMHGVKPFQ GVKNNDVIGRIENGERLPMPPNCPPTLYSLMTKWAYDPSRRPRFTELK AQLSTILEEEKAQQEERMESRRQATVSWDSGGSDAPPKPSRPGYP SPRSSEGFYPSQHMVQTNHYQVSGYPGSHGITAMAGSIYPGQASLLD QTDSWNHRPQEIAMWQPNVEDSTVLDLRLGIGQVLPHTLMEERLIRQQQ EMEEDQRWLEKEERFLKPDVRLSRGSIDREDGSLQGPIGNQHIYQPVGK PDPAAPPKPPRPGAPGHLGSLASLSPADSYNEGVLKPKQEISPPPTAN LDRSNDKVVYENVTLGVKAVIEMSSKIQPAPPEEYVPMVKEVGLALRLLA TVDETIPLLPASTHREIEMAQKLLNSDLGELINKMKLAQQYVMTSLQQEYK KQMLTAAHALAVDAKNLLDVIDQARLKMGLGQTRRH
Host:	Rabbit
Reactivity:	Human
Quality Control Testing:	Antibody reactive against mammalian transfected lysate.
Storage Buffer:	In 1x PBS, pH 7.4
Storage Instruction:	Store at -20°C or lower. Aliquot to avoid repeated freezing and thawing.
MSDS:	 Download
Datasheet:	 Download

Applications

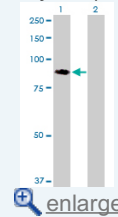
Western Blot (Transfected lysate)



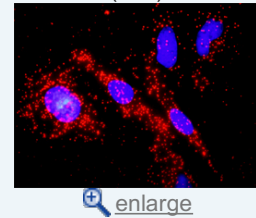
Western Blot analysis of PTK2 expression in transfected 293T cell line (H00005747-T01)

Application Image

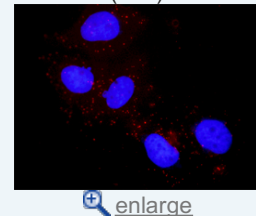
Western Blot (Transfected lysate)



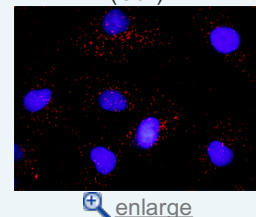
In situ Proximity Ligation Assay (Cell)



In situ Proximity Ligation Assay (Cell)



In situ Proximity Ligation Assay (Cell)



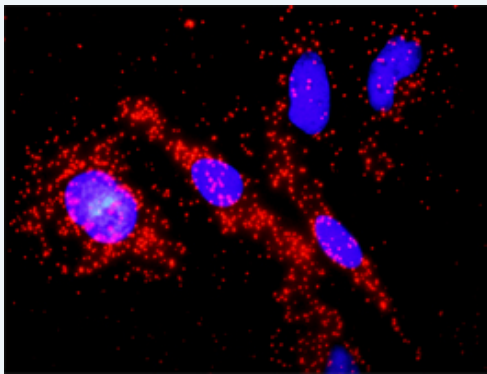
by PTK2 MaxPab polyclonal antibody.

Lane 1: PTK2 transfected lysate(76.90 KDa).

Lane 2: Non-transfected lysate.

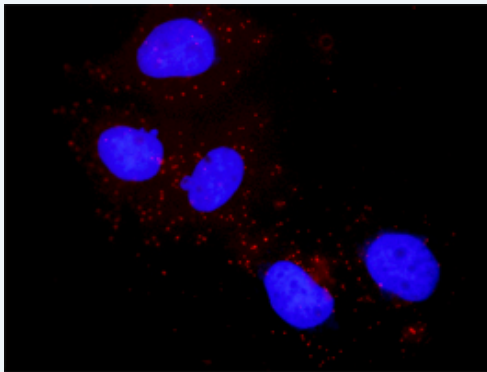
 [Protocol Download](#)

***In situ* Proximity Ligation Assay (Cell)**



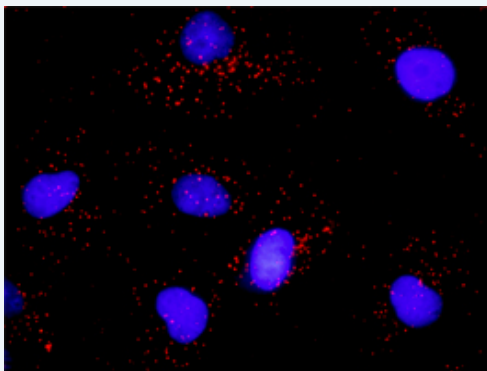
Proximity Ligation Analysis of protein-protein interactions between PTK2 and APC. HeLa cells were stained with anti-PTK2 rabbit purified polyclonal 1:1200 and anti-APC mouse monoclonal antibody 1:50. Each red dot represents the detection of protein-protein interaction complex, and nuclei were counterstained with DAPI (blue).

***In situ* Proximity Ligation Assay (Cell)**



Proximity Ligation Analysis of protein-protein interactions between PTK2 and FLT1. Huh7 cells were stained with anti-PTK2 rabbit purified polyclonal 1:1200 and anti-FLT1 mouse monoclonal antibody 1:50. Each red dot represents the detection of protein-protein interaction complex, and nuclei were counterstained with DAPI (blue).

***In situ* Proximity Ligation Assay (Cell)**



Proximity Ligation Analysis of protein-protein interactions between PTK2 and PLCG1. Mahlavu cells were stained with anti-PTK2 rabbit purified polyclonal 1:600 and anti-PLCG1 mouse monoclonal antibody 1:100. Each red dot represents the detection of protein-protein interaction complex, and nuclei were counterstained with DAPI (blue).

Gene Information

Entrez GeneID: [5747](#)

GeneBank [BC028733.2](#)

Accession#:

Protein [AAH28733.1](#)

Accession#:

Gene Name: PTK2

Gene Alias: FADK,FAK,FAK1,pp125FAK

Gene PTK2 protein tyrosine kinase 2

Description:

Omim ID: [600758](#)

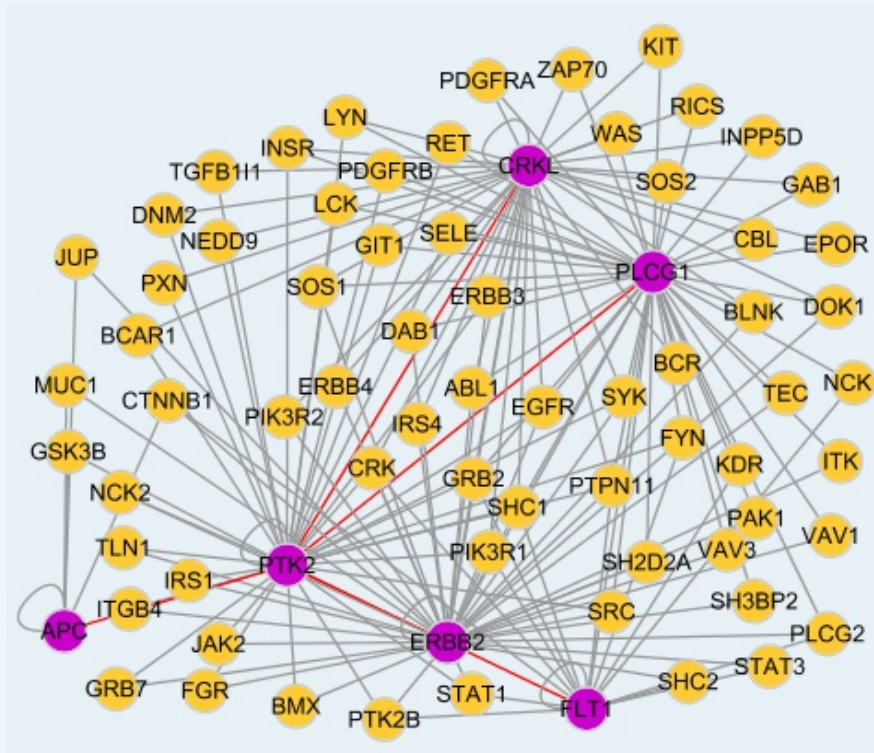
Gene Ontology: [Hyperlink](#)

Gene Summary: This gene encodes a cytoplasmic protein tyrosine kinase which is found concentrated in the focal adhesions that form between cells growing in the presence of extracellular matrix constituents. The encoded protein is a member of the FAK subfamily of protein tyrosine kinases but lacks significant sequence similarity to kinases from other subfamilies. Activation of this gene may be an important early step in cell growth and intracellular signal transduction pathways triggered in response to certain neural peptides or to cell interactions with the extracellular matrix. At least four transcript variants encoding four different isoforms have been found for this gene, but the full-length natures of only two of them have been determined. [provided by RefSeq]

Other focal adhesion kinase 1

Designations:

Interactome



Gene Pathway

[Axon guidance](#) [Chemokine signaling pathway](#) [ErbB signaling pathway](#) [Focal adhesion](#) [Leukocyte transendothelial migration](#) [Pathways in cancer](#) [Regulation of actin cytoskeleton](#) [Small cell lung cancer](#) [VEGF signaling pathway](#)

Related Disease

[Autistic Disorder](#) [Genetic Predisposition to Disease](#) [HIV Infections](#)
[Leukemia, chronic myeloid](#) [Leukemia, Myelogenous, Chronic, BCR-ABL Positive](#)

[服務條款](#) | [隱私權政策](#) | [著作及商標](#) | [網站地圖](#)

©2016 亞諾法生技股份有限公司 Abnova Corporation. 版權所有.