



# SZABO SCANDIC

Part of Europa Biosite

## Produktinformation



Forschungsprodukte & Biochemikalien



Zellkultur & Verbrauchsmaterial



Diagnostik & molekulare Diagnostik



Laborgeräte & Service

Weitere Information auf den folgenden Seiten!  
See the following pages for more information!



### Lieferung & Zahlungsart

siehe unsere [Liefer- und Versandbedingungen](#)

### Zuschläge

- Mindermengenzuschlag
- Trockeneiszuschlag
- Gefahrgutzuschlag
- Expressversand

### SZABO-SCANDIC HandelsgmbH

Quellenstraße 110, A-1100 Wien

T. +43(0)1 489 3961-0

F. +43(0)1 489 3961-7

[mail@szabo-scandic.com](mailto:mail@szabo-scandic.com)

[www.szabo-scandic.com](http://www.szabo-scandic.com)

[linkedin.com/company/szaboscandic](https://www.linkedin.com/company/szaboscandic) 


**PTPN1 MaxPab mouse polyclonal antibody (B01)** MaxPab®

Catalog # : H00005770-B01

規格 : [ 50 uL ]

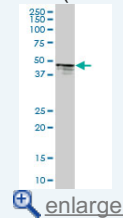
[List All](#)

**Specification**

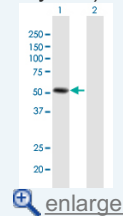
<b>Product Description:</b>	Mouse polyclonal antibody raised against a full-length human PTPN1 protein.
<b>Immunogen:</b>	PTPN1 (NP_002818.1, 1 a.a. ~ 435 a.a) full-length human protein.
<b>Sequence:</b>	MEMEKEFEQIDKSGSWAAIYQDIRHEASDFPCRVAKLPKNKNNRNRDVS SPFDHSRIKLHQEDNDYINASLIKMEEAQRSYILTQGPLPNTCGHFWEMV WEQKSRGVMLNRVMEKGLKCAQYWPQKEEKEMIFEDTNLKLTI SEDIKSYTYTVRQLELENLTTQETREILHFHYTTWPDFGVPE SPASFLNLFKVRRESGSLSPEHGPVVVHCSAGIGRSGTFCLADTCLLLMDK RKDPSSVDIKKVLLEMRFKRMGLIQTADQLRFSYLA VIEGAKFIMGDSSVQDQWKELSHEDLEPPPEH IPPPRPPKRILEPHNGKCREFFPNHQWVKEETQEDKDCPI KEEKGSPLNAAPYGIESMSQDTEVRSRVVGGSLRGAQA ASPAKGEPSLPEKDEDHALSYWKPFLVNM CVATVLTAGAYLCYRFLFNSNT
<b>Host:</b>	Mouse
<b>Reactivity:</b>	Human
<b>Quality Control Testing:</b>	Antibody reactive against mammalian transfected lysate.
<b>Storage Buffer:</b>	No additive
<b>Storage Instruction:</b>	Store at -20°C or lower. Aliquot to avoid repeated freezing and thawing.
<b>Note:</b>	For IHC and IF applications, antibody purification with Protein A will be needed prior to use.
<b>Datasheet:</b>	 <a href="#">Download</a>

**Application Image**

Western Blot (Tissue lysate)

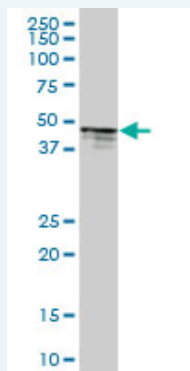


Western Blot (Transfected lysate)




**Applications**

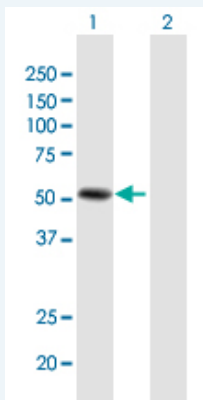
Western Blot (Tissue lysate)



PTPN1 MaxPab polyclonal antibody. Western Blot analysis of PTPN1 expression in human spleen.


 [Protocol Download](#)

Western Blot (Transfected lysate)



Western Blot analysis of PTPN1 expression in transfected 293T cell line ([H00005770-T01](#)) by PTPN1 MaxPab polyclonal antibody.

Lane 1: PTPN1 transfected lysate(47.85 KDa).  
Lane 2: Non-transfected lysate.

 [Protocol Download](#)

## Gene Information

**Entrez GeneID:** [5770](#)

**GeneBank Accession#:** [NM\\_002827.2](#)

**Protein Accession#:** [NP\\_002818.1](#)

**Gene Name:** PTPN1

**Gene Alias:** PTP1B

**Gene Description:** protein tyrosine phosphatase, non-receptor type 1

**Omim ID:** [176885](#), [609830](#)

**Gene Ontology:** [Hyperlink](#)

**Gene Summary:** The protein encoded by this gene is the founding member of the protein tyrosine phosphatase (PTP) family, which was isolated and identified based on its enzymatic activity and amino acid sequence. PTPs catalyze the hydrolysis of the phosphate monoesters specifically on tyrosine residues. Members of the PTP family share a highly conserved catalytic motif, which is essential for the catalytic activity. PTPs are known to be signaling molecules that regulate a variety of cellular processes including cell growth, differentiation, mitotic cycle, and oncogenic transformation. This PTP has been shown to act as a negative regulator of insulin signaling by dephosphorylating the phosphotyrosine residues of insulin receptor kinase. This PTP was also reported to dephosphorylate epidermal growth factor receptor kinase, as well as JAK2 and TYK2 kinases, which implicated the role of this PTP in cell growth control, and cell response to interferon stimulation. [provided by RefSeq]

**Other Designations:** OTTHUMP00000031266,non-receptor tyrosine phosphatase 1,protein tyrosine phosphatase 1B,protein tyrosine phosphatase, placental

## Gene Pathway

[Adherens junction](#) [Insulin signaling pathway](#)

## Related Disease

[Albuminuria](#) [Alzheimer Disease](#) [Alzheimer disease](#) [Arteriosclerosis](#) [Atherosclerosis](#)

[Atherosclerosis](#) [Atrophy](#) [Calcinosis](#) [Cardiomyopathy, Hypertrophic](#)  
[Cardiovascular Diseases](#) [Cerebrovascular Disorders](#) [Coronary Artery Disease](#)  
[Coronary Disease](#) [Diabetes Complications](#) [Diabetes Mellitus](#) [Diabetes Mellitus, Type 2](#)  
[Diabetic Angiopathies](#) [Diabetic Retinopathy](#) [Dyslipidemias](#)

**... see more**

---

[服務條款](#) | [隱私權政策](#) | [著作及商標](#) | [網站地圖](#)

©2016 亞諾法生技股份有限公司 Abnova Corporation. 版權所有.