



# SZABO SCANDIC

Part of Europa Biosite

## Produktinformation



Forschungsprodukte & Biochemikalien



Zellkultur & Verbrauchsmaterial



Diagnostik & molekulare Diagnostik



Laborgeräte & Service

Weitere Information auf den folgenden Seiten!  
See the following pages for more information!



### Lieferung & Zahlungsart

siehe unsere [Liefer- und Versandbedingungen](#)

### Zuschläge

- Mindermengenzuschlag
- Trockeneiszuschlag
- Gefahrgutzuschlag
- Expressversand

### SZABO-SCANDIC HandelsgmbH

Quellenstraße 110, A-1100 Wien

T. +43(0)1 489 3961-0

F. +43(0)1 489 3961-7

[mail@szabo-scandic.com](mailto:mail@szabo-scandic.com)

[www.szabo-scandic.com](http://www.szabo-scandic.com)

[linkedin.com/company/szaboscandic](https://www.linkedin.com/company/szaboscandic) 



**PTPN2 purified MaxPab mouse polyclonal antibody (B01P)** MaxPab®

Catalog # : H00005771-B01P

規格 : [ 50 ug ]

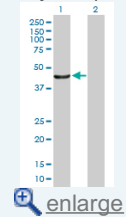
[List All](#)

**Specification**

<b>Product Description:</b>	Mouse polyclonal antibody raised against a full-length human PTPN2 protein.
<b>Immunogen:</b>	PTPN2 (NP_536347.1, 1 a.a. ~ 387 a.a) full-length human protein.
<b>Sequence:</b>	MPTTIEREFEELDTQRRWQPLYLEIRNESHDPHRVAKFPENRRNRNRYR DVSPYDHSRVKLNQNAENDYINASLVDIEEAQRSYILTQGPLPNTCCHFVW MVWQQKTKAVVMLNRIVEKESVKCAQYWPTDDQEMLFKETGFSVKLLS EDVKSYYTVHLLQLENINSGETRTISHFYHTTWPDFGVPEPASFLNFLF KVRESGLNPDHGPVAVIHCSAGIGRSGTFSLVDTCLVLMKGGDDINIKQVL LNMRYRMGLIQTPDQLRFSYMAIEGAKCIKGDSSIQRWKEKSKEDLSP AFDHSPNKIMTEKYNGNRIGLEEEKLTGDRCTGLSSKMQDTMEENSESA LRKRIREDRKATTAQKVQMKQRLNENERKRKRPRLTDT
<b>Host:</b>	Mouse
<b>Reactivity:</b>	Human
<b>Quality Control Testing:</b>	Antibody reactive against mammalian transfected lysate.
<b>Storage Buffer:</b>	In 1x PBS, pH 7.4
<b>Storage Instruction:</b>	Store at -20°C or lower. Aliquot to avoid repeated freezing and thawing.
<b>MSDS:</b>	 <a href="#">Download</a>
<b>Datasheet:</b>	 <a href="#">Download</a>

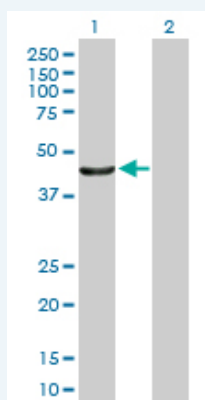
**Application Image**

Western Blot (Transfected lysate)



**Applications**

**Western Blot (Transfected lysate)**



Western Blot analysis of PTPN2 expression in transfected 293T cell line ([H00005771-T01](#)) by PTPN2 MaxPab polyclonal antibody.

Lane 1: PTPN2 transfected lysate(42.57 KDa).  
Lane 2: Non-transfected lysate.

 [Protocol Download](#)

## Gene Information

---

**Entrez GeneID:** [5771](#)

---

**GeneBank Accession#:** [NM\\_080422.1](#)

---

**Protein Accession#:** [NP\\_536347.1](#)

---

**Gene Name:** PTPN2

---

**Gene Alias:** PTPT,TC-PTP,TCELLPTP,TCPTP

---

**Gene Description:** protein tyrosine phosphatase, non-receptor type 2

---

**Omim ID:** [176887](#)

---

**Gene Ontology:** [Hyperlink](#)

---

**Gene Summary:** The protein encoded by this gene is a member of the protein tyrosine phosphatase (PTP) family. Members of the PTP family share a highly conserved catalytic motif, which is essential for the catalytic activity. PTPs are known to be signaling molecules that regulate a variety of cellular processes including cell growth, differentiation, mitotic cycle, and oncogenic transformation. Epidermal growth factor receptor and the adaptor protein Shc were reported to be substrates of this PTP, which suggested the roles in growth factor mediated cell signaling. Three alternatively spliced variants of this gene, which encode isoforms differing at their extreme C-termini, have been described. The different C-termini are thought to determine the substrate specificity, as well as the cellular localization of the isoforms. Two highly related but distinctly processed pseudogenes that localize to distinct chromosomes have been reported. [provided by RefSeq]

---

**Other Designations:** T-cell protein tyrosine phosphatase

---

## Related Disease

---

[Addison Disease](#) [Arthritis](#) [Arthritis, Juvenile Rheumatoid](#) [Arthritis, Rheumatoid](#) [Autoimmune Diseases](#) [Carcinoma](#) [Celiac Disease](#) [Colitis](#) [Ulcerative Crohn Disease](#) [Crohn's disease](#) [Diabetes Mellitus, Type 1](#) [Diabetes Mellitus, Type 2](#) [Disease Progression](#) [Disease Susceptibility](#) [Genetic Predisposition to Disease](#) [Ileal Diseases](#) [Inflammatory Bowel Diseases](#) [Lupus Erythematosus](#) [Systemic Prostatic Neoplasms](#)

... see more