



SZABO SCANDIC

Part of Europa Biosite

Produktinformation



Forschungsprodukte & Biochemikalien



Zellkultur & Verbrauchsmaterial



Diagnostik & molekulare Diagnostik



Laborgeräte & Service

Weitere Information auf den folgenden Seiten!
See the following pages for more information!



Lieferung & Zahlungsart

siehe unsere [Liefer- und Versandbedingungen](#)

Zuschläge

- Mindermengenzuschlag
- Trockeneiszuschlag
- Gefahrgutzuschlag
- Expressversand

SZABO-SCANDIC HandelsgmbH

Quellenstraße 110, A-1100 Wien

T. +43(0)1 489 3961-0

F. +43(0)1 489 3961-7

mail@szabo-scandic.com

www.szabo-scandic.com

[linkedin.com/company/szaboscandic](https://www.linkedin.com/company/szaboscandic) 

PTPRE monoclonal antibody (M04), clone 2D10

Catalog # : H00005791-M04

規格 : [100 ug]

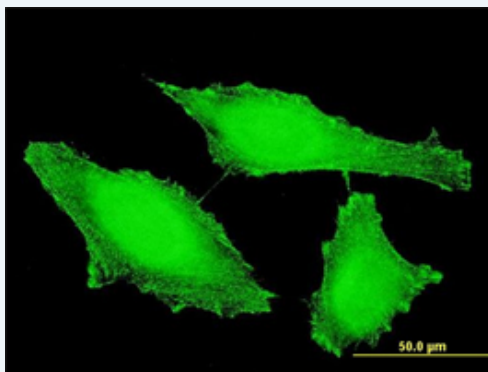
[List All](#)

Specification

Product Description:	Mouse monoclonal antibody raised against a partial recombinant PTPRE.
Immunogen:	PTPRE (AAH50062, 511 a.a. ~ 600 a.a) partial recombinant protein with GST tag. MW of the GST tag alone is 26 KDa.
Sequence:	WRMIWEWKSHTIVMLTEVQEREQDKCYQYWPTEGSVTHGEITIEIKNDTL SEASIRDFLVTLNQPQARQEEQVRVVRQFHFHGWPEIGI
Host:	Mouse
Reactivity:	Human
Isotype:	IgG2a Kappa
Quality Control Testing:	Antibody Reactive Against Recombinant Protein.
Storage Buffer:	In 1x PBS, pH 7.4
Storage Instruction:	Store at -20°C or lower. Aliquot to avoid repeated freezing and thawing.
MSDS:	Download
Datasheet:	Download

Applications

Immunofluorescence



[enlarge this image](#)

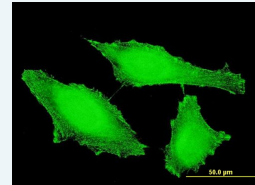
Immunofluorescence of monoclonal antibody to PTPRE on HeLa cell . [antibody concentration 10 ug/ml]

[Protocol Download](#)

Sandwich ELISA (Recombinant protein)

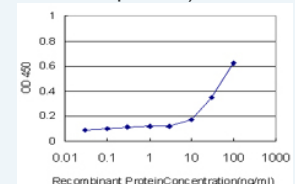
Application Image

Immunofluorescence



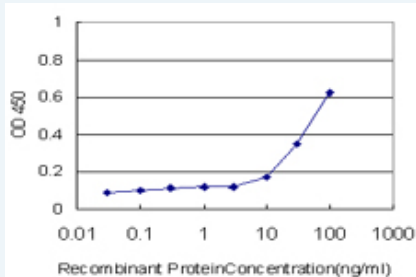
[enlarge](#)

Sandwich ELISA (Recombinant protein)




[enlarge](#)

ELISA



Detection limit for recombinant GST tagged PTPRE is approximately 10ng/ml as a capture antibody.

 [Protocol Download](#)

ELISA

Gene Information

Entrez GeneID: [5791](#)

GeneBank [BC050062](#)

Accession#:

Protein [AAH50062](#)

Accession#:

Gene Name: PTPRE

Gene Alias: DKFZp313F1310, FLJ57799, FLJ58245, HPTPE, PTPE, R-PTP-EPSILON

Gene Description: protein tyrosine phosphatase, receptor type, E

Omim ID: [600926](#)

Gene Ontology: [Hyperlink](#)

Gene Summary: The protein encoded by this gene is a member of the protein tyrosine phosphatase (PTP) family. PTPs are known to be signaling molecules that regulate a variety of cellular processes including cell growth, differentiation, mitotic cycle, and oncogenic transformation. Two alternatively spliced transcript variants of this gene have been reported, one of which encodes a receptor-type PTP that possesses a short extracellular domain, a single transmembrane region, and two tandem intracytoplasmic catalytic domains; Another one encodes a PTP that contains a distinct hydrophilic N-terminus, and thus represents a nonreceptor-type isoform of this PTP. Studies of the similar gene in mice suggested the regulatory roles of this PTP in RAS related signal transduction pathways, cytokines induced SATA signaling, as well as the activation of voltage-gated K⁺ channels. [provided by RefSeq]

Other Designations: OTTHUMP00000020735, OTTHUMP00000020736, protein tyrosine phosphatase epsilon, protein tyrosine phosphatase, receptor type, epsilon polypeptide

Related Disease

[Alzheimer Disease](#) [Asthma](#) [Asthma Genetic Predisposition to Disease](#) [Hypersensitivity Tobacco Use Disorder](#)