



SZABO SCANDIC

Part of Europa Biosite

Produktinformation



Forschungsprodukte & Biochemikalien



Zellkultur & Verbrauchsmaterial



Diagnostik & molekulare Diagnostik



Laborgeräte & Service

Weitere Information auf den folgenden Seiten!
See the following pages for more information!



Lieferung & Zahlungsart

siehe unsere [Liefer- und Versandbedingungen](#)

Zuschläge

- Mindermengenzuschlag
- Trockeneiszuschlag
- Gefahrgutzuschlag
- Expressversand

SZABO-SCANDIC HandelsgmbH

Quellenstraße 110, A-1100 Wien

T. +43(0)1 489 3961-0

F. +43(0)1 489 3961-7

mail@szabo-scandic.com

www.szabo-scandic.com

[linkedin.com/company/szaboscandic](https://www.linkedin.com/company/szaboscandic) 

PTPRF polyclonal antibody (A01)

Catalog # : H00005792-A01

規格 : [50 uL]

List All

Specification

Product Description: Mouse polyclonal antibody raised against a partial recombinant PTPRF.

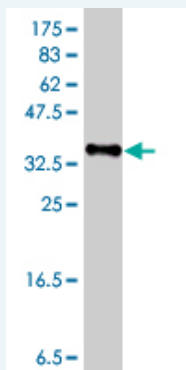
Immunogen: PTPRF (NP_002831, 1788 a.a. ~ 1897 a.a) partial recombinant protein with GST tag.

Sequence: FQFTDWPEQGVPKTGEGFIDFIGVHKTKEQFGQDGPITVHCSAGVGR
TGVFITLSIVLERMRYEGVDMFQTVKTLRTQRPAMVQTEDQYQLCYRA
ALEYLGSFDHYAT

Host: Mouse

Reactivity: Human

Quality Control Testing: Antibody Reactive Against Recombinant Protein.



Western Blot detection against Immunogen (38.21 KDa) .

Storage Buffer: 50 % glycerol

Storage Instruction: Store at -20°C or lower. Aliquot to avoid repeated freezing and thawing.

MSDS: [Download](#)

Datasheet: [Download](#)

Applications

Western Blot (Recombinant protein)

[Protocol Download](#)

ELISA

Gene Information

Entrez GeneID: [5792](#)

GeneBank Accession#: [NM_002840](#)

Application Image

Western Blot (Recombinant protein)

ELISA

Protein Accession#: [NP_002831](#)

Gene Name: PTPRF

Gene Alias: FLJ43335,FLJ45062,FLJ45567,LAR

Gene Description: protein tyrosine phosphatase, receptor type, F

Omim ID: [179590](#)

Gene Ontology: [Hyperlink](#)

Gene Summary: The protein encoded by this gene is a member of the protein tyrosine phosphatase (PTP) family. PTPs are known to be signaling molecules that regulate a variety of cellular processes including cell growth, differentiation, mitotic cycle, and oncogenic transformation. This PTP possesses an extracellular region, a single transmembrane region, and two tandem intracytoplasmic catalytic domains, and thus represents a receptor-type PTP. The extracellular region contains three Ig-like domains, and nine non-Ig like domains similar to that of neural-cell adhesion molecule. This PTP was shown to function in the regulation of epithelial cell-cell contacts at adherens junctions, as well as in the control of beta-catenin signaling. An increased expression level of this protein was found in the insulin-responsive tissue of obese, insulin-resistant individuals, and may contribute to the pathogenesis of insulin resistance. Two alternatively spliced transcript variants of this gene, which encode distinct proteins, have been reported. [provided by RefSeq]

Other Designations: LCA-homolog,OTTHUMP00000008684,leukocyte antigen-related (LAR) PTP receptor,leukocyte antigen-related tyrosine phosphatase,protein tyrosine phosphatase, receptor type, F polypeptide,receptor-linked protein-tyrosine phosphatase LAR

Gene Pathway

[Adherens junction](#) [Cell adhesion molecules \(CAMs\)](#) [Insulin signaling pathway](#)

Related Disease

[Diabetes Mellitus, Type 2](#) [Insulin Resistance](#) [Obesity](#) [Obesity](#)