



SZABO SCANDIC

Part of Europa Biosite

Produktinformation



Forschungsprodukte & Biochemikalien



Zellkultur & Verbrauchsmaterial



Diagnostik & molekulare Diagnostik



Laborgeräte & Service

Weitere Information auf den folgenden Seiten!
See the following pages for more information!



Lieferung & Zahlungsart

siehe unsere [Liefer- und Versandbedingungen](#)

Zuschläge

- Mindermengenzuschlag
- Trockeneiszuschlag
- Gefahrgutzuschlag
- Expressversand

SZABO-SCANDIC HandelsgmbH

Quellenstraße 110, A-1100 Wien

T. +43(0)1 489 3961-0

F. +43(0)1 489 3961-7

mail@szabo-scandic.com

www.szabo-scandic.com

[linkedin.com/company/szaboscandic](https://www.linkedin.com/company/szaboscandic) 

PTPRF 293T Cell Transient Overexpression Lysate(Denatured)

Catalog # : H00005792-T01

規格 : [100 uL]

[List All](#)

Specification

Transfected Cell Line: 293T

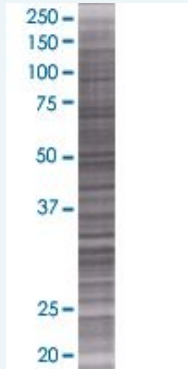
Plasmid: pCMV-PTPRF full-length

Host: Human

Theoretical MW (kDa): 38.94

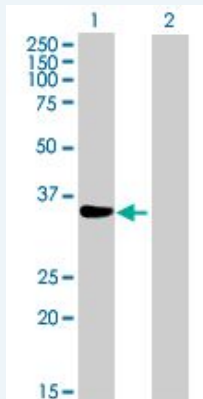
Quality Control Testing: Transient overexpression cell lysate was tested with Anti-PTPRF antibody ([H00005792-B01](#)) by Western Blots.

SDS-PAGE Gel



PTPRF transfected lysate.

Western Blot



Lane 1: PTPRF transfected lysate (38.94 KDa)

Lane 2: Non-transfected lysate.

Storage Buffer: 1X Sample Buffer (50 mM Tris-HCl, 2% SDS, 10% glycerol, 300 mM 2-mercaptoethanol, 0.01% Bromophenol blue)

Storage Instruction: Store at -80°C. Aliquot to avoid repeated freezing and thawing.

MSDS:  [Download](#)

Applications

Western Blot

Gene Information

Entrez GeneID: [5792](#)

GeneBank Accession#: [ENST00000333953](#)

Protein Accession#: [ENSP00000361488](#)

Gene Name: PTPRF

Gene Alias: FLJ43335,FLJ45062,FLJ45567,LAR

Gene Description: protein tyrosine phosphatase, receptor type, F

Omim ID: [179590](#)

Gene Ontology: [Hyperlink](#)

Gene Summary: The protein encoded by this gene is a member of the protein tyrosine phosphatase (PTP) family. PTPs are known to be signaling molecules that regulate a variety of cellular processes including cell growth, differentiation, mitotic cycle, and oncogenic transformation. This PTP possesses an extracellular region, a single transmembrane region, and two tandem intracytoplasmic catalytic domains, and thus represents a receptor-type PTP. The extracellular region contains three Ig-like domains, and nine non-Ig like domains similar to that of neural-cell adhesion molecule. This PTP was shown to function in the regulation of epithelial cell-cell contacts at adherens junctions, as well as in the control of beta-catenin signaling. An increased expression level of this protein was found in the insulin-responsive tissue of obese, insulin-resistant individuals, and may contribute to the pathogenesis of insulin resistance. Two alternatively spliced transcript variants of this gene, which encode distinct proteins, have been reported. [provided by RefSeq]

Other Designations: LCA-homolog,OTTHUMP00000008684,leukocyte antigen-related (LAR) PTP receptor,leukocyte antigen-related tyrosine phosphatase,protein tyrosine phosphatase, receptor type, F polypeptide,receptor-linked protein-tyrosine phosphatase LAR

Gene Pathway

[Adherens junction](#) [Cell adhesion molecules \(CAMs\)](#) [Insulin signaling pathway](#)

Related Disease

[Diabetes Mellitus, Type 2](#) [Insulin Resistance](#) [Obesity](#) [Obesity](#)