



SZABO SCANDIC

Part of Europa Biosite

Produktinformation



Forschungsprodukte & Biochemikalien



Zellkultur & Verbrauchsmaterial



Diagnostik & molekulare Diagnostik



Laborgeräte & Service

Weitere Information auf den folgenden Seiten!
See the following pages for more information!



Lieferung & Zahlungsart

siehe unsere [Liefer- und Versandbedingungen](#)

Zuschläge

- Mindermengenzuschlag
- Trockeneiszuschlag
- Gefahrgutzuschlag
- Expressversand

SZABO-SCANDIC HandelsgmbH

Quellenstraße 110, A-1100 Wien

T. +43(0)1 489 3961-0

F. +43(0)1 489 3961-7

mail@szabo-scandic.com

www.szabo-scandic.com

[linkedin.com/company/szaboscandic](https://www.linkedin.com/company/szaboscandic) 

PTPRJ monoclonal antibody (M01), clone 6G11

Catalog # : H00005795-M01

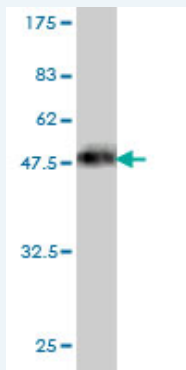
規格 : [100 ug]

[List All](#)

Specification

Product Description:	Mouse monoclonal antibody raised against a partial recombinant PTPRJ.
Immunogen:	PTPRJ (NP_002834.2, 38 a.a. ~ 137 a.a) partial recombinant protein with GST tag. MW of the GST tag alone is 26 KDa.
Sequence:	GTPSPIPDPSVATVATGENGITQISSTAESFHKQNGTGTPQVETNTSEDG ESSGANDSLRTPEQGSNGTDGASQKTPSSTGPSPVFDIKAVSISPTNVIL
Host:	Mouse
Reactivity:	Human
Isotype:	IgG2a Kappa

Quality Control Testing: Antibody Reactive Against Recombinant Protein.



Western Blot detection against Immunogen (36.74 KDa) .

Storage Buffer: In 1x PBS, pH 7.4

Storage Instruction: Store at -20°C or lower. Aliquot to avoid repeated freezing and thawing.

MSDS: [Download](#)

Datasheet: [Download](#)

Applications

Western Blot (Recombinant protein)

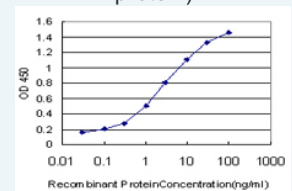
[Protocol Download](#)

Sandwich ELISA (Recombinant protein)

Application Image

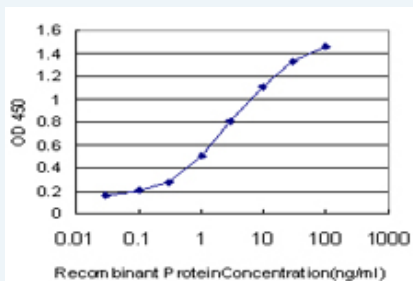
Western Blot (Recombinant protein)

Sandwich ELISA (Recombinant protein)



[enlarge](#)

ELISA



Detection limit for recombinant GST tagged PTPRJ is approximately 0.03ng/ml as a capture antibody.

Protocol Download

ELISA

Gene Information

Entrez GeneID: [5795](#)

GeneBank [NM_002843](#)

Accession#:

Protein [NP_002834.2](#)

Accession#:

Gene Name: PTPRJ

Gene Alias: CD148,DEP1,HPTPeta,R-PTP-ETA,SCC1

Gene Description: protein tyrosine phosphatase, receptor type, J

Omim ID: [114500](#), [600925](#)

Gene Ontology: [Hyperlink](#)

Gene Summary: The protein encoded by this gene is a member of the protein tyrosine phosphatase (PTP) family. PTPs are known to be signaling molecules that regulate a variety of cellular processes, including cell growth, differentiation, mitotic cycle, and oncogenic transformation. This PTP possesses an extracellular region containing five fibronectin type III repeats, a single transmembrane region, and a single intracytoplasmic catalytic domain, and thus represents a receptor-type PTP. This protein is present in all hematopoietic lineages, and was shown to negatively regulate T cell receptor signaling possibly through interfering with the phosphorylation of Phospholipase C Gamma 1 and Linker for Activation of T Cells. This protein can also dephosphorylate the PDGF beta receptor, and may be involved in UV-induced signal transduction. Multiple transcript variants encoding different isoforms have been found for this gene. [provided by RefSeq]

Other Designations: CD148 antigen,human density enhanced phosphatase-1,protein tyrosine phosphatase, receptor type, J polypeptide,receptor-type tyrosine-protein phosphatase eta,susceptibility to colon cancer 1, mouse, homolog of

Gene Pathway

[Adherens junction](#)

Related Disease

[Adenoma](#) [Breast cancer](#) [Breast Neoplasms](#) [Carcinoma](#) [Cell Transformation, Neoplastic](#) [Colon cancer](#) [Colonic Neoplasms](#) [Colorectal Neoplasms](#) [Esophageal Neoplasms](#) [Genetic Predisposition to Disease](#) [Head and Neck Neoplasms](#) [Kidney Failure, Chronic](#) [Lung Neoplasms](#) [Neoplasm Invasiveness](#) [Neoplasms](#) [Thyroid Neoplasms](#) [Tobacco Use Disorder](#)

[服務條款](#) | [隱私權政策](#) | [著作及商標](#) | [網站地圖](#)

©2016 亞諾法生技股份有限公司 Abnova Corporation. 版權所有.