



# SZABO SCANDIC

Part of Europa Biosite

## Produktinformation



Forschungsprodukte & Biochemikalien



Zellkultur & Verbrauchsmaterial



Diagnostik & molekulare Diagnostik



Laborgeräte & Service

Weitere Information auf den folgenden Seiten!  
See the following pages for more information!



### Lieferung & Zahlungsart

siehe unsere [Liefer- und Versandbedingungen](#)

### Zuschläge

- Mindermengenzuschlag
- Trockeneiszuschlag
- Gefahrgutzuschlag
- Expressversand

### SZABO-SCANDIC HandelsgmbH

Quellenstraße 110, A-1100 Wien

T. +43(0)1 489 3961-0

F. +43(0)1 489 3961-7

[mail@szabo-scandic.com](mailto:mail@szabo-scandic.com)

[www.szabo-scandic.com](http://www.szabo-scandic.com)

[linkedin.com/company/szaboscandic](https://www.linkedin.com/company/szaboscandic) 

**PTPRN purified MaxPab rabbit polyclonal antibody (D01P)** MaxPab®

Catalog # : H00005798-D01P

規格 : [ 100 ug ]

[List All](#)

**Specification**

**Product Description:** Rabbit polyclonal antibody raised against a full-length human PTPRN protein.

**Immunogen:** PTPRN (AAH70053.1, 1 a.a. ~ 950 a.a) full-length human protein.

**Sequence:**  
MRRPRRPGGLGGSGGLRLLCLLLLSSRPGGCSAVSAHGCLFDRRLC  
SHLEVCIQDGLFGQCQVGVGQARPLLQVTSPVLQRLQGVLRLMSQG  
LSWHDDLTYVISQEMERIPRLRPPEPRPRDRSGLAPKRPGPAGELLQ  
DIPTGSAPAAQHRLPQPPVGKGGAGASSLSPLQAELLPLLEHLLPPQ  
PPHPSLSYEPALLQPYLFHQFGSRDGSRVSEGSPGMVSVGPLKAEAP  
ALFSRTASKGIFGDHPGHSYGDLPGPSPAQLFQDSGLLYLAQELPAPSR  
ARVPRLPEQGSSSRAEDSPEGYEKEGLGDRGEKPASPAVQPDALQRL  
AAVLAGYGVELRQLTPEQLSTLLTLLQLLPGAGRNPGGVVNVGADIKK  
TMEGPVEGRDTELAPARTSPMPGHPTASPTSSEVQQVPSVVSSEPPKA  
ARPPVTPVLLLEKKSPLGQSQPTVAGQPSARPAEEYGYIVTDQNMVGP  
LTFRIRHNEQNLADVTQQAGLVKSELEAQTGLQILQTVGVQREAAAA  
VLPQTAHSTSPMRSVLLTLVALAGVAGLLVALAVLCVRQHARQQDKER  
LAALGPEGAHGDTTFEYQDLCRQHMAKSLFNRAEGPPEPSRVSSVSS  
QFSDAAQASPSSHSSTPSWCEEPAQANMDISTGHMILAYMEDHLRNRDR  
LAKEWQALCAYQAEPNTCATAQGEKNIKRNHPDFLPYDHARIKLVVSS  
PSRSDYINASPIIHDPRMPAYIATQGPLSHTIADFQMWVWESGCTVIVML  
TPLVEDGVKQCDRYWPDEGASLYHVYEVNLVSEHIWCEDFLVRSFYLN  
VQTQETRTLQFHFLSWPAEGTPASTRPLLDFFRRKVNKCYRGRSCPIV  
HCSDGAGRTGTYLIDMVLNRMAGVKEIDIAATLEHVRDQRPGLVRSKD  
QFEFALTAVAEVNAIKALPQ

**Host:** Rabbit

**Reactivity:** Human

**Quality Control Testing:** Antibody reactive against mammalian transfected lysate.

**Storage Buffer:** In 1x PBS, pH 7.4

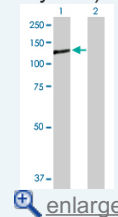
**Storage Instruction:** Store at -20°C or lower. Aliquot to avoid repeated freezing and thawing.


**MSDS:**  [Download](#)

**Datasheet:**  [Download](#)

**Application Image**

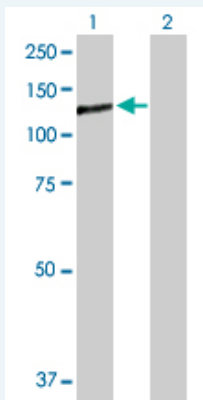
Western Blot (Transfected lysate)



 [enlarge](#)

**Applications**

**Western Blot (Transfected lysate)**



Western Blot analysis of PTPRN expression in transfected 293T cell line ([H00005798-T03](#)) by PTPRN MaxPab polyclonal antibody.

Lane 1: PTPRN transfected lysate(102.80 KDa).  
Lane 2: Non-transfected lysate.

 [Protocol Download](#)

## Gene Information

**Entrez GeneID:** [5798](#)

**GeneBank Accession#:** [BC070053](#)

**Protein Accession#:** [AAH70053.1](#)

**Gene Name:** PTPRN

**Gene Alias:** FLJ16131,IA-2,IA-2/PTP,IA2,ICA512,R-PTP-N

**Gene Description:** protein tyrosine phosphatase, receptor type, N

**Omim ID:** [601773](#)

**Gene Ontology:** [Hyperlink](#)

**Gene Summary:** The protein encoded by this gene is a member of the protein tyrosine phosphatase (PTP) family. PTPs are known to be signaling molecules that regulate a variety of cellular processes including cell growth, differentiation, mitotic cycle, and oncogenic transformation. This PTP possesses an extracellular region, a single transmembrane region, and a single catalytic domain, and thus represents a receptor-type PTP. This PTP was found to be an autoantigen that is reactive with insulin-dependent diabetes mellitus (IDDM) patient sera, and thus may be a potential target of autoimmunity in diabetes mellitus. [provided by RefSeq]

**Other Designations:** islet cell antigen 2,islet cell antigen 512,islet cell autoantigen 3,protein tyrosine phosphatase-like N

## Gene Pathway

[Type I diabetes mellitus](#)

## Related Disease

[Diabetes Mellitus, Type 1](#)

