



# SZABO SCANDIC

Part of Europa Biosite

## Produktinformation



Forschungsprodukte & Biochemikalien



Zellkultur & Verbrauchsmaterial



Diagnostik & molekulare Diagnostik



Laborgeräte & Service

Weitere Information auf den folgenden Seiten!  
See the following pages for more information!



### Lieferung & Zahlungsart

siehe unsere [Liefer- und Versandbedingungen](#)

### Zuschläge

- Mindermengenzuschlag
- Trockeneiszuschlag
- Gefahrgutzuschlag
- Expressversand

### SZABO-SCANDIC HandelsgmbH

Quellenstraße 110, A-1100 Wien

T. +43(0)1 489 3961-0

F. +43(0)1 489 3961-7

[mail@szabo-scandic.com](mailto:mail@szabo-scandic.com)

[www.szabo-scandic.com](http://www.szabo-scandic.com)

[linkedin.com/company/szaboscandic](https://www.linkedin.com/company/szaboscandic) 

**PTPRN2 purified MaxPab rabbit polyclonal antibody (D01P)** MaxPab®

Catalog # : H00005799-D01P

規格 : [ 100 ug ]

[List All](#)

**Specification**

**Product Description:** Rabbit polyclonal antibody raised against a full-length human PTPRN2 protein.

**Immunogen:** PTPRN2 (NP\_570858.1, 1 a.a. ~ 986 a.a) full-length human protein.

**Sequence:**  
 MGPPLPLLLLLLLLLPPRVLPAPSSVPRGRQLPGRLGCLLEEGLCGAS  
 EACVNDGVFGRCQKVPAMDFYRYEVSPVALQRLRVALQKLSGTGFTW  
 QDDYTQYVMDQELADLPKTYLRRPEASSPARPSKHSVGSERRYSREGG  
 AALANALRRHLPFLLEALSQAPASDVLARTHTAQDRPPAEGDDRFSESILT  
 YVAHTSALTYPPGPRTQLREDLLPRTLGGQLQPDDELSPKVDSGVDRHHL  
 MAALSAYAAQRPPAPPGEGLSLEPQYLLRAPSMPRPLAPAAPQKWPS  
 PLGDESDPSSTGDGARIHTLLKDLQRQPAEVRGLSGLELDGMAELMAG  
 LMQGVDHGVARGSPGRAALGESGEQADGPKATLRGDSFPDDGVQDD  
 DDRLYQEVHRLSATLGGLLQDHGSRLPGALPFARPLDMERKKSEHPE  
 SLSSEEETAGVENMKSQTYSKDLLGQQPHSEPGAAAFGELQNQMPGP  
 SKEEQSLPAGAQEALSDGLQLEVQPSEEEARGYIVTDREVLGPAVTFKV  
 SANVQNVTTEDVEKATVDNKKLEETSGLKILQTVGSGSKLKFLLPPQAE  
 QEDSTKFIALTLVSLACILGVLLASGLIYCLRHSSQHRLEKLSGLGGDPG  
 ADATAAYQELCRQRMATRPDRPEGPHTSRISSVSSQFSDGPIPSARSAR  
 SSASSWSEEPVQSNMDISTGHMILSYMEDHLKNKNRLEKEWEALCAYQA  
 EPNSSFVAQREEN/PKNRSLAVLTYDHSRVLLKAENSHSHSDYINASPIMD  
 HDPRNPAYIATQGPLPATVADFQMMVWESGCVVIMLTPLAENGVRQC  
 YHYWPDEGSNLYHIYEVNLVSEHIWCEDFLVRSFYLNKLTNETRTVTQF  
 HFLSWYDRGVPSSSRLLDFRRKVNKCYRGRSCPIVHCSDGAGRSGTY  
 VLIDMVLNKAKEIDIAATLEHLRDRQPGMVQTKAQEFALTAVAAEE  
 VNAILKALPQ

**Host:** Rabbit

**Reactivity:** Human

**Quality Control Testing:** Antibody reactive against mammalian transfected lysate.

**Storage Buffer:** In 1x PBS, pH 7.4

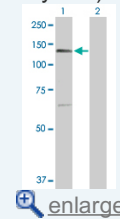
**Storage Instruction:** Store at -20°C or lower. Aliquot to avoid repeated freezing and thawing.

**MSDS:**  [Download](#)

**Datasheet:**  [Download](#)

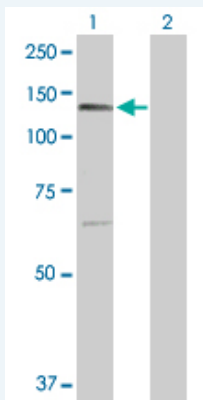
**Application Image**

Western Blot (Transfected lysate)




**Applications**

Western Blot (Transfected lysate)



Western Blot analysis of PTPRN2 expression in transfected 293T cell line ([H00005799-T04](#)) by PTPRN2 MaxPab polyclonal antibody.

Lane 1: PTPRN2 transfected lysate(108.10 KDa).  
Lane 2: Non-transfected lysate.

 [Protocol Download](#)

## Gene Information

**Entrez GeneID:** [5799](#)

**GeneBank Accession#:** [NM\\_130843](#)

**Protein Accession#:** [NP\\_570858.1](#)

**Gene Name:** PTPRN2

**Gene Alias:** IA-2beta, IAR, ICAAR, PTPRP

**Gene Description:** protein tyrosine phosphatase, receptor type, N polypeptide 2

**Omim ID:** [601698](#)

**Gene Ontology:** [Hyperlink](#)

**Gene Summary:** The protein encoded by this gene is a member of the protein tyrosine phosphatase (PTP) family. PTPs are known to be signaling molecules that regulate a variety of cellular processes including cell growth, differentiation, mitotic cycle, and oncogenic transformation. This PTP possesses an extracellular region, a single transmembrane region, and a single intracellular catalytic domain, and thus represents a receptor-type PTP. The catalytic domain of this PTP is most closely related to PTPRN/IA-2beta. This PTP and PTPRN are both found to be major autoantigens associated with insulin-dependent diabetes mellitus. Three alternatively spliced transcript variants of this gene, which encode distinct proteins, have been reported. [provided by RefSeq]

**Other Designations:** IAR/receptor-like protein-tyrosine phosphatase, phogrin, protein tyrosine phosphatase receptor pi, tyrosine phosphatase IA-2 beta

## Gene Pathway

[Type I diabetes mellitus](#)

## Related Disease

[Breast cancer](#) [Breast Neoplasms](#) [Cardiovascular Diseases](#) [Cerebral Hemorrhage](#) [Chromosome Deletion](#) [Chronic Disease](#) [Diabetes Mellitus, Type 2](#) [Edema](#) [Genetic Predisposition to Disease](#) [Hypertension](#) [Intracranial Hemorrhages](#) [Kidney Diseases](#) [Kidney Failure, Chronic](#) [Stroke](#) [Subarachnoid Hemorrhage](#) [Tobacco Use Disorder](#)

---

[服務條款](#) | [隱私權政策](#) | [著作及商標](#) | [網站地圖](#)

©2016 亞諾法生技股份有限公司 Abnova Corporation. 版權所有.