



SZABO SCANDIC

Part of Europa Biosite

Produktinformation



Forschungsprodukte & Biochemikalien



Zellkultur & Verbrauchsmaterial



Diagnostik & molekulare Diagnostik



Laborgeräte & Service

Weitere Information auf den folgenden Seiten!
See the following pages for more information!



Lieferung & Zahlungsart

siehe unsere [Liefer- und Versandbedingungen](#)

Zuschläge

- Mindermengenzuschlag
- Trockeneiszuschlag
- Gefahrgutzuschlag
- Expressversand

SZABO-SCANDIC HandelsgmbH

Quellenstraße 110, A-1100 Wien

T. +43(0)1 489 3961-0

F. +43(0)1 489 3961-7

mail@szabo-scandic.com

www.szabo-scandic.com

[linkedin.com/company/szaboscandic](https://www.linkedin.com/company/szaboscandic) 

PTPRO monoclonal antibody (M03), clone 3F4

Catalog # : H00005800-M03

規格 : [100 ug]

[List All](#)

Specification

Product Description: Mouse monoclonal antibody raised against a full-length recombinant PTPRO.

Immunogen: PTPRO (AAH35960, 1 a.a. ~ 597 a.a) full-length recombinant protein with GST tag. MW of the GST tag alone is 26 KDa.

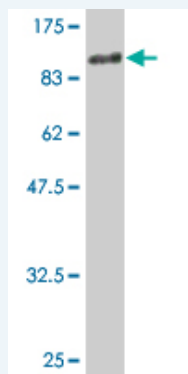
Sequence: MGHLPTGIHGARRLLPLLWLFVLFKNATAFHVTVQDDNNIVSLEASDVIS
PASVYVVKITGESKNYFFFEFEEFNSTLPPPVIKASYHGLYYIITLVVNGN
VWTKPSRSITVLTKPLPVTSVSIYDYKPSPETGVLFIEIHYPEKYNVFRVNI
SYWEGKDFRTMLYKDFKGTVFNHWLPGMCYSNITFQLVSEATFNKS
TLVEYSGVSHEPKQHRTAPYPPQNISVRIVNLNKNNWEEQSGNFPEESFM
RSQDTIGKEKLFHFTEETPEIPSGNISSGWPDFNSSDYETT SQPYWWDS
ASAAPSEDEFVSVLPMEYENNSTLSETEKSTSGSF SFFPVQMILTWLPP
KPPTAFDGFHIEREENFTEYLMVDEEAHEFVAELKEPKYKLSVTTFS
SGSCETRKSQSAKSLSFYISPSGEWIEELTEKPQHVSVHLSSTTALMSW
TSSQENYNSTIVSVSLTCQKQKESQRLEKQYCTQVNSSKPIIENLVPGA
QYQVVIYLRKGPLIGPPSDPVTFAIMPTGIKDLMLYPLGPTAVVLSWTRPY
LGVFRKYVEMFYFNPATMTSEWTTYEIAATVSLTASVVIFP

Host: Mouse

Reactivity: Human

Isotype: IgG2a Kappa

Quality Control Testing: Antibody Reactive Against Recombinant Protein.



Western Blot detection against Immunogen (91.41 KDa) .

Storage Buffer: In 1x PBS, pH 7.4

Storage Instruction: Store at -20°C or lower. Aliquot to avoid repeated freezing and thawing.

MSDS: [Download](#)

Datasheet: [Download](#)

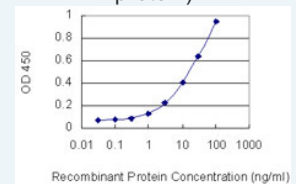
Applications

Western Blot (Recombinant protein)

Application Image

Western Blot (Recombinant protein)

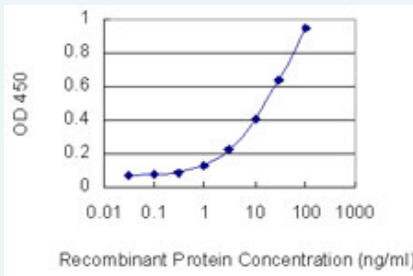
Sandwich ELISA (Recombinant protein)



[enlarge](#)

ELISA

Sandwich ELISA (Recombinant protein)



Detection limit for recombinant GST tagged PTPRO is 0.3 ng/ml as a capture antibody.

ELISA

Gene Information

Entrez GeneID: [5800](#)

GeneBank [BC035960](#)

Accession#:

Protein [AAH35960](#)

Accession#:

Gene Name: PTPRO

Gene Alias: GLEPP1,PTP-U2,PTPU2

Gene Description: protein tyrosine phosphatase, receptor type, O

Omim ID: [600579](#)

Gene Ontology: [Hyperlink](#)

Gene Summary: This gene encodes a receptor-type protein tyrosine phosphatase containing a single intracellular catalytic domain with a characteristic signature motif. The gene product, which has a transmembrane domain, is an integral membrane protein. Several alternatively spliced transcript variants, some of which encode different isoforms of the protein, have been described. These variants exhibit tissue-specific expression. [provided by RefSeq]

Other Designations: PTPROt,PTPase U2,glomerular epithelial protein-1,phosphotyrosine phosphatase U2,protein tyrosine phosphatase PTP-U2,receptor-type protein tyrosine phosphatase O

Related Disease

[Cardiovascular Diseases](#) [Diabetes Mellitus, Type 2](#) [Edema](#) [Tobacco Use Disorder](#)