



SZABO SCANDIC

Part of Europa Biosite

Produktinformation



Forschungsprodukte & Biochemikalien



Zellkultur & Verbrauchsmaterial



Diagnostik & molekulare Diagnostik



Laborgeräte & Service

Weitere Information auf den folgenden Seiten!
See the following pages for more information!



Lieferung & Zahlungsart

siehe unsere [Liefer- und Versandbedingungen](#)

Zuschläge

- Mindermengenzuschlag
- Trockeneiszuschlag
- Gefahrgutzuschlag
- Expressversand

SZABO-SCANDIC HandelsgmbH

Quellenstraße 110, A-1100 Wien

T. +43(0)1 489 3961-0

F. +43(0)1 489 3961-7

mail@szabo-scandic.com

www.szabo-scandic.com

[linkedin.com/company/szaboscandic](https://www.linkedin.com/company/szaboscandic) 

RBL2 monoclonal antibody (M07), clone 4D7

Catalog # : H00005934-M07

規格 : [100 ug]

[List All](#)

Specification

Product Description: Mouse monoclonal antibody raised against a partial recombinant RBL2.

Immunogen: RBL2 (NP_005602, 416 a.a. ~ 515 a.a) partial recombinant protein with GST tag. MW of the GST tag alone is 26 KDa.

Sequence: VTPVSTATHLSRLHTMLTGLRNAPSEKLEQILRTCSRDPQTQAIANRLKE
MFEIYSQHFQPEDDFSNCAKEIASKHFRFAEMLYYKVLSEVIEQEQKRLG

Host: Mouse

Reactivity: Human

Isotype: IgG2a Kappa

Quality Control Testing: Antibody Reactive Against Recombinant Protein.

Storage Buffer: In 1x PBS, pH 7.4

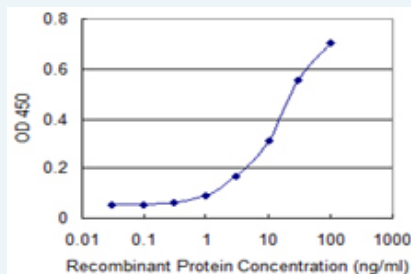
Storage Instruction: Store at -20°C or lower. Aliquot to avoid repeated freezing and thawing.

MSDS:  [Download](#)


Datasheet:  [Download](#)

Applications

Sandwich ELISA (Recombinant protein)



Detection limit for recombinant GST tagged RBL2 is 0.3 ng/ml as a capture antibody.

 [Protocol Download](#)

ELISA

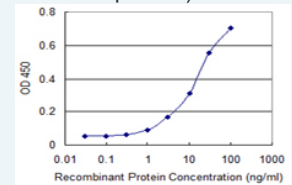
Gene Information


Entrez GeneID: [5934](#)

GeneBank Accession#: [NM_005611](#)

Application Image

Sandwich ELISA (Recombinant protein)



 [enlarge](#)

ELISA

Protein [NP_005602](#)

Accession#:

Gene Name: RBL2

Gene Alias: FLJ26459,P130,Rb2

Gene retinoblastoma-like 2 (p130)

Description:

Omim ID: [180203](#)

Gene Ontology: [Hyperlink](#)

Other -

Designations:

Gene Pathway

Cell cycle [TGF-beta signaling pathway](#)

Related Disease

[Genetic Predisposition to Disease Ovarian Neoplasms](#)

[服務條款](#) | [隱私權政策](#) | [著作及商標](#) | [網站地圖](#)

©2016 亞諾法生技股份有限公司 Abnova Corporation. 版權所有.