



# SZABO SCANDIC

Part of Europa Biosite

## Produktinformation



Forschungsprodukte & Biochemikalien



Zellkultur & Verbrauchsmaterial



Diagnostik & molekulare Diagnostik



Laborgeräte & Service

Weitere Information auf den folgenden Seiten!  
See the following pages for more information!



### Lieferung & Zahlungsart

siehe unsere [Liefer- und Versandbedingungen](#)

### Zuschläge

- Mindermengenzuschlag
- Trockeneiszuschlag
- Gefahrgutzuschlag
- Expressversand

### SZABO-SCANDIC HandelsgmbH

Quellenstraße 110, A-1100 Wien

T. +43(0)1 489 3961-0

F. +43(0)1 489 3961-7

[mail@szabo-scandic.com](mailto:mail@szabo-scandic.com)

[www.szabo-scandic.com](http://www.szabo-scandic.com)

[linkedin.com/company/szaboscandic](https://www.linkedin.com/company/szaboscandic) 

## RBL2 monoclonal antibody (M08), clone 2H7

Catalog # : H00005934-M08

規格 : [ 100 ug ]

[List All](#)

### Specification

**Product Description:** Mouse monoclonal antibody raised against a partial recombinant RBL2.

**Immunogen:** RBL2 (NP\_005602, 416 a.a. ~ 515 a.a) partial recombinant protein with GST tag. MW of the GST tag alone is 26 KDa.

**Sequence:** VTPVSTATHSL SRLHTMLTGLRNAPSEKLEQLRTCSRDPQTQAIANRLKE  
MFEIYSQHFQPEDDFSNCAKEIASKHFRFAEMLYYKVLSEVIEQEQKRLG

**Host:** Mouse

**Reactivity:** Human

**Isotype:** IgG2a Kappa

**Quality Control Testing:** Antibody Reactive Against Recombinant Protein.

**Storage Buffer:** In 1x PBS, pH 7.4

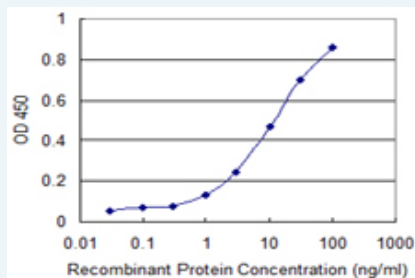
**Storage Instruction:** Store at -20°C or lower. Aliquot to avoid repeated freezing and thawing.

**MSDS:**  [Download](#)

**Datasheet:**  [Download](#)

### Applications

#### Sandwich ELISA (Recombinant protein)



Detection limit for recombinant GST tagged RBL2 is 0.3 ng/ml as a capture antibody.

 [Protocol Download](#)

ELISA

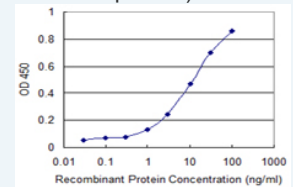
### Gene Information


**Entrez GeneID:** [5934](#)

**GeneBank Accession#:** [NM\\_005611](#)

### Application Image

Sandwich ELISA (Recombinant protein)



 [enlarge](#)

ELISA

**Protein** [NP\\_005602](#)

**Accession#:**

---

**Gene Name:** RBL2

---

**Gene Alias:** FLJ26459,P130,Rb2

---

**Gene** retinoblastoma-like 2 (p130)

**Description:**

---

**Omim ID:** [180203](#)

---

**Gene Ontology:** [Hyperlink](#)

---

**Other** -

**Designations:**

---

### **Gene Pathway**

---

Cell cycle [TGF-beta signaling pathway](#)

### **Related Disease**

---

[Genetic Predisposition to Disease Ovarian Neoplasms](#)

---

[服務條款](#) | [隱私權政策](#) | [著作及商標](#) | [網站地圖](#)

©2016 亞諾法生技股份有限公司 Abnova Corporation. 版權所有.