



SZABO SCANDIC

Part of Europa Biosite

Produktinformation



Forschungsprodukte & Biochemikalien



Zellkultur & Verbrauchsmaterial



Diagnostik & molekulare Diagnostik



Laborgeräte & Service

Weitere Information auf den folgenden Seiten!
See the following pages for more information!



Lieferung & Zahlungsart

siehe unsere [Liefer- und Versandbedingungen](#)

Zuschläge

- Mindermengenzuschlag
- Trockeneiszuschlag
- Gefahrgutzuschlag
- Expressversand

SZABO-SCANDIC HandelsgmbH

Quellenstraße 110, A-1100 Wien

T. +43(0)1 489 3961-0

F. +43(0)1 489 3961-7

mail@szabo-scandic.com

www.szabo-scandic.com

[linkedin.com/company/szaboscandic](https://www.linkedin.com/company/szaboscandic) 

RBMS1 MaxPab mouse polyclonal antibody (B01) MaxPab®

Catalog # : H00005937-B01

規格 : [50 uL]

[List All](#)

Specification

Product Description: Mouse polyclonal antibody raised against a full-length human RBMS1 protein.

Immunogen: RBMS1 (NP_058520, 1 a.a. ~ 406 a.a) full-length human protein.

Sequence:
 MGKVKQMQMPQYATYYYPQYLQAKQSLVPAHPMAPPSPSTTSSNNN
 SSSSSNSGWDQLSKTNLYIRGLPPHTTDQDLVKLCQPYGKIVSTKAILDK
 TTNKCKGYGFVDFDSPAQAQKAVSALKASGVQAQMAKQQEQDPTNLYI
 SNLPLSMDEQELENMLKPFQVISTRILRDSSGTSRGVGFARMESTEKC
 EAVIGHFNGKFIKTPPGVSAPTEPLLCKFADGGQKQRQNPNKYIPNGRPW
 HREGEVRLAGMTLTYDPTTAAIQNGFYSPYSIATNRMITQTSITPYIASPV
 SAYVQVQSPSWMQPQPYILQHPGAVLTPSMEHTMSLQPASMISPLAQQM
 SHLSLGGSTGYMPATSAMQGAYLPQYAHMQTTAVPVEEASGQQQVAV
 ETSNDHSPYTFQPNK

Host: Mouse

Reactivity: Human

Quality Control Testing: Antibody reactive against mammalian transfected lysate.

Storage Buffer: No additive

Storage Instruction: Store at -20°C or lower. Aliquot to avoid repeated freezing and thawing.

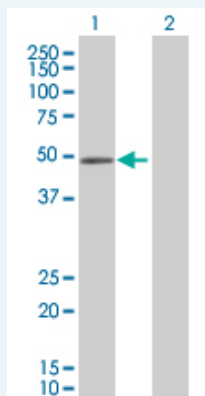
Note: For IHC and IF applications, antibody purification with Protein A will be needed prior to use.

MSDS:  [Download](#)

Datasheet:  [Download](#)

Applications

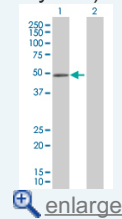
Western Blot (Transfected lysate)



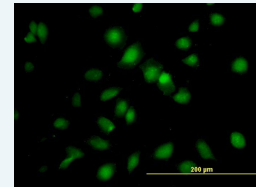
Western Blot analysis of RBMS1 expression in transfected 293T cell line (H00005937-T01) by RBMS1 MaxPab polyclonal antibody.

Application Image

Western Blot (Transfected lysate)



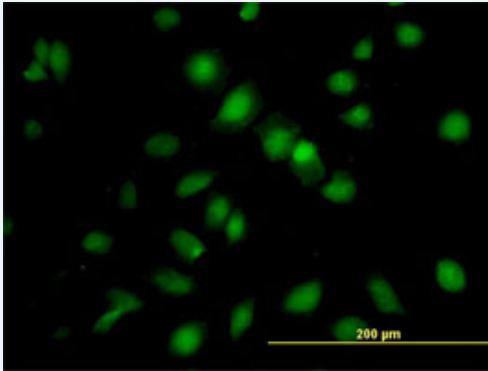
Immunofluorescence




Lane 1: RBMS1 transfected lysate(44.66 KDa).
Lane 2: Non-transfected lysate.


 [Protocol Download](#)

Immunofluorescence



 [enlarge this image](#)

Immunofluorescence of purified MaxPab antibody to RBMS1 on HeLa cell. [antibody concentration 10 ug/ml]

 [Protocol Download](#)

Gene Information

Entrez GeneID: [5937](#)

GeneBank Accession#: [NM_016836](#)

Protein Accession#: [NP_058520](#)

Gene Name: RBMS1

Gene Alias: MGC15146,MGC3331,MSSP,MSSP-1,MSSP-2,MSSP-3,SCR2,YC1

Gene Description: RNA binding motif, single stranded interacting protein 1

Omim ID: [602310](#)

Gene Ontology: [Hyperlink](#)

Gene Summary: This gene encodes a member of a small family of proteins which bind single stranded DNA/RNA. These proteins are characterized by the presence of two sets of ribonucleoprotein consensus sequence (RNP-CS) that contain conserved motifs, RNP1 and RNP2, originally described in RNA binding proteins, and required for DNA binding. These proteins have been implicated in such diverse functions as DNA replication, gene transcription, cell cycle progression and apoptosis. Several transcript variants, resulting from alternative splicing and encoding different isoforms, have been described. A pseudogene for this locus is found on chromosome 12. [provided by RefSeq]

Other Designations: c-myc gene single strand binding protein 2, suppressor of cdc 2 (cdc13) with RNA binding motif 2

Related Disease

[Diabetes Mellitus, Type 2](#) [Genetic Predisposition to Disease](#) [Insulin Resistance](#) [Tobacco Use Disorder](#)

