



SZABO SCANDIC

Part of Europa Biosite

Produktinformation



Forschungsprodukte & Biochemikalien



Zellkultur & Verbrauchsmaterial



Diagnostik & molekulare Diagnostik



Laborgeräte & Service

Weitere Information auf den folgenden Seiten!
See the following pages for more information!



Lieferung & Zahlungsart

siehe unsere [Liefer- und Versandbedingungen](#)

Zuschläge

- Mindermengenzuschlag
- Trockeneiszuschlag
- Gefahrgutzuschlag
- Expressversand

SZABO-SCANDIC HandelsgmbH

Quellenstraße 110, A-1100 Wien

T. +43(0)1 489 3961-0

F. +43(0)1 489 3961-7

mail@szabo-scandic.com

www.szabo-scandic.com

[linkedin.com/company/szaboscandic](https://www.linkedin.com/company/szaboscandic) 

RBMS1 monoclonal antibody (M02), clone M1

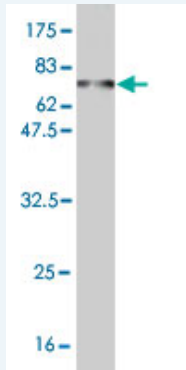
Catalog # : H00005937-M02

規格 : [100 ug]

[List All](#)

Specification

Product Description:	Mouse monoclonal antibody raised against a full length recombinant RBMS1.
Immunogen:	RBMS1 (AAH12993, 1 a.a. ~ 403 a.a) full-length recombinant protein with GST tag. MW of the GST tag alone is 26 KDa.
Sequence:	MGKWWKQQMYPQYATYYYYPQYLQAKQSLVPAHPMAPPSPSTTSSNNN SSSSNSGWDQLSKTNLYIRGLPPHTTDQDLVKLCQPYGKIVSTKAILDK TTNKCKGYGFVDFDSPAQAQKAVSALKASGVQAQMAKQQEQDPTNLYI SNLPLSMDEQELNMLKPFQVISTRILRDSSGTSRGVGFARMESTEK EAVIGHFNGKFIKTPPGVSAPTEPLLCKFADGGQKKRQNPKNKYIPNGRPW HREGEGMTLTYPDTTAAIQNGFYPSYSIATNRMITQTSITPYIASPVSA YQVQSPSWMQPQPYLQHPGAVLTSPMEHTMSLQPASMSPLAQQMSHL SLGSTGTYPATSAMQGAYLPQYAHMQTTAVPVEEASGQQQVAVETS NDHSPYTFQPNK
Host:	Mouse
Reactivity:	Human
Isotype:	IgG1 Kappa
Quality Control Testing:	Antibody Reactive Against Recombinant Protein.



Western Blot detection against Immunogen (70.07 KDa) .

Storage Buffer: In 1x PBS, pH 7.4

Storage Instruction: Store at -20°C or lower. Aliquot to avoid repeated freezing and thawing.

MSDS: [Download](#)

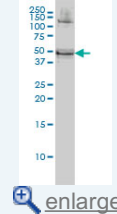
Datasheet: [Download](#)

Applications

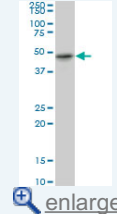
Western Blot (Cell lysate)

Application Image

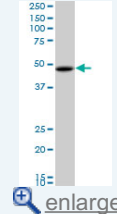
Western Blot (Cell lysate)



Western Blot (Cell lysate)



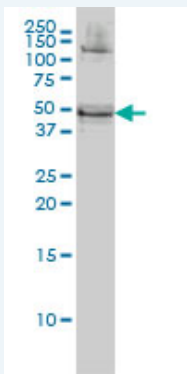
Western Blot (Cell lysate)




Western Blot (Recombinant protein)

Sandwich ELISA (Recombinant protein)

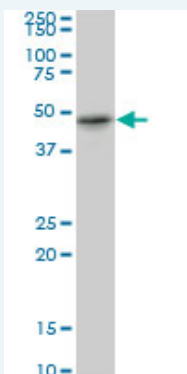
ELISA



RBMS1 monoclonal antibody (M02), clone M1 Western Blot analysis of RBMS1 expression in HeLa (Cat # L013V1).

 [Protocol Download](#)

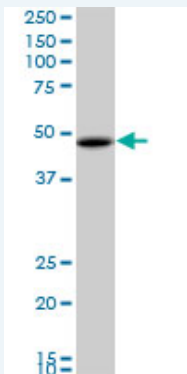
Western Blot (Cell lysate)



RBMS1 monoclonal antibody (M02), clone M1. Western Blot analysis of RBMS1 expression in MES-SA/Dx5 (Cat # L021V1).

 [Protocol Download](#)


Western Blot (Cell lysate)



RBMS1 monoclonal antibody (M02), clone M1. Western Blot analysis of RBMS1 expression in SJCRH30 (Cat # L027V1).


 [Protocol Download](#)

Western Blot (Recombinant protein)

 [Protocol Download](#)

Sandwich ELISA (Recombinant protein)

Detection limit for recombinant GST tagged RBMS1 is approximately 30ng/ml as a capture antibody.

 [Protocol Download](#)

ELISA

Gene Information

Entrez GeneID: [5937](#)

GeneBank [BC012993](#)

Accession#:**Protein** [AAH12993](#)**Accession#:****Gene Name:** RBMS1**Gene Alias:** MGC15146,MGC3331,MSSP,MSSP-1,MSSP-2,MSSP-3,SCR2,YC1**Gene Description:** RNA binding motif, single stranded interacting protein 1**Omim ID:** [602310](#)**Gene Ontology:** [Hyperlink](#)

Gene Summary: This gene encodes a member of a small family of proteins which bind single stranded DNA/RNA. These proteins are characterized by the presence of two sets of ribonucleoprotein consensus sequence (RNP-CS) that contain conserved motifs, RNP1 and RNP2, originally described in RNA binding proteins, and required for DNA binding. These proteins have been implicated in such diverse functions as DNA replication, gene transcription, cell cycle progression and apoptosis. Several transcript variants, resulting from alternative splicing and encoding different isoforms, have been described. A pseudogene for this locus is found on chromosome 12. [provided by RefSeq]

Other Designations: c-myc gene single strand binding protein 2,suppressor of cdc 2 (cdc13) with RNA binding motif 2

Related Disease

[Diabetes Mellitus, Type 2](#) [Genetic Predisposition to Disease](#) [Insulin Resistance](#)
[Tobacco Use Disorder](#)