



SZABO SCANDIC

Part of Europa Biosite

Produktinformation



Forschungsprodukte & Biochemikalien



Zellkultur & Verbrauchsmaterial



Diagnostik & molekulare Diagnostik



Laborgeräte & Service

Weitere Information auf den folgenden Seiten!
See the following pages for more information!



Lieferung & Zahlungsart

siehe unsere [Liefer- und Versandbedingungen](#)

Zuschläge

- Mindermengenzuschlag
- Trockeneiszuschlag
- Gefahrgutzuschlag
- Expressversand

SZABO-SCANDIC HandelsgmbH

Quellenstraße 110, A-1100 Wien

T. +43(0)1 489 3961-0

F. +43(0)1 489 3961-7

mail@szabo-scandic.com

www.szabo-scandic.com

[linkedin.com/company/szaboscandic](https://www.linkedin.com/company/szaboscandic) 

RBMY1A1 purified MaxPab mouse polyclonal antibody (B01P) MaxPab®

Catalog # : H00005940-B01P

規格 : [50 ug]

[List All](#)

Specification

Product Description: Mouse polyclonal antibody raised against a full-length human RBMY1A1 protein.

Immunogen: RBMY1A1 (NP_001007527.1, 1 a.a. ~ 356 a.a) full-length human protein.

Sequence:
 MSYSRGLIPVKRGPSSRSGGPPPKKSAPSAVARSNSWMGSQGPMSSQR
 RENYGVPPRRATISSWRNDRMSTRHDGYATNDGNHPSCQETRDYAPPS
 RGYAYRDNGHSNRDEHSSRGYRNHRSSRETRDYAPPSRGHAYRDYGH
 SRRDESYSRGYRNRSSRETRDYAPPSRGHGYRDYGHSSRRHESYSRG
 YRNHPSSRETRDYAPPHRDYAYRDYGHSSWDEHSSRGYSYHDGYGEAL
 GRDHSEHLGSSYRDALQRYGTSHGAPPARGPRMSYGGSTCHAYSNT
 RDRYGRSWESYSSCGDFHYCDREHVCRKQQRNPPSLGRVLPDPREAC
 GSSSYVASMDGGESRSEKGDSSRY

Host: Mouse

Reactivity: Human

Quality Control Testing: Antibody reactive against mammalian transfected lysate.

Storage Buffer: In 1x PBS, pH 7.4

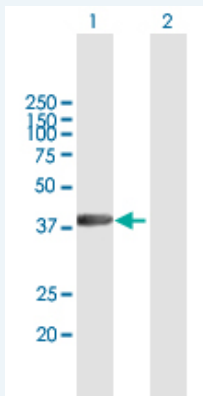
Storage Instruction: Store at -20°C or lower. Aliquot to avoid repeated freezing and thawing.

MSDS: [Download](#)

Datasheet: [Download](#)

Applications

Western Blot (Transfected lysate)

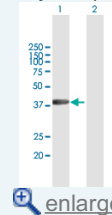


Western Blot analysis of RBMY1A1 expression in transfected 293T cell line (H00005940-T01) by RBMY1A1 MaxPab polyclonal antibody.

Lane 1: RBMY1A1 transfected lysate(39.16 kDa).
 Lane 2: Non-transfected lysate.

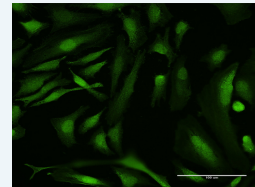
Application Image

Western Blot (Transfected lysate)



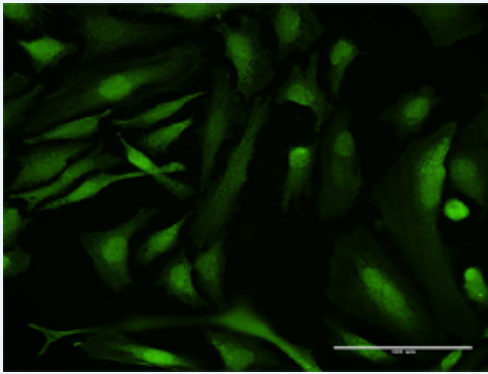
[enlarge](#)


Immunofluorescence



[enlarge](#)

Immunofluorescence



 enlarge this image

Immunofluorescence of purified MaxPab antibody to RBMY1A1 on HeLa cell. [antibody concentration 10 ug/ml]

Gene Information

Entrez GeneID: [5940](#)

**GeneBank
Accession#:** [NM_001007526](#)

**Protein
Accession#:** [NP_001007527.1](#)

Gene Name: RBMY1A1

Gene Alias: MGC181956,RBM1,RBM2,RBMY,YRRM1,YRRM2

**Gene
Description:** RNA binding motif protein, Y-linked, family 1, member A1

Omim ID: [400006](#)

Gene Ontology: [Hyperlink](#)

Gene Summary: This gene encodes a protein containing an RNA-binding motif in the N-terminus and four SRGY (serine, arginine, glycine, tyrosine) boxes in the C-terminus. Multiple copies of this gene are found in the AZFb azoospermia factor region of chromosome Y and the encoded protein is thought to be involved in spermatogenesis. Most copies of this locus are pseudogenes, although six highly similar copies have full-length ORFs and are considered functional. Four functional copies of this gene are found within inverted repeat IR2; two functional copies of this gene are found in palindrome P3, along with two copies of PTPN13-like, Y-linked. [provided by RefSeq]

**Other
Designations:** OTTHUMP00000040529,RNA binding motif protein 1,RNA binding motif protein 2,RNA binding motif protein, Y chromosome, family 1, member A1