



SZABO SCANDIC

Part of Europa Biosite

Produktinformation



Forschungsprodukte & Biochemikalien



Zellkultur & Verbrauchsmaterial



Diagnostik & molekulare Diagnostik



Laborgeräte & Service

Weitere Information auf den folgenden Seiten!
See the following pages for more information!



Lieferung & Zahlungsart

siehe unsere [Liefer- und Versandbedingungen](#)

Zuschläge

- Mindermengenzuschlag
- Trockeneiszuschlag
- Gefahrgutzuschlag
- Expressversand

SZABO-SCANDIC HandelsgmbH

Quellenstraße 110, A-1100 Wien

T. +43(0)1 489 3961-0

F. +43(0)1 489 3961-7

mail@szabo-scandic.com

www.szabo-scandic.com

[linkedin.com/company/szaboscandic](https://www.linkedin.com/company/szaboscandic) 

RCN1 monoclonal antibody (M02), clone 4D9-G3

Catalog # : H00005954-M02

規格 : [100 ug]

[List All](#)

Specification

Product Description: Mouse monoclonal antibody raised against a full-length recombinant RCN1.

Immunogen: RCN1 (AAH10120, 31 a.a. ~ 331 a.a) full-length recombinant protein with GST tag. MW of the GST tag alone is 26 KDa.

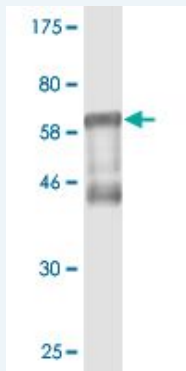
Sequence: PTVRKERVVRPDSSELGERPPEDNQSFQYDHEAFLGKEDSKTFDQLTPD
ESKERLGKIVDRIDNDGDGFVTTEELKTWIKRVQKRYIFDNVAKVWKDYD
RDKDDKISWEEYKQATYGYLGNPAEFHDSSDHHTFKMLPRDERRFK
AADLNGDLTATREEFTAFHPEEF EHMKEIVLETLEDIDKNGDGFVDQD
EYIADMF SHEENGPEPDWVLSEREQFNEFRDLNKDGKLDKDEIRHWILP
QDYDHAQAEARHLVYESDKNKDEKL TKEEILENWNMFVGSQATNYGEDL
TKNHDEL

Host: Mouse

Reactivity: Human

Isotype: IgG1 Kappa

Quality Control Testing: Antibody Reactive Against Recombinant Protein.



Western Blot detection against Immunogen (58.63 KDa) .

Storage Buffer: In 1x PBS, pH 7.4

Storage Instruction: Store at -20°C or lower. Aliquot to avoid repeated freezing and thawing.

MSDS: [Download](#)

Datasheet: [Download](#)

Applications

Western Blot (Recombinant protein)

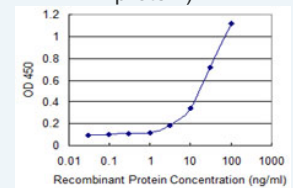
[Protocol Download](#)

Sandwich ELISA (Recombinant protein)

Application Image

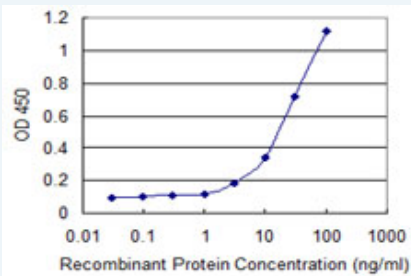
Western Blot (Recombinant protein)

Sandwich ELISA (Recombinant protein)




[enlarge](#)

ELISA



Detection limit for recombinant GST tagged RCN1 is 1 ng/ml as a capture antibody.

 [Protocol Download](#)

ELISA

Gene Information

Entrez GeneID: [5954](#)

GeneBank [BC010120](#)

Accession#:

Protein [AAH10120](#)

Accession#:

Gene Name: RCN1

Gene Alias: FLJ37041,PIG20,RCAL,RCN

Gene Description: reticulocalbin 1, EF-hand calcium binding domain

Omim ID: [602735](#)

Gene Ontology: [Hyperlink](#)

Gene Summary: Reticulocalbin 1 is a calcium-binding protein located in the lumen of the ER. The protein contains six conserved regions with similarity to a high affinity Ca(+2)-binding motif, the EF-hand. High conservation of amino acid residues outside of these motifs, in comparison to mouse reticulocalbin, is consistent with a possible biochemical function besides that of calcium binding. In human endothelial and prostate cancer cell lines this protein localizes to the plasma membrane

Other Designations: proliferation-inducing gene 20,reticulocalbin 1