



SZABO SCANDIC

Part of Europa Biosite

Produktinformation



Forschungsprodukte & Biochemikalien



Zellkultur & Verbrauchsmaterial



Diagnostik & molekulare Diagnostik



Laborgeräte & Service

Weitere Information auf den folgenden Seiten!
See the following pages for more information!



Lieferung & Zahlungsart

siehe unsere [Liefer- und Versandbedingungen](#)

Zuschläge

- Mindermengenzuschlag
- Trockeneiszuschlag
- Gefahrgutzuschlag
- Expressversand

SZABO-SCANDIC HandelsgmbH

Quellenstraße 110, A-1100 Wien

T. +43(0)1 489 3961-0

F. +43(0)1 489 3961-7

mail@szabo-scandic.com

www.szabo-scandic.com

[linkedin.com/company/szaboscandic](https://www.linkedin.com/company/szaboscandic) 

RCN2 purified MaxPab rabbit polyclonal antibody (D01P) MaxPab®

Catalog # : H00005955-D01P

規格 : [100 ug]

[List All](#)

Specification

Product Description: Rabbit polyclonal antibody raised against a full-length human RCN2 protein.

Immunogen: RCN2 (NP_002893.1, 1 a.a. ~ 317 a.a) full-length human protein.

Sequence:
 MRLGPRTAALGLLLCAAAGAGKAEELHYPLGERRSDYDREALLGVQ
 EDVDEYVVLGHEEQKRLQAIKKIDLDSDGFLTESELSSWIQMSFKHYA
 MQEAKQQFVEYDKNSDDTWTWDEYNIQMYDRVIDFDENTALDDAEEESF
 RKLHLKDKKRFKANQDSGPGLSLEEFIAFEHPPEVDYMTFVIQEAL
 HDKNGDGFVSLEEF LGDYRWDPTANEDPEWILVEKDRFVNDYDKDNDG
 RLDPQELLPWVVPNNQGIAQEEALHLIDEMDLNGDKKLSSEEEILENPDLFL
 TSEATDYGRQLHDDYFYHDEL

Host: Rabbit

Reactivity: Human

Quality Control Testing: Antibody reactive against mammalian transfected lysate.

Storage Buffer: In 1x PBS, pH 7.4

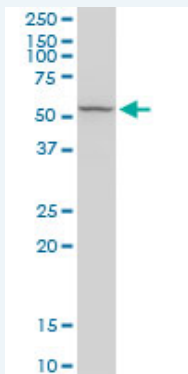
Storage Instruction: Store at -20°C or lower. Aliquot to avoid repeated freezing and thawing.

MSDS:  [Download](#)

Datasheet:  [Download](#)

Applications

Western Blot (Tissue lysate)



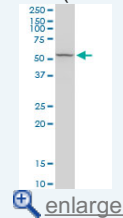
RCN2 MaxPab rabbit polyclonal antibody. Western Blot analysis of RCN2 expression in human liver.

 [Protocol Download](#)

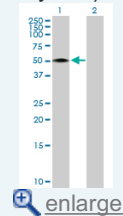
Western Blot (Transfected lysate)

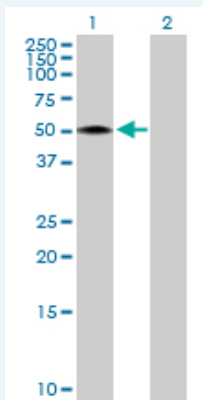
Application Image

Western Blot (Tissue lysate)



Western Blot (Transfected lysate)





Western Blot analysis of RCN2 expression in transfected 293T cell line ([H00005955-T02](#)) by RCN2 MaxPab polyclonal antibody.

Lane 1: RCN2 transfected lysate(36.90 KDa).

Lane 2: Non-transfected lysate.

 [Protocol Download](#)

Gene Information

Entrez GeneID: [5955](#)

GeneBank [NM_002902.1](#)

Accession#:

Protein [NP_002893.1](#)

Accession#:

Gene Name: RCN2

Gene Alias: E6BP,ERC-55,ERC55,TCBP49

Gene reticulocalbin 2, EF-hand calcium binding domain

Description:

Omim ID: [602584](#)

Gene Ontology: [Hyperlink](#)

Gene Summary: The protein encoded by this gene is a calcium-binding protein located in the lumen of the ER. The protein contains six conserved regions with similarity to a high affinity Ca(+2)-binding motif, the EF-hand. This gene maps to the same region as type 4 Bardet-Biedl syndrome, suggesting a possible causative role for this gene in the disorder. [provided by RefSeq]

Other Designations: Reticulocalbin 2, EF-hand calcium binding domain (endoplasmic reticulum calcium-binding protein, 55kD)

[服務條款](#) | [隱私權政策](#) | [著作及商標](#) | [網站地圖](#)

©2016 亞諾法生技股份有限公司 Abnova Corporation. 版權所有.