



# SZABO SCANDIC

Part of Europa Biosite

## Produktinformation



Forschungsprodukte & Biochemikalien



Zellkultur & Verbrauchsmaterial



Diagnostik & molekulare Diagnostik



Laborgeräte & Service

Weitere Information auf den folgenden Seiten!  
See the following pages for more information!



### Lieferung & Zahlungsart

siehe unsere [Liefer- und Versandbedingungen](#)

### Zuschläge

- Mindermengenzuschlag
- Trockeneiszuschlag
- Gefahrgutzuschlag
- Expressversand

### SZABO-SCANDIC HandelsgmbH

Quellenstraße 110, A-1100 Wien

T. +43(0)1 489 3961-0

F. +43(0)1 489 3961-7

[mail@szabo-scandic.com](mailto:mail@szabo-scandic.com)

[www.szabo-scandic.com](http://www.szabo-scandic.com)

[linkedin.com/company/szaboscandic](https://www.linkedin.com/company/szaboscandic) 

## RCN2 monoclonal antibody (M02), clone 1A9

Catalog # : H00005955-M02

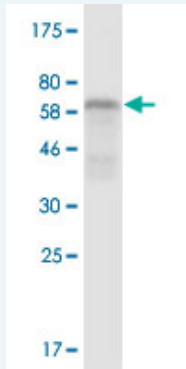
規格 : [ 100 ug ]

[List All](#)

### Specification

<b>Product Description:</b>	Mouse monoclonal antibody raised against a full-length recombinant RCN2.
<b>Immunogen:</b>	RCN2 (AAH04892.1, 24 a.a. ~ 317 a.a) full-length recombinant protein with GST tag. MW of the GST tag alone is 26 KDa.
<b>Sequence:</b>	KAEELHYPLGERRSYDREALLGVQEDVDEYVKLGHEEQQKRLQAIKKI DLDSGDFLTESELSSWIQMSFKHYAMQEAKQFVEYDKNSDDTVTWDE YNIQMYDRVIDFDENTALDDAEEESFRKLHLKDKKRFKANQDSGPGLSL EEFIAFEHPPEVDYMTFVQEALEEHDKNGDGFVSLEEF LGDYRWDPT ANEDPEWILVEKDRFVNDYDKDNDGR LDPQELLPWVVPNNQGIQEEAL HLIDEMDLNGDKKLSEEEILENPD LFLTSEATDYGRQLHDDYFYHDEL
<b>Host:</b>	Mouse
<b>Reactivity:</b>	Human
<b>Isotype:</b>	IgG1 Kappa

**Quality Control Testing:** Antibody Reactive Against Recombinant Protein.



Western Blot detection against Immunogen (57.97 KDa) .

**Storage Buffer:** In 1x PBS, pH 7.4

**Storage Instruction:** Store at -20°C or lower. Aliquot to avoid repeated freezing and thawing.

**MSDS:** [Download](#)

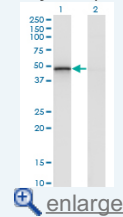
**Datasheet:** [Download](#)

### Applications

Western Blot (Transfected lysate)

### Application Image

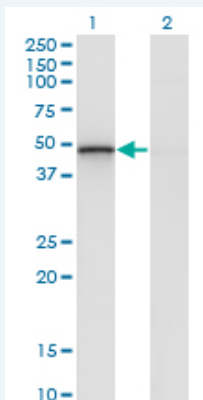
Western Blot (Transfected lysate)



[enlarge](#)

Western Blot (Recombinant protein)

ELISA



Western Blot analysis of RCN2 expression in transfected 293T cell line by RCN2 monoclonal antibody (M02), clone 1A9.

Lane 1: RCN2 transfected lysate(36.9 KDa).  
Lane 2: Non-transfected lysate.

 [Protocol Download](#)

### Western Blot (Recombinant protein)

 [Protocol Download](#)

### ELISA

### Gene Information

**Entrez GeneID:** [5955](#)

**GeneBank Accession#:** [BC004892](#)

**Protein Accession#:** [AAH04892.1](#)

**Gene Name:** RCN2

**Gene Alias:** E6BP,ERC-55,ERC55,TCBP49

**Gene Description:** reticulocalbin 2, EF-hand calcium binding domain

**Omim ID:** [602584](#)

**Gene Ontology:** [Hyperlink](#)

**Gene Summary:** The protein encoded by this gene is a calcium-binding protein located in the lumen of the ER. The protein contains six conserved regions with similarity to a high affinity Ca(+2)-binding motif, the EF-hand. This gene maps to the same region as type 4 Bardet-Biedl syndrome, suggesting a possible causative role for this gene in the disorder. [provided by RefSeq]

**Other Designations:** Reticulocalbin 2, EF-hand calcium binding domain (endoplasmic reticulum calcium-binding protein, 55kD)