



# SZABO SCANDIC

Part of Europa Biosite

## Produktinformation



Forschungsprodukte & Biochemikalien



Zellkultur & Verbrauchsmaterial



Diagnostik & molekulare Diagnostik



Laborgeräte & Service

Weitere Information auf den folgenden Seiten!  
See the following pages for more information!



### Lieferung & Zahlungsart

siehe unsere [Liefer- und Versandbedingungen](#)

### Zuschläge

- Mindermengenzuschlag
- Trockeneiszuschlag
- Gefahrgutzuschlag
- Expressversand

### SZABO-SCANDIC HandelsgmbH

Quellenstraße 110, A-1100 Wien

T. +43(0)1 489 3961-0

F. +43(0)1 489 3961-7

[mail@szabo-scandic.com](mailto:mail@szabo-scandic.com)

[www.szabo-scandic.com](http://www.szabo-scandic.com)

[linkedin.com/company/szaboscandic](https://www.linkedin.com/company/szaboscandic) 

## RCV1 MaxPab mouse polyclonal antibody (B01) MaxPab®

Catalog # : H00005957-B01

規格 : [ 50 uL ]

[List All](#)

### Specification

**Product Description:** Mouse polyclonal antibody raised against a full-length human RCV1 protein.

**Immunogen:** RCV1 (NP\_002894.1, 1 a.a. ~ 200 a.a) full-length human protein.

**Sequence:**  
 MGNSKSGALSKEILEELQLNTKFSEEELCSWYQSFLKDCPTGRITQQQF  
 QSIYAKFFPDTDPKAYAQHVFERSFDSNLDGTLDFKEYVIALHMTTAGKTN  
 QKLEWAFSLYDVDGNGTISKNEVLEIVMAIFKMITPEDVKLLPDDENTPEK  
 RAEKIWKYFGKNDDDKLTEKEFIEGTLANKEILRLIQFEPQKVKEKMKNA

**Host:** Mouse

**Reactivity:** Human

**Quality Control Testing:** Antibody reactive against mammalian transfected lysate.

**Storage Buffer:** No additive

**Storage Instruction:** Store at -20°C or lower. Aliquot to avoid repeated freezing and thawing.

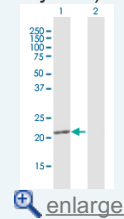
**Note:** For IHC and IF applications, antibody purification with Protein A will be needed prior to use.


**MSDS:**  [Download](#)

**Datasheet:**  [Download](#)

### Application Image

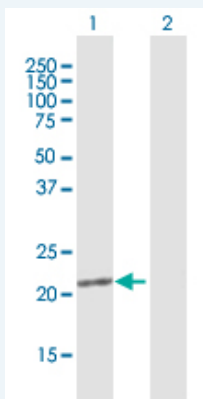
Western Blot (Transfected lysate)



 [enlarge](#)

### Applications


Western Blot (Transfected lysate)



Western Blot analysis of RCVRN expression in transfected 293T cell line (H00005957-T01) by RCVRN MaxPab polyclonal antibody.

Lane 1: RCV1 transfected lysate(22 KDa).

Lane 2: Non-transfected lysate.

 [Protocol Download](#)

## Gene Information

---

**Entrez GeneID:** [5957](#)

---

**GeneBank  
Accession#:** [NM\\_002903.2](#)

---

**Protein  
Accession#:** [NP\\_002894.1](#)

---

**Gene Name:** RCVRN

---

**Gene Alias:** RCV1

---

**Gene  
Description:** recoverin

---

**Omim ID:** [179618](#)

---

**Gene Ontology:** [Hyperlink](#)

---

**Gene Summary:** This gene encodes a member of the recoverin family of neuronal calcium sensors. The encoded protein contains three calcium-binding EF-hand domains and may prolong the termination of the phototransduction cascade in the retina by blocking the phosphorylation of photo-activated rhodopsin. Recoverin may be the antigen responsible for cancer-associated retinopathy. [provided by RefSeq]

---

**Other  
Designations:** cancer associated retinopathy antigen

---

---

[服務條款](#) | [隱私權政策](#) | [著作及商標](#) | [網站地圖](#)

©2016 亞諾法生技股份有限公司 Abnova Corporation. 版權所有.