



# SZABO SCANDIC

Part of Europa Biosite

## Produktinformation



Forschungsprodukte & Biochemikalien



Zellkultur & Verbrauchsmaterial



Diagnostik & molekulare Diagnostik



Laborgeräte & Service

Weitere Information auf den folgenden Seiten!  
See the following pages for more information!



### Lieferung & Zahlungsart

siehe unsere [Liefer- und Versandbedingungen](#)

### Zuschläge

- Mindermengenzuschlag
- Trockeneiszuschlag
- Gefahrgutzuschlag
- Expressversand

### SZABO-SCANDIC HandelsgmbH

Quellenstraße 110, A-1100 Wien

T. +43(0)1 489 3961-0

F. +43(0)1 489 3961-7

[mail@szabo-scandic.com](mailto:mail@szabo-scandic.com)

[www.szabo-scandic.com](http://www.szabo-scandic.com)

[linkedin.com/company/szaboscandic](https://www.linkedin.com/company/szaboscandic) 



## RCVRN purified MaxPab rabbit polyclonal antibody (D01P) MaxPab®

Catalog # : H00005957-D01P

規格 : [ 100 ug ]

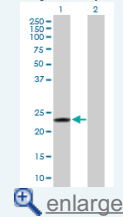
[List All](#)


### Specification

<b>Product Description:</b>	Rabbit polyclonal antibody raised against a full-length human RCVRN protein.
<b>Immunogen:</b>	RCVRN (NP_002894.1, 1 a.a. ~ 200 a.a) full-length human protein.
<b>Sequence:</b>	MGNSKSGALSKEILEELQLNTKFSEELCSWYQSFLKDCPTGRITQQQF QSIYAKFFPDTDPKAYAQHVFERSFDSNLDGTLDFKEYVIALHMTTAGKTN QKLEWAFSLYDVDGNGTISKNEVLEIVMAIFKMITPEDVKLLPDDENTPEK RAEKIWKYFGKNDDDKLTEKEFIEGTLANKEILRLIQFEPQKVKEKMKNA
<b>Host:</b>	Rabbit
<b>Reactivity:</b>	Human
<b>Quality Control Testing:</b>	Antibody reactive against mammalian transfected lysate.
<b>Storage Buffer:</b>	In 1x PBS, pH 7.4
<b>Storage Instruction:</b>	Store at -20°C or lower. Aliquot to avoid repeated freezing and thawing.
<b>MSDS:</b>	 <a href="#">Download</a>
<b>Datasheet:</b>	 <a href="#">Download</a>

### Application Image

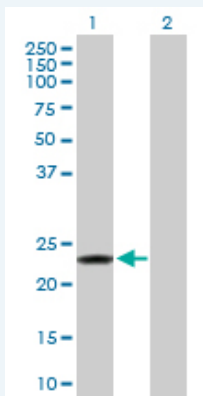
Western Blot (Transfected lysate)



 [enlarge](#)

### Applications

#### Western Blot (Transfected lysate)



Western Blot analysis of RCVRN expression in transfected 293T cell line ([H00005957-T01](#)) by RCVRN MaxPab polyclonal antibody.

Lane 1: RCVRN transfected lysate(23.10 KDa).  
Lane 2: Non-transfected lysate.

 [Protocol Download](#)

### Gene Information

Entrez GeneID: [5957](#)

GeneBank Accession#: [NM\\_002903.2](#)

Protein Accession#: [NP\\_002894.1](#)

Gene Name: RCVRN

Gene Alias: RCV1

Gene Description: recoverin

Omim ID: [179618](#)

Gene Ontology: [Hyperlink](#)

**Gene Summary:** This gene encodes a member of the recoverin family of neuronal calcium sensors. The encoded protein contains three calcium-binding EF-hand domains and may prolong the termination of the phototransduction cascade in the retina by blocking the phosphorylation of photo-activated rhodopsin. Recoverin may be the antigen responsible for cancer-associated retinopathy. [provided by RefSeq]

**Other Designations:** cancer associated retinopathy antigen

[服務條款](#) | [隱私權政策](#) | [著作及商標](#) | [網站地圖](#)

©2016 亞諾法生技股份有限公司 Abnova Corporation. 版權所有.