



# SZABO SCANDIC

Part of Europa Biosite

## Produktinformation



Forschungsprodukte & Biochemikalien



Zellkultur & Verbrauchsmaterial



Diagnostik & molekulare Diagnostik



Laborgeräte & Service

Weitere Information auf den folgenden Seiten!  
See the following pages for more information!



### Lieferung & Zahlungsart

siehe unsere [Liefer- und Versandbedingungen](#)

### Zuschläge

- Mindermengenzuschlag
- Trockeneiszuschlag
- Gefahrgutzuschlag
- Expressversand

### SZABO-SCANDIC HandelsgmbH

Quellenstraße 110, A-1100 Wien

T. +43(0)1 489 3961-0

F. +43(0)1 489 3961-7

[mail@szabo-scandic.com](mailto:mail@szabo-scandic.com)

[www.szabo-scandic.com](http://www.szabo-scandic.com)

[linkedin.com/company/szaboscandic](https://www.linkedin.com/company/szaboscandic) 



**PRPH2 purified MaxPab mouse polyclonal antibody (B01P)** MaxPab®

Catalog # : H00005961-B01P

規格 : [ 50 ug ]

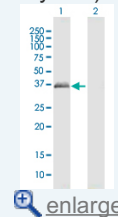
[List All](#)


**Specification**

<b>Product Description:</b>	Mouse polyclonal antibody raised against a full-length human PRPH2 protein.
<b>Immunogen:</b>	PRPH2 (AAH74720.1, 1 a.a. ~ 346 a.a) full-length human protein.
<b>Sequence:</b>	MALLKVKFDQKKRVKLAQGLWLMNWFVSLAGIIIFSLGLFLKIGLRKRSD VMNNSSEHFVPSNLIGMGVLSVFNLSLAGKICYDALDPAKYARWKPWLK PYLAICVLFNIIFLVALCCFLLRGSLENTLGQGLKNGMKYYRDTDTPGRC FMKKTIDMLQIEFKCCGNNGFRDWFIEIQWISNRYLDFSSKEVKDRIKSNV DGRYLVDGVPFSCCNPSSPRPCIQYQITNNSAHYSYDHQTEELNLWVRG CRAALLSYSSLMNSMGVWTLIWLFEVTITIGLRYLQTSLDGVSNPPEESE SESEGWLLEKSVPETWKAFLESVKKLGKGNQVEAEGAGAGQAPEAG
<b>Host:</b>	Mouse
<b>Reactivity:</b>	Human
<b>Quality Control Testing:</b>	Antibody reactive against mammalian transfected lysate.
<b>Storage Buffer:</b>	In 1x PBS, pH 7.4
<b>Storage Instruction:</b>	Store at -20°C or lower. Aliquot to avoid repeated freezing and thawing.
<b>MSDS:</b>	 <a href="#">Download</a>
<b>Datasheet:</b>	 <a href="#">Download</a>

**Application Image**

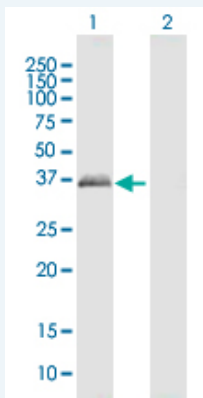
Western Blot (Transfected lysate)



 [enlarge](#)


**Applications**

**Western Blot (Transfected lysate)**



Western Blot analysis of PRPH2 expression in transfected 293T cell line (H00005961-T01) by PRPH2 MaxPab polyclonal antibody.

Lane 1: PRPH2 transfected lysate(39.10 KDa).  
Lane 2: Non-transfected lysate.

 [Protocol Download](#)

## Gene Information

---

**Entrez GeneID:** [5961](#)

---

**GeneBank  
Accession#:** [BC074720.2](#)

---

**Protein  
Accession#:** [AAH74720.1](#)

---

**Gene Name:** PRPH2

---

**Gene Alias:** AOFMD,AVMD,PRPH,RDS,RP7,TSPAN22,rd2

---

**Gene  
Description:** peripherin 2 (retinal degeneration, slow)

---

**Omim ID:** [136880](#), [169150](#), [179605](#), [608133](#), [608161](#)

---

**Gene Ontology:** [Hyperlink](#)

---

**Gene Summary:** The protein encoded by this gene is a member of the transmembrane 4 superfamily, also known as the tetraspanin family. Most of these members are cell-surface proteins that are characterized by the presence of four hydrophobic domains. The proteins mediate signal transduction events that play a role in the regulation of cell development, activation, growth and motility. This encoded protein is a cell surface glycoprotein found in the outer segment of both rod and cone photoreceptor cells. It may function as an adhesion molecule involved in stabilization and compaction of outer segment disks or in the maintenance of the curvature of the rim. This protein is essential for disk morphogenesis. Defects in this gene are associated with both central and peripheral retinal degenerations. Some of the various phenotypically different disorders are autosomal dominant retinitis pigmentosa, progressive macular degeneration, macular dystrophy and retinitis pigmentosa digenic. [provided by RefSeq]

---

**Other  
Designations:** OTTHUMP00000016404,peripherin 2,peripherin 2, homolog of mouse,peripherin, photoreceptor type,retinal peripherin,tetraspanin-22

---

## Gene Pathway

---

[Amyotrophic lateral sclerosis \(ALS\)](#)

## Related Disease

---

[Macular Degeneration](#) [Retinal Degeneration](#) [Retinal Diseases](#) [Retinitis Pigmentosa](#)