



SZABO SCANDIC

Part of Europa Biosite

Produktinformation



Forschungsprodukte & Biochemikalien



Zellkultur & Verbrauchsmaterial



Diagnostik & molekulare Diagnostik



Laborgeräte & Service

Weitere Information auf den folgenden Seiten!
See the following pages for more information!



Lieferung & Zahlungsart

siehe unsere [Liefer- und Versandbedingungen](#)

Zuschläge

- Mindermengenzuschlag
- Trockeneiszuschlag
- Gefahrgutzuschlag
- Expressversand

SZABO-SCANDIC HandelsgmbH

Quellenstraße 110, A-1100 Wien

T. +43(0)1 489 3961-0

F. +43(0)1 489 3961-7

mail@szabo-scandic.com

www.szabo-scandic.com

[linkedin.com/company/szaboscandic](https://www.linkedin.com/company/szaboscandic)

RDX monoclonal antibody (M03), clone 1F6

Catalog # : H00005962-M03

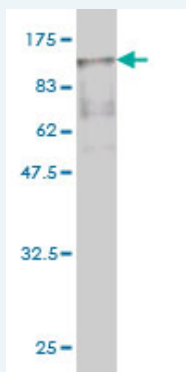
規格 : [100 ug]

[List All](#)

Specification

| | |
|-----------------------------|---|
| Product Description: | Mouse monoclonal antibody raised against a full length recombinant RDX. |
| Immunogen: | RDX (AAH47109, 1 a.a. ~ 583 a.a) full-length recombinant protein with GST tag. MW of the GST tag alone is 26 KDa. |
| Sequence: | MPKPINRVTTMDAELEFAIQPNTTGKQLFDQVWKTVGLREVWFFGLQYVDSKGYSTWLKLNKKVTQQDVKKENPLQFKFRAKFFPEDVSEELIQEITQRLFFLQVKEAILNDEIYCPPETA VLLASYAVQAKYGDYNKEIHKPGYLANDRLLPQRVLEQHKLTKEQWEERIQNWHEEHRGMLREDSMMEYLKIAQDLEMYGVNYFEIKNKKGT ELWLGVDALGLNIYEHDDKLT PKIGFPWSEIRNISFNDKKFVIKPIDKKAPDFVFYAPRLRINKRILALCMGNHEL YMRRRKPDITIEVQQMKAQAREEKHQKQLERAQLENEKEKREIAEKEKERIEREKEELMERLKQIEEQTIKAQKELEEQTRKALELDQERKRAKEEAERLEKERRAAEEAKSAIAKQAADQMKNQEQLAELAEFTAKIALLEEAKKKKEEEATEWQHKAFAAQEDLEKTKEELKT VMSAPPPPPPPVPIPTENEHDEHDENNAEASAELELSNEGVMNHRSEEEERV TETQKNERVKKQLQALSSELAQARDET KKTQNDVLHAENVKAGRDKYKTLRQIRQGNTKQRIDEFEAM |
| Host: | Mouse |
| Reactivity: | Human |
| Isotype: | IgG1 Kappa |

Quality Control Testing: Antibody Reactive Against Recombinant Protein.



Western Blot detection against Immunogen (89.87 KDa) .

Storage Buffer: In 1x PBS, pH 7.4

Storage Instruction: Store at -20°C or lower. Aliquot to avoid repeated freezing and thawing.

MSDS: [Download](#)

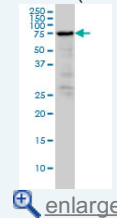
Datasheet: [Download](#)

Applications

Western Blot (Cell lysate)

Application Image

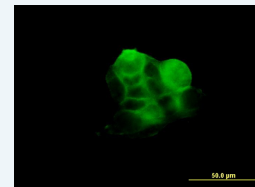
Western Blot (Cell lysate)



[enlarge](#)

Western Blot (Recombinant protein)

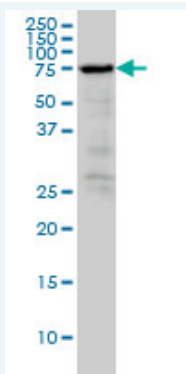
Immunofluorescence



[enlarge](#)

Sandwich ELISA (Recombinant protein)

ELISA



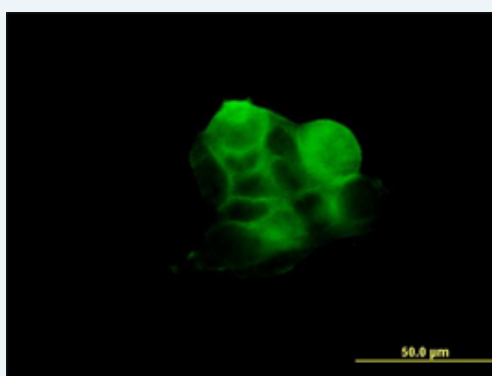
RDX monoclonal antibody (M03), clone 1F6 Western Blot analysis of RDX expression in A-431 (Cat # L015V1).

 [Protocol Download](#)

Western Blot (Recombinant protein)


 [Protocol Download](#)

Immunofluorescence




 [enlarge this image](#)

Immunofluorescence of monoclonal antibody to RDX on A-431 cell. [antibody concentration 10 ug/ml]

 [Protocol Download](#)

Sandwich ELISA (Recombinant protein)

Detection limit for recombinant GST tagged RDX is approximately 30ng/ml as a capture antibody.

 [Protocol Download](#)

ELISA

Gene Information

Entrez GeneID: [5962](#)

GeneBank [BC047109](#)

Accession#:

Protein [AAH47109](#)

Accession#:

Gene Name: RDX

Gene Alias: DFNB24

Gene radixin

Description:

Omim ID: [179410](#), [611022](#)

Gene Ontology: [Hyperlink](#)

Gene Summary: Radixin is a cytoskeletal protein that may be important in linking actin to

the plasma membrane. It is highly similar in sequence to both ezrin and moesin. The radixin gene has been localized by fluorescence in situ hybridization to 11q23. A truncated version representing a pseudogene (RDXP2) was assigned to Xp21.3. Another pseudogene that seemed to lack introns (RDXP1) was mapped to 11p by Southern and PCR analyses. [provided by RefSeq]

Other Designations: -

Gene Pathway

Regulation of actin cytoskeleton

Related Disease

Genetic Predisposition to Disease Glaucoma, Open-Angle

[服務條款](#) | [隱私權政策](#) | [著作及商標](#) | [網站地圖](#)

©2016 亞諾法生技股份有限公司 Abnova Corporation. 版權所有.