



# SZABO SCANDIC

Part of Europa Biosite

## Produktinformation



Forschungsprodukte & Biochemikalien



Zellkultur & Verbrauchsmaterial



Diagnostik & molekulare Diagnostik



Laborgeräte & Service

Weitere Information auf den folgenden Seiten!  
See the following pages for more information!



### Lieferung & Zahlungsart

siehe unsere [Liefer- und Versandbedingungen](#)

### Zuschläge

- Mindermengenzuschlag
- Trockeneiszuschlag
- Gefahrgutzuschlag
- Expressversand

### SZABO-SCANDIC HandelsgmbH

Quellenstraße 110, A-1100 Wien

T. +43(0)1 489 3961-0

F. +43(0)1 489 3961-7

[mail@szabo-scandic.com](mailto:mail@szabo-scandic.com)

[www.szabo-scandic.com](http://www.szabo-scandic.com)

[linkedin.com/company/szaboscandic](https://www.linkedin.com/company/szaboscandic) 

## RDX monoclonal antibody (M04), clone 2E7

Catalog # : H00005962-M04

規格 : [ 100 ug ]

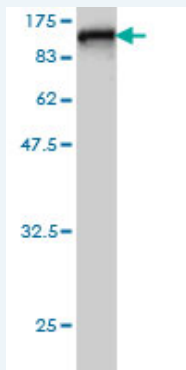
[List All](#)

### Specification

<b>Product Description:</b>	Mouse monoclonal antibody raised against a full length recombinant RDX.
<b>Immunogen:</b>	RDX (AAH47109, 1 a.a. ~ 583 a.a) full-length recombinant protein with GST tag. MW of the GST tag alone is 26 KDa.
<b>Sequence:</b>	MPKPINVRVTTMDAELEFAIQPNTTGKQLFDQVWKTVGLREVWFFGLQY VDSKGYSTWLKLNKKVTQQDVKKENPLQFKFRAKFFPEDVSEELIQEITQ RLFFLQVKEAILNDEIYCPPETAVLLASYAVQAKYGDYNKEIHKPGYLAND RLLPQRVLEQHKLTKQWEERIQNWHEEHRGMLREDSMMEYLKIAQDL EMYGVNYFEIKNKKGTTELWLGVDALGLNIYEHDDKLT PKIGFPWSEIRNIS FNDKKFVIKPIDKKAPDFVFYAPRLRINKRILALCMGNHEL YMRRRKPD TIE VQQMKAQAREEKHQKQLERAQLENEKEKREIAEKEKERIEREKEELMER LKQIEEQTIKAQKELEEQTRKALELDQERKRAKEEAERLEKERRAAEEAK SAIAKQAADQMKNQEQLAAELAEFTAKIALLEEAKKKKEEEATEWQHKA AAQEDLEKTKEELKT VMSAPPPPPPPVIPPTENEHDEHDENNAEASAE L SNEGVMNHRSEEEERV TETQKNERVKKQLQALSSELAQARDET KKTQND VLHAENVKAGRDYKTLRQIRQGNTKQRIDEFEAM
<b>Host:</b>	Mouse
<b>Reactivity:</b>	Human
<b>Isotype:</b>	IgG2a Kappa

**Quality Control** Antibody Reactive Against Recombinant Protein.

**Testing:**



Western Blot detection against Immunogen (89.87 KDa) .

**Storage Buffer:** In 1x PBS, pH 7.4

**Storage Instruction:** Store at -20°C or lower. Aliquot to avoid repeated freezing and thawing.

**MSDS:** [Download](#)

**Datasheet:** [Download](#)

### Applications

Western Blot (Recombinant protein)

### Application Image

Western Blot (Recombinant protein)  
Sandwich ELISA (Recombinant protein)  
ELISA

 [Protocol Download](#)

### Sandwich ELISA (Recombinant protein)

Detection limit for recombinant GST tagged RDX is approximately 30ng/ml as a capture antibody.

 [Protocol Download](#)

## ELISA

### Gene Information

Entrez GeneID: [5962](#)

GeneBank  
Accession#: [BC047109](#)

Protein  
Accession#: [AAH47109](#)

Gene Name: RDX

Gene Alias: DFNB24

Gene  
Description: radixin

Omim ID: [179410](#), [611022](#)

Gene Ontology: [Hyperlink](#)

**Gene Summary:** Radixin is a cytoskeletal protein that may be important in linking actin to the plasma membrane. It is highly similar in sequence to both ezrin and moesin. The radixin gene has been localized by fluorescence in situ hybridization to 11q23. A truncated version representing a pseudogene (RDXP2) was assigned to Xp21.3. Another pseudogene that seemed to lack introns (RDXP1) was mapped to 11p by Southern and PCR analyses. [provided by RefSeq]

Other  
Designations: -

### Gene Pathway

[Regulation of actin cytoskeleton](#)

### Related Disease

[Genetic Predisposition to Disease Glaucoma, Open-Angle](#)

[服務條款](#) | [隱私權政策](#) | [著作及商標](#) | [網站地圖](#)

©2016 亞諾法生技股份有限公司 Abnova Corporation. 版權所有.