



SZABO SCANDIC

Part of Europa Biosite

Produktinformation



Forschungsprodukte & Biochemikalien



Zellkultur & Verbrauchsmaterial



Diagnostik & molekulare Diagnostik



Laborgeräte & Service

Weitere Information auf den folgenden Seiten!
See the following pages for more information!



Lieferung & Zahlungsart

siehe unsere [Liefer- und Versandbedingungen](#)

Zuschläge

- Mindermengenzuschlag
- Trockeneiszuschlag
- Gefahrgutzuschlag
- Expressversand

SZABO-SCANDIC HandelsgmbH

Quellenstraße 110, A-1100 Wien

T. +43(0)1 489 3961-0

F. +43(0)1 489 3961-7

mail@szabo-scandic.com

www.szabo-scandic.com

[linkedin.com/company/szaboscandic](https://www.linkedin.com/company/szaboscandic) 

RDX monoclonal antibody (M06), clone 1D9

Catalog # : H00005962-M06

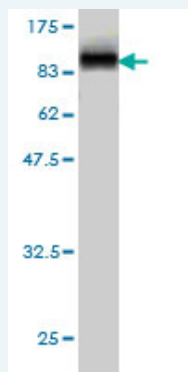
規格 : [100 ug]

[List All](#)

Specification

Product Description:	Mouse monoclonal antibody raised against a full length recombinant RDX.
Immunogen:	RDX (AAH47109, 1 a.a. ~ 583 a.a) full-length recombinant protein with GST tag. MW of the GST tag alone is 26 KDa.
Sequence:	MPKPINRVTTMDAELEFAIQPNTTGKQLFDQVVKTVGLREVWFFGLQYVDSKGYSTWLKLNKKVTQQDVKKENPLQFKFRAKFFPEDVSEELIQEITQRLFFLQVKEAILNDEIYCPPETAVLLASYAVQAKYGDYNKEIHKPGYLANDRLLPQRVLEQHKLTKQEWEERIQNWHEEHRGMLREDSMMEYLKIAQDLEMYGVNYFEIKNKKGTLELWLGVDALGLNIYEHDDKLT PKIGFPWSEIRNISFNDKKFVIKPIDKKAPDFV FYAPRLRINKRILALCMGNHEL YMRRRKPDIEVQQMKAQAREEKHQKQLERAQLENEKEKREIAEKEKERIEREKEELMERLKQIEEQTIKAQKELEEQTRKALELDQERKRAKEEAERLEKERRAAEEAKSAIAKQAADQMKNQEQLAELA EFTAKIALLEEAKKKKEEEATEWQHKAFAAQEDLEKTKEELKT VMSAPPPPPPPVIPPTENEHDEHDENNAEASAE LSNEGVMNHRSEEEERV TETQKNERVKKQLQALSSELAQARDET KKTQNDVLHAENVKAGRDKYKTLRQIRQGNTKQRIDEFEAM
Host:	Mouse
Reactivity:	Human
Isotype:	IgG2a Kappa

Quality Control Testing: Antibody Reactive Against Recombinant Protein.



Western Blot detection against Immunogen (89.87 KDa) .

Storage Buffer: In 1x PBS, pH 7.4

Storage Instruction: Store at -20°C or lower. Aliquot to avoid repeated freezing and thawing.

MSDS: [Download](#)

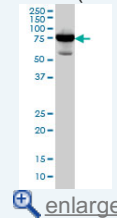
Datasheet: [Download](#)

Publication Reference

1. [Radixin inhibition decreases adult neural progenitor cell migration and proliferation in vitro and in vivo.](#)

Application Image

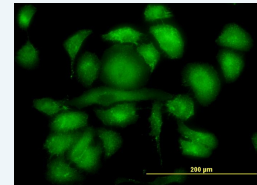
Western Blot (Cell lysate)



[enlarge](#)

Western Blot (Recombinant protein)

Immunofluorescence



[enlarge](#)

Sandwich ELISA (Recombinant protein)

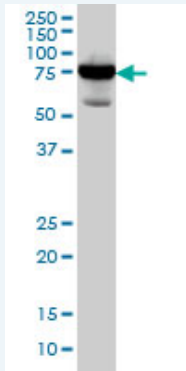
ELISA

Persson A, Lindberg OR, Kuhn HG. *Front Cell Neurosci.* 2013 Sep 24;7:161. doi: 10.3389/fncel.2013.00161. eCollection 2013.


2. [Radixin expression in microglia after cortical stroke lesion.](#)
Persson A, Osman A, Bolouri H, Mallard C, Kuhn HG. *Glia.* 2013 Feb 26. doi: 10.1002/glia.22473.
3. [Molecular architecture of the chick vestibular hair bundle.](#)
Shin JB, Krey JF, Hassan A, Metlagel Z, Tauscher AN, Pagana JM, Sherman NE, Jeffery ED, Spinelli KJ, Zhao H, Wilmarth PA, Choi D, David LL, Auer M, Barr-Gillespie PG. *Nat Neurosci.* 2013 Jan 20. doi: 10.1038/nn.3312.
4. [Large membrane domains in hair bundles specify spatially constricted radixin activation.](#)
Zhao H, Williams DE, Shin JB, Brugger B, Gillespie PG. *J Neurosci.* 2012 Mar 28;32(13):4600-9.

Applications

Western Blot (Cell lysate)



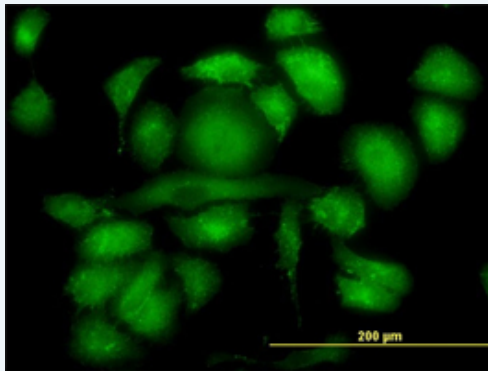
RDX monoclonal antibody (M06), clone 1D9 Western Blot analysis of RDX expression in HeLa (Cat # L013V1).


 [Protocol Download](#)

Western Blot (Recombinant protein)

 [Protocol Download](#)

Immunofluorescence



 [enlarge this image](#)

Immunofluorescence of monoclonal antibody to RDX on HeLa cell. [antibody concentration 30 ug/ml]

 [Protocol Download](#)

Sandwich ELISA (Recombinant protein)

Detection limit for recombinant GST tagged RDX is approximately 30ng/ml as a capture antibody.

 [Protocol Download](#)

ELISA

Gene Information

Entrez GeneID: [5962](#)

GeneBank [BC047109](#)

Accession#:

Protein [AAH47109](#)

Accession#:

Gene Name: RDX

Gene Alias: DFNB24

Gene radixin

Description:

Omim ID: [179410, 611022](#)

Gene Ontology: [Hyperlink](#)

Gene Summary: Radixin is a cytoskeletal protein that may be important in linking actin to the plasma membrane. It is highly similar in sequence to both ezrin and moesin. The radixin gene has been localized by fluorescence in situ hybridization to 11q23. A truncated version representing a pseudogene (RDXP2) was assigned to Xp21.3. Another pseudogene that seemed to lack introns (RDXP1) was mapped to 11p by Southern and PCR analyses. [provided by RefSeq]

Other Designations: -

Gene Pathway

[Regulation of actin cytoskeleton](#)

Related Disease

[Genetic Predisposition to Disease](#) [Glaucoma, Open-Angle](#)