



SZABO SCANDIC

Part of Europa Biosite

Produktinformation



Forschungsprodukte & Biochemikalien



Zellkultur & Verbrauchsmaterial



Diagnostik & molekulare Diagnostik



Laborgeräte & Service

Weitere Information auf den folgenden Seiten!
See the following pages for more information!



Lieferung & Zahlungsart

siehe unsere [Liefer- und Versandbedingungen](#)

Zuschläge

- Mindermengenzuschlag
- Trockeneiszuschlag
- Gefahrgutzuschlag
- Expressversand

SZABO-SCANDIC HandelsgmbH

Quellenstraße 110, A-1100 Wien

T. +43(0)1 489 3961-0

F. +43(0)1 489 3961-7

mail@szabo-scandic.com

www.szabo-scandic.com

[linkedin.com/company/szaboscandic](https://www.linkedin.com/company/szaboscandic) 

RECQL MaxPab mouse polyclonal antibody (B01) MaxPab®

Catalog # : H00005965-B01

規格 : [50 uL]

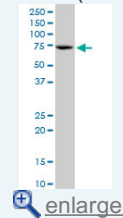
[List All](#)

Specification

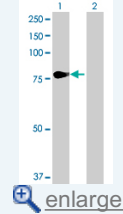
Product Description:	Mouse polyclonal antibody raised against a full-length human RECQL protein.
Immunogen:	RECQL (NP_002898.2, 1 a.a. ~ 649 a.a) full-length human protein.
Sequence:	MASVSALTEELDSITSELHAVEIQIQELTERQQELIQKKKVLTKKIKQCLEDSDAGASNEYDSSPAAWNKEDFPWSGKVKDILQNVFKLEKFRPLQLETINVTMAGKEVFLVMPTGGGKSLCYQLPALCSDGFTLVICPLISLMEDQLMLVKQLGISATMLNASSSKEHVKWWHAEMVNKNSSELKIYVTPEKIAKSKMFM SRLEKAYEARRFTRIAVDEVHCCSQWGHDFRPDYKALGILKRQFPNASLIGLTATATNHVLTDAQKILCIEKCFFTASFNRPNLYEVRQKPSNTEDFIEDIVKLINGRYKGGQSGIYCFQSKDSEQVTVSLQNLGIHAGAYHANLEPEDKTTVHRKWSANEIQVVVATVAFGMGIDKPDVRFVIHHSMSKSMENYYQESGRAGRDDMKADCILYYGFDIFRISSMVVMENVGQKLYEMVSYCQNISKRRVLMQHFDEVWNSEACNKMCDNCKDSAFERKNITEYCRDLIKILKQAEELNEKL TPLKLIDSWMGKAALRVAGVVAPTLPREDLEKIAHFLIQQYLKEDYSFTAYATISYLGKIPKANLLNNEAHAITMQVTKSTQNSFRAESSQTCHSEQGDKKMEEKNSGNFQKKAANMLQQSGSKNTGAKKRKIDDA
Host:	Mouse
Reactivity:	Human
Quality Control Testing:	Antibody reactive against mammalian transfected lysate.
Storage Buffer:	No additive
Storage Instruction:	Store at -20°C or lower. Aliquot to avoid repeated freezing and thawing.
Note:	For IHC and IF applications, antibody purification with Protein A will be needed prior to use.
MSDS:	Download
Datasheet:	Download

Application Image

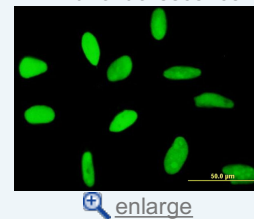
Western Blot (Cell lysate)



Western Blot (Transfected lysate)

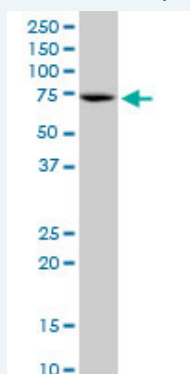


Immunofluorescence



Applications

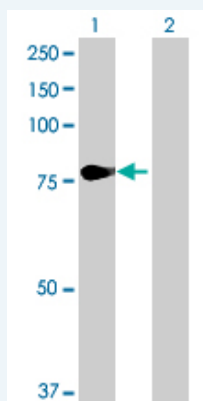
Western Blot (Cell lysate)



RECQL MaxPab polyclonal antibody. Western Blot analysis of RECQL expression in HeLa S3 NE.

 [Protocol Download](#)


Western Blot (Transfected lysate)



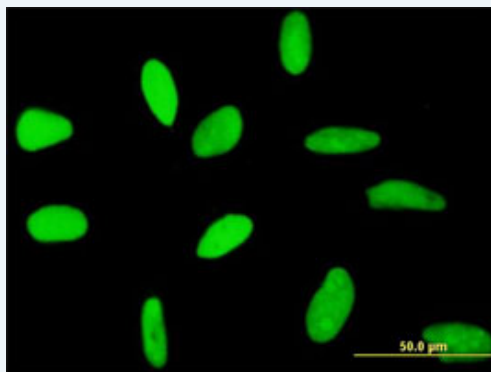
Western Blot analysis of RECQL expression in transfected 293T cell line ([H00005965-T01](#)) by RECQL MaxPab polyclonal antibody.


Lane 1: RECQL transfected lysate(71.39 KDa).

Lane 2: Non-transfected lysate.


 [Protocol Download](#)

Immunofluorescence



 [enlarge this image](#)

Immunofluorescence of [purified](#) MaxPab antibody to RECQL on HeLa cell. [antibody concentration 10 ug/ml]

 [Protocol Download](#)

Gene Information

Entrez GeneID: [5965](#)

GeneBank [NM_002907.2](#)

Accession#:

Protein [NP_002898.2](#)

Accession#:

Gene Name: RECQL

Gene Alias: RECQL1,RecQ1

Gene Description: RecQ protein-like (DNA helicase Q1-like)

Omim ID: [600537](#)

Gene Ontology: [Hyperlink](#)

Gene Summary: The protein encoded by this gene is a member of the RecQ DNA helicase family. DNA helicases are enzymes involved in various types of

DNA repair, including mismatch repair, nucleotide excision repair and direct repair. Some members of this family are associated with genetic disorders with predisposition to malignancy and chromosomal instability. The biological function of this helicase has not yet been determined. Two alternatively spliced transcripts, which encode the same isoform but differ in their 5' and 3' UTRs, have been described. [provided by RefSeq

Other Designations: ATP-dependent DNA helicase Q1, DNA helicase Q1-like, RecQ protein-like

Related Disease

[Ataxia telangiectasia](#) [Carcinoma, Pancreatic Ductal](#) [Colorectal Neoplasms](#)
[Pancreatic cancer](#) [Pancreatic Neoplasms](#)

[服務條款](#) | [隱私權政策](#) | [著作及商標](#) | [網站地圖](#)

©2016 亞諾法生技股份有限公司 Abnova Corporation. 版權所有.