



SZABO SCANDIC

Part of Europa Biosite

Produktinformation



Forschungsprodukte & Biochemikalien



Zellkultur & Verbrauchsmaterial



Diagnostik & molekulare Diagnostik



Laborgeräte & Service

Weitere Information auf den folgenden Seiten!
See the following pages for more information!



Lieferung & Zahlungsart

siehe unsere [Liefer- und Versandbedingungen](#)

Zuschläge

- Mindermengenzuschlag
- Trockeneiszuschlag
- Gefahrgutzuschlag
- Expressversand

SZABO-SCANDIC HandelsgmbH

Quellenstraße 110, A-1100 Wien

T. +43(0)1 489 3961-0

F. +43(0)1 489 3961-7

mail@szabo-scandic.com

www.szabo-scandic.com

[linkedin.com/company/szaboscandic](https://www.linkedin.com/company/szaboscandic) 

RECQL monoclonal antibody (M07), clone 4D5

Catalog # : H00005965-M07

規格 : [100 ug]

[List All](#)

Specification

Product Description:	Mouse monoclonal antibody raised against a partial recombinant RECQL.
Immunogen:	RECQL (NP_116559.1, 549 a.a. ~ 648 a.a) partial recombinant protein with GST tag. MW of the GST tag alone is 26 KDa.
Sequence:	FLIQYLKEDYSFTAYATISYLKIGPKANLLNNEAHAITMQVTKSTQNSFRA ESSQTCHSEQGDKKMEEKNSGNFQKKAANMLQQSGSKNTGAKKRKIDD
Host:	Mouse
Reactivity:	Human
Isotype:	IgG2a Kappa

Quality Control Testing: Antibody Reactive Against Recombinant Protein.



Western Blot detection against Immunogen (36.74 KDa) .

Storage Buffer: In 1x PBS, pH 7.4

Storage Instruction: Store at -20°C or lower. Aliquot to avoid repeated freezing and thawing.

MSDS: [Download](#)

Datasheet: [Download](#)

Applications

Western Blot (Recombinant protein)

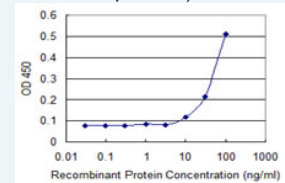
[Protocol Download](#)

Sandwich ELISA (Recombinant protein)

Application Image

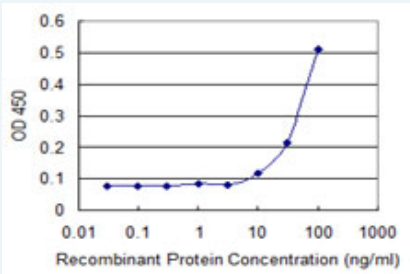
Western Blot (Recombinant protein)

Sandwich ELISA (Recombinant protein)



[enlarge](#)

ELISA



Detection limit for recombinant GST tagged RECQL is 3 ng/ml as a capture antibody.

 [Protocol Download](#)

ELISA

Gene Information

Entrez GeneID: [5965](#)

GeneBank [NM_032941](#)

Accession#:

Protein [NP_116559.1](#)

Accession#:

Gene Name: RECQL

Gene Alias: RECQL1,RecQ1

Gene Description: RecQ protein-like (DNA helicase Q1-like)

Omim ID: [600537](#)

Gene Ontology: [Hyperlink](#)

Gene Summary: The protein encoded by this gene is a member of the RecQ DNA helicase family. DNA helicases are enzymes involved in various types of DNA repair, including mismatch repair, nucleotide excision repair and direct repair. Some members of this family are associated with genetic disorders with predisposition to malignancy and chromosomal instability. The biological function of this helicase has not yet been determined. Two alternatively spliced transcripts, which encode the same isoform but differ in their 5' and 3' UTRs, have been described. [provided by RefSeq]

Other Designations: ATP-dependent DNA helicase Q1,DNA helicase Q1-like,RecQ protein-like

Related Disease

[Ataxia telangiectasia](#) [Carcinoma, Pancreatic Ductal](#) [Colorectal Neoplasms](#)
[Pancreatic cancer](#) [Pancreatic Neoplasms](#)