



# SZABO SCANDIC

Part of Europa Biosite

## Produktinformation



Forschungsprodukte & Biochemikalien



Zellkultur & Verbrauchsmaterial



Diagnostik & molekulare Diagnostik



Laborgeräte & Service

Weitere Information auf den folgenden Seiten!  
See the following pages for more information!



### Lieferung & Zahlungsart

siehe unsere [Liefer- und Versandbedingungen](#)

### Zuschläge

- Mindermengenzuschlag
- Trockeneiszuschlag
- Gefahrgutzuschlag
- Expressversand

### SZABO-SCANDIC HandelsgmbH

Quellenstraße 110, A-1100 Wien

T. +43(0)1 489 3961-0

F. +43(0)1 489 3961-7

[mail@szabo-scandic.com](mailto:mail@szabo-scandic.com)

[www.szabo-scandic.com](http://www.szabo-scandic.com)

[linkedin.com/company/szaboscandic](https://www.linkedin.com/company/szaboscandic) 



## REG1A monoclonal antibody (M02), clone 1G10

Catalog # : H00005967-M02

規格 : [ 100 ug ]

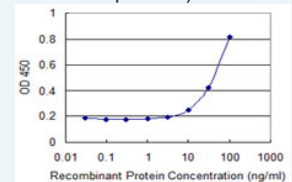
[List All](#)

### Specification

<b>Product Description:</b>	Mouse monoclonal antibody raised against a partial recombinant REG1A.
<b>Immunogen:</b>	REG1A (AAH05350, 67 a.a. ~ 166 a.a) partial recombinant protein with GST tag. MW of the GST tag alone is 26 KDa.
<b>Sequence:</b>	MNSGNLVSVLTAEGAFVASLIKESGTDFFNWWIGLHDPKKNRRWHWS SGSLVSYKSWGIGAPSSVNPGYCVSLTSSTGFQKWKDVPCEDKFSFVC KFKN
<b>Host:</b>	Mouse
<b>Reactivity:</b>	Human
<b>Isotype:</b>	IgG2b Kappa
<b>Quality Control Testing:</b>	Antibody Reactive Against Recombinant Protein.
<b>Storage Buffer:</b>	In 1x PBS, pH 7.4
<b>Storage Instruction:</b>	Store at -20°C or lower. Aliquot to avoid repeated freezing and thawing.
<b>MSDS:</b>	 <a href="#">Download</a>
<b>Datasheet:</b>	 <a href="#">Download</a>

### Application Image

Sandwich ELISA (Recombinant protein)

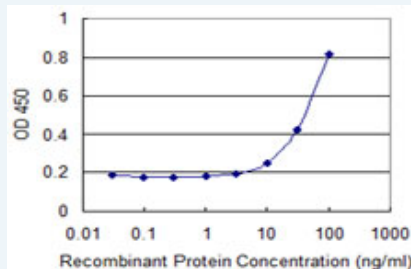


 [enlarge](#)

ELISA

### Applications

Sandwich ELISA (Recombinant protein)



Detection limit for recombinant GST tagged REG1A is 3 ng/ml as a capture antibody.

 [Protocol Download](#)

ELISA

### Gene Information

Entrez GeneID: [5967](#)

GeneBank Accession#: [BC005350](#)

**Protein Accession#:** [AAH05350](#)

**Gene Name:** REG1A

**Gene Alias:** ICRF,MGC12447,P19,PSP,PSPS,PSPS1,PTP,REG

**Gene Description:** regenerating islet-derived 1 alpha

**Omim ID:** [167770](#)

**Gene Ontology:** [Hyperlink](#)

**Gene Summary:** This gene is a type I subclass member of the Reg gene family. The Reg gene family is a multigene family grouped into four subclasses, types I, II, III and IV, based on the primary structures of the encoded proteins. This gene encodes a protein that is secreted by the exocrine pancreas. It is associated with islet cell regeneration and diabetogenesis and may be involved in pancreatic lithogenesis. Reg family members REG1B, REGL, PAP and this gene are tandemly clustered on chromosome 2p12 and may have arisen from the same ancestral gene by gene duplication. [provided by RefSeq]

**Other Designations:** OTTHUMP00000160485,islet cells regeneration factor,islet of langerhans regenerating protein,lithostathine 1 alpha,pancreatic stone protein, secretory,pancreatic thread protein,protein-X,regenerating islet-derived 1 alpha (pancreatic stone protein, pancrea

#### **Related Disease**

[Calcinosis](#) [Diabetes Mellitus, Type 1](#) [Diabetes Mellitus, Type 2](#) [Pancreatitis](#)  
[Tobacco Use Disorder](#)

[服務條款](#) | [隱私權政策](#) | [著作及商標](#) | [網站地圖](#)

©2016 亞諾法生技股份有限公司 Abnova Corporation. 版權所有.